

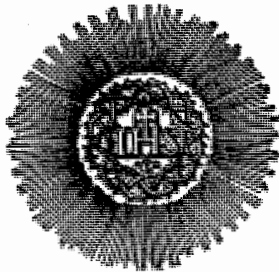
CATALOGUS PROVINCIAE

NEO AURELIANENSIS

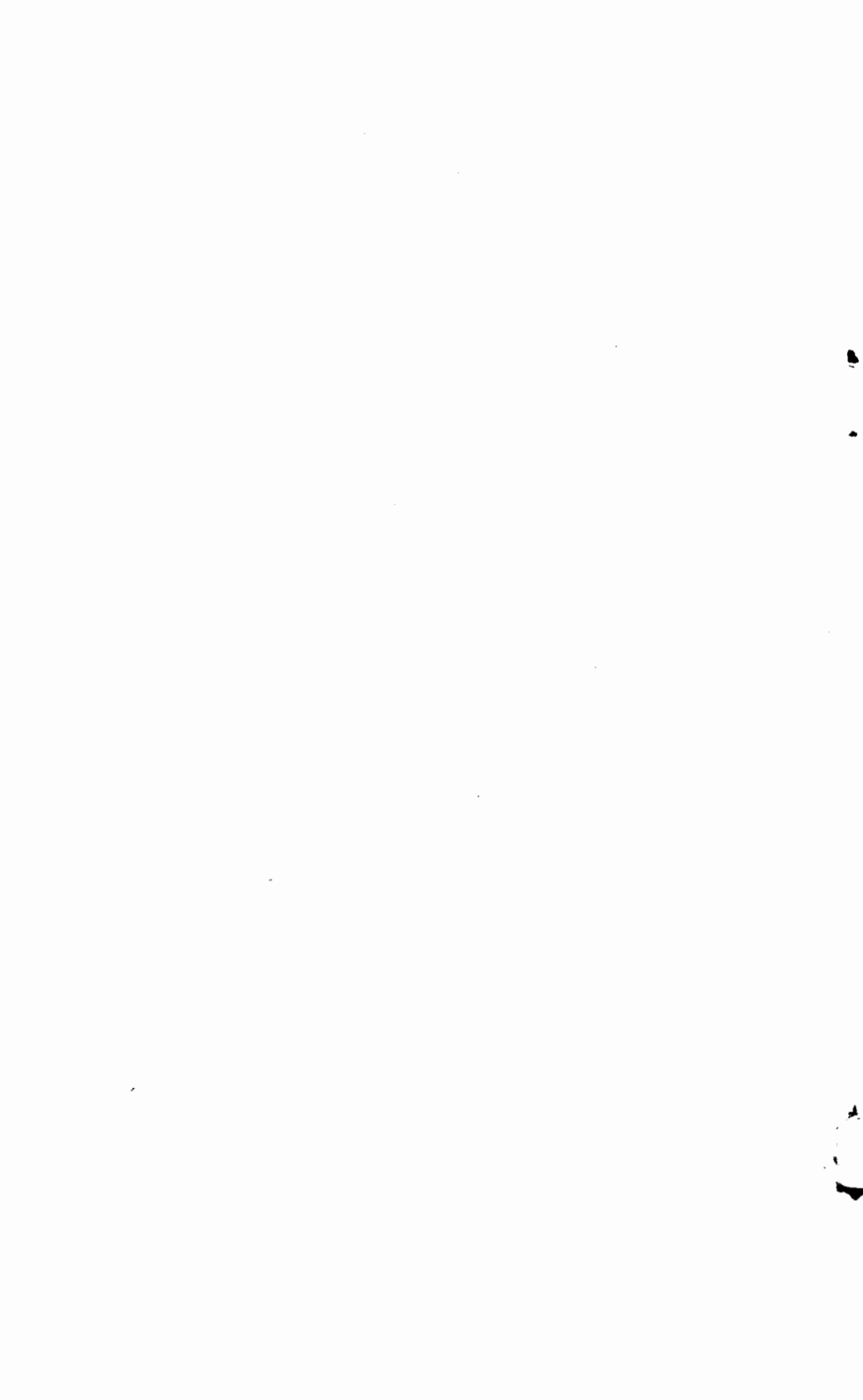
1916

SOCIETATIS JESU

INEUNTE ANNO 1916



PRESS OF
PERRY & BUCKLEY COMPANY
NEW ORLEANS, LA.



R. P.

MICHAEL MOYNIHAN

PRAEPOSITUS PROVINCIALIS

A DIE 5 JUNII 1911

(140 Baronne Street, New Orleans, La.)

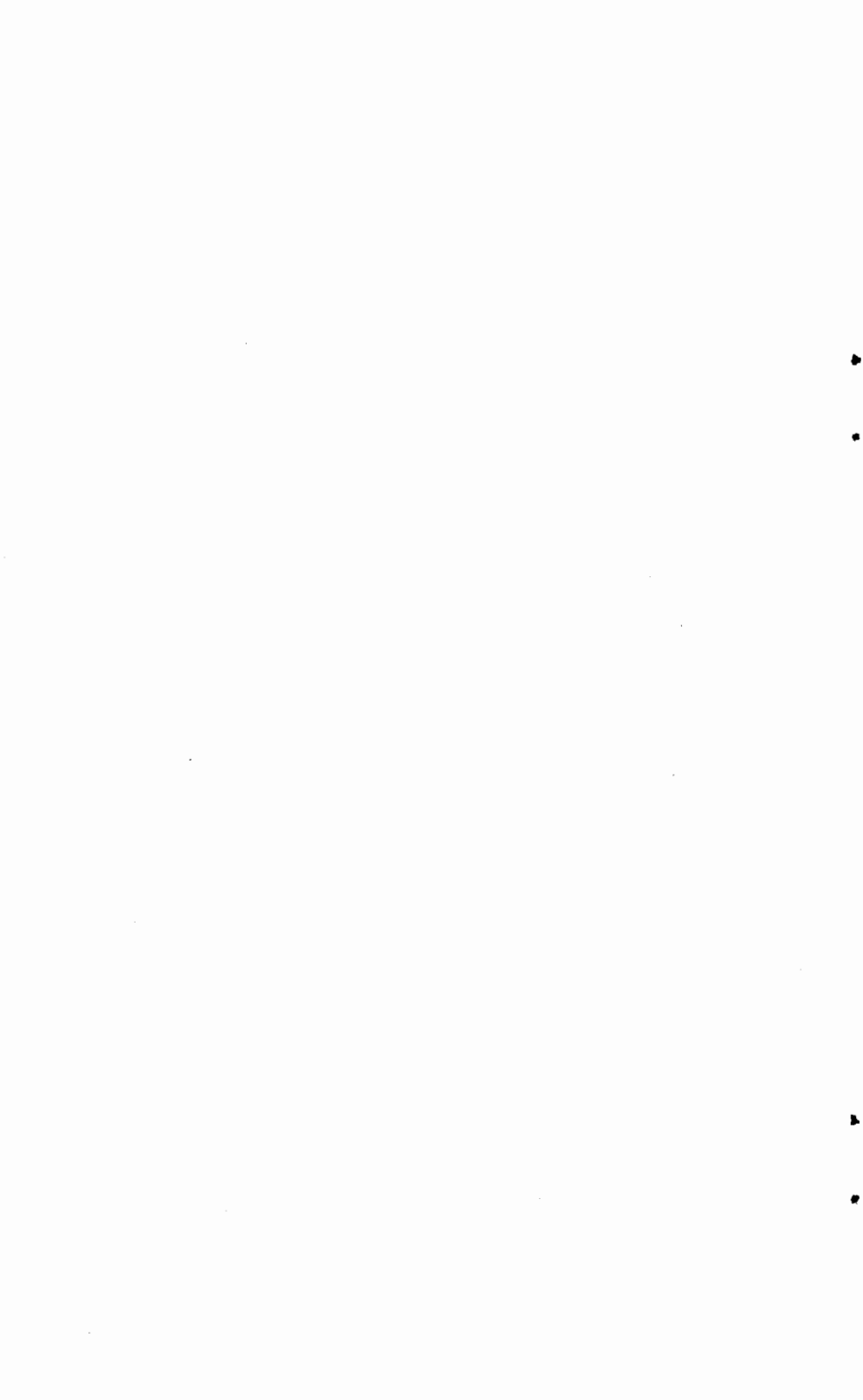
 (Pro teleg. transmar.—PROVINCIAL, NEW ORLEANS)

P. Jacobus De Potter—*Soc. a die 15 Aug. 1907, Cons. Prov., Adm.*
 Ferdinandus Peter—*Soc. Coadj., Aedit. et Manud. fam. in Coll.*

CONSULTORES PROVINCIAE

P. Jacobus De Potter—*Soc. R. P. Prov..... a die 15 Aug. 1907*
 P. Joannes D. Foulkes—*Rect. Coll. Neo Aurel. Imm. Concept.....*
 *a die 7 Sep. 1911*
 P. Alphonsus E. Otis—*Rect. Coll. Neo Aurel. Loyol.....*
 *a die 2 Apr. 1913*
 P. Eduardus Cummings—*Rect. Coll. Springhill.... a die 2 Apr. 1913*

P. Nicolaus Davis—*Proc. Prov., 140 Baronne St., New Orleans, La.,*
pag. 19.



Collegium Augustanum

SS. CORDIS JESU

(College of the Sacred Heart, 1306 Ellis St., Augusta, Ga.)

- P. Joannes Salter—*Rect. a die 30 Jul. 1913, Praef. stud., Praes. soc. SS. Nom., Conf. et conc. in t., Exam. candid. NN.*
- P. Linus Schuler—*Min., Proc., Praef. eccl. et val., Praef. spir. et conf. alumn., Conf. et conc. in t., Praes. sod. B. M. V. Imm. Concept. et S. Stan., sod. S. Joan. Berchm., soc. apost. orat. pro alumn., confr. S. Vinc. et soc. matr. benev., Cur. ger. schol. paroch., Cat. in t., Doc. ling. germ., Cons. an. 5.*
- P. Bortell, Thomas H.—*Doc. rud. et ling. gall., Mod. acad. jun., Conc. in t., Praef. bibl. alumn., aul. paen. et mor., An. 8 mag.*
- P. Lonergan, Jacobus—*Praef. spir., Adm., Oper., Conf. NN., FF. schol. christ., alumn. et in t., Cat. priv.*
- P. McLaughlin, Alexius C.—*Oper., Exhort. NN., Praes. sod. B. M. V. Imm. Concept. et S. Jos., congr. bon. mort. et soc. apost. orat., Conf. NN., alumn. et in t., Conc. in t., Expl. med. et cat. FF., Cat. priv. et in t., Collab. libell. period. AMERICA, Exam. candid. NN., Cons. an. 1.*
- P. Stritch, Thomas—*Doc. sup. gram., Adj. proc., Conf. NN., Conc. in t., Praes. coll. cas. consc., Praef. mor., Exam. candid. NN., Cons. an. 3, An. 16 mag.*
- P. Walsh, Michael—*Doc. med. et inf. gram., Mod. acad. sen., Conf. et conc. in t., Coll. pp. litt. an. et scrib. hist. dom., Praef. lect. ad mens., bibl. et mor., Collab. libell. period. AMERICA, Exam. candid. NN., Cons. an. 4, An. 10 mag.*

COADJUTORES

Broderick, Jacobus—*Jan., Infirm., Cust. tricl. et cul., Vis. exam., mat. et noct., Ad dom.*

Locher, Wendelinus—*Aedit., Disp., Cust. vest., Cur. fornac., Excit., Hortul., Vis. med., Ad dom.*

Sac. 7—Coadj. 2—Univ. 9.

Collegium Galvestonense

S. MARIAE

(University of St. Mary, 14th and Ave. I, Galveston, Tex.)

- P. Augustinus E. Fields—*V. Rect. a die 25 Mai. 1913, Praef. stud., Praes. soc. SS. Nom., Conf. et conc. in t., Exam. candid. NN.*
- P. Amatus Snebelen—*Min., Proc., Praef. eccl. et val., Praef. spir. et conf. alumn., Praes. sod. B. M. V. Imm. Concept. et S. Alois., soc. apost. orat. pro alumn. et soc. matr. alt., Conc. in t., Doc. phys. et chym. elem., et ling. germ., Cons. an. 8.*
- P. Cronin, Patritius—*Doc. rud. B et ling. gall., Conc. in t., Praef. bibl. et mor., An. 5 mag.*
- P. DeBeurme, Theophilus—*Doc. rud. A et ling. hisp., Conf. et conc. in t., An. 17 mag.*
- P. Foulkes, David—*Doc. inf. gram., Adj. proc., Conc. in t., Expl. med. et cat. FF., Praef. mor., Collab. libel. period. AMERICA, An. 9 mag.*
- P. Gaffney, Eduardus—*Oper., Cur. ger. nosoc., Conf. NN., alumn. et in t., Conc. in t., Praes. sod. B. M. V. Imm. Concept. et S. Agnet., Cat. priv. et in t., Cur. ger. schol. paroch., Exam. candid. NN., Cons. an. 2.*
- P. Guyol, Amadeus—*Praef. spir. et exhort. NN., Adm., Oper., Conf. NN., alumn. et in t., Praes. sod. B. M. V. Imm. Concept. et S. Stan., B. M. V. Imm. Concept. et S. Jos., congr. bon. mort. et soc. apost. orat., Cat. priv. et in t.*
- P. Heredia, Vincentius—*Exsp. disp.*
- P. Maureau, Alphonsus—*Doc. rud. C, Mod. acad., Praes. sod. S. J. Berchm., Conc. in t., Praef. mor., An. 19 mag.*

- P. Paris, Ludovicus—*Doc. sup. gram., Praef. odei. Conf. NN., Conc. en t., Coll. pp. litt. an. et scrib. hist. dom., Exam. candid. NN., Cons. an. 3, An. 21 mag.*
- P. O'Sullivan, Daniel—*Doc. med. gram., Praes. coll. cas. consc., Conf. NN. et in t., Conc. in t., Praef. lect. ad mens., Exam. candid. NN., Cons. an. 3, An. 14 mag.*
- P. Palomo, Camillus—*Exsp. disp.*

COADJUTORES

- Arrizabalaga, Emmanuel—*Jan., Coq., Cust. tricl., Hortul., Vis. med. et noct., Ad dom.*
- Birmingham, Joannes—*Aedit., Infirm., Disp., Cust. vest., Excit., Vis. exam., Ad dom.*
- Black, Ricardus—*Cur. val. (Extra dom.)*

Sac. 12—Coadj. 3—Univ. 15

Collegium Grand Coteau et Convictus

S. CAROLI

(St. Charles College, Grand Coteau, La.)

- P. Michael Grace—*Rect. a die 24 Feb. 1913, Exam. candid. NN.*
- P. Henricus Devine—*Min., Lect. phil. curs. angl., Praef. eccl. et val. NN., Expl. cat. FF., Exam. candid. NN., Cons. an. 4.*
- P. Baehr, Aemilius—*Proc., Praef. odei, Conf. alumn., Expl. med. FF., Exam. candid. NN., Cons. an. 5.*
- P. Brooks, Robertus M.—*Doc. rhet. et ling. gall., Mod. acad. sen., Praef. lect. ad mens., Praes. coll. cas. consc., Conf. alumn., Collab. libell. period. AMERICA, An. 10 mag.*
- P. Buckley, Joannes—*Doc. hum. litt. ord. super. et ling. hisp., Mod. acad. jun., Praef. bibl., Coll. pp. litt. an. et scrib. hist. dom., An. 10 mag.*
- P. Chamard, Jacobus—*Praef. spir. NN. et alumn., Exhort. NN., Adm., Conf. NN., et alumn., Praes. sod. B. M. V. Imm. Concept. et S. Alois., et soc. apost. orat. pro alumn., Doc. ling. gall.*
- P. Fontan, Ambrosius—*Oper., Conf. NN. et in t., Conc. in t., Praes. sod. B. M. V. Imm. Concept. et S. Ann., congr. bon. mort., soc. apost. orat. et confr. S. Vinc., Cur. ger. schol. paroch., Cat. in t., Cons. an. 3.*
- P. Fox, Andreas B.—*Praef. mor., Doc. 1 curs. angl.*
- P. Habig, Martinus—*Doc. rud. et ling. gall., Conf. alumn.*
- P. Louvet, Paulus—*Miss. excurr., Conf. NN. et alumn., Conc. in t.*
- P. Moore, Jacobus P.—*Oper., Conf. NN. et in t., Conc. in t., Praes. sod. B. M. V. et S. Jos. pro Nigrit., Cat. in t.*
- P. Philippe, Petrus—*Lect. phys., chym. et math., Doc. ling. germ., Cust. mus.*
- P. Pont, Joachim—*Oper., Conf. et conc. in t.*

P. Twelmeyer, Franciscus X.—*Praef. stud., disc. et val. alumn., Exam. candid. NN., Cons. an. 3.*

P. Veau, Jacobus—*Cur. val.*

SCHOLASTICI

Barranger, Paulus—*Doc. inf. gram. et ling. gall., Vis. exam., Adj. praef. mor., An. 2 mag.*

Doonan, Joannes—*Praef. mor., Doc. interm. curs. angl. et math.*

Dougherty, Franciscus X.—*Doc. schol. spec., Adj. proc. et praef. mor., An. 1 mag.*

Johnson, Josephus—*Praef. mor., Doc. 3 curs. angl.*

MacDonald, Ronaldus—*Praef. mor., Doc. 2 curs. angl.*

Quirk, Carolus—*Doc. med. gram., Praes. sod. S. J. Berchm., Adj. praef. mor., An. 1 mag.*

Ryan, Jacobus—*Doc. sup. gram. et ling. hisp., Dir. BORROMEAN, Adj. praef. mor., An. 5 mag.*

Whipple, Georgius—*Doc. hum. litt. ord. infer., Bid., Vis. med., Adj. praef. mor., An. 3 mag.*

COADJUTORES

Brinkhaus, Josephus—*Manud. in praed., Cur. fornac., Fab. ferr. et ling., Ad dom.*

Imsand, Aloisius—*Arment., Cust. cell. vin., Disp., Adj. hortul., Ad dom.*

Lezama, Damasus—*Jan., Cust. vest., Excit., Ad dom.*

Meaza, Innocentius—*Aedit. sac. dom. et alumn., Adj. cust. tricl. NN., Ad dom.*

Miller, Antonius—*Sart., Ad dom.*

Otten, Cornelius—*Arcul., Ad dom.*

Rittmeyer, Henricus—*Cust. tricl. alumn. et cul., Hortul., Vis. noct., Ad dom.*

Schwartz, Bernardus—*Infirm., Ad dom.*

Sengghen, Leo—*Cust. tricl. NN., Ad dom.*

Steiner, Joannes—*Aedit., Adj. jan. et hortul., Ad dom.*

Residentia Key West

S. MARIAE STELLAE MARIS

(Church of St. Mary, Star of the Sea, Key West, Fla.)

- P. Petrus McDonnell—*Sup. a die 2 Aug. 1915, Proc., Praef. eccl., Oper., Praes. sod. B. M. V. et S. Ann., sod. SS. Angel. et congr. bon. mort., Conf. et conc. in t., Cur. ger. schol. paroch., Cat. priv. et in t.*
- P. Redmond, Patritius—*Doc., Conf. NN. et in t., Conc. in t., An. 12 mag.*
- P. Semmes, M. Oliverius—*Oper., Conf. NN. et in t., Conc. in t., Praes. soc. apost. orat., Coll. pp. litt. an. et scrib. hist. dom., Cat. priv. et in t.*

Sac. 3—Univ. 3.

Domus Probationis Matisconensis

S. STANISLAI

(St. Stanislaus College, Macon, Ga.)

P. Aemilius Mattern—*Rect. a die 5 Aug. 1911, Mag. nov., Exam. candid. NN.*

P. Edgar Bernard—*Min. dom. et jun. schol., Proc., Praef. sac. dom. et val., Exam. candid. NN., Cons. an. 19.*

P. Butler, Theobaldus—*Praef. spir. jun. schol., Conf. NN.*

P. Carey, Thomas—*Soc. mag. nov., Expl. med. et cat. FF., Conf. NN., Exam. candid. NN., Cons. an. 2.*

P. Dowling, Leo—*Doc. hum. litt., Praes. coll. cas. consc., Conf. NN., Coll. pp. litt. an. et scrib. hist. dom., Exam. candid. NN., Cons. an. 7.*

P. Meriwether, Gulielmus—*Praef. spir. dom., Adm., Conf. et exhort. NN.*

P. Remy, Julius—*Praef. bibl.*

P. Sullivan, Florentius—*Praef. stud., lect. ad mens. et ton. jun. schol., Doc. rhet., Mod. acad., Collab. libell. period. AMERICA, Cons. an. 1.*

SCHOLASTICI.

AUDITORES RHETORICAE

Eaton, Josephus

Fitzmorris, Edmundus—*Subbid.*

Kelleher, Patritius—*Bid.*

Neale, Franciscus

Watters, Michael—*Vis. med.*

Whipple, Aloisius—*Bid. schol.*

Yancey, Patritius—*Praef. bibl. un. schol.*

AUDITORES HUMANIORUM.

Butt, Josephus
 Cassidy, Eduardus—*Bid. schol.*
 Fabrizio, Antonius
 Fox, Franciscus
 Liotta, Salvator—*Nov.*
 St. Paul, Georgius
 Wales, Georgius—*Vis. exam.*

COADJUTORES

Burchardt, Robertus—*Sut., Cur. fornac., Excit., Ad dom.*
 Eaton, Franciscus X.—*Coq., Hortul.*
 Keller, Stephanus—*Jan., Sart. Cust. vest., Vis. med., exam., mat. et noct.*
 Mendizabal, Raymundus—*Manud. nov., Infirm., Disp., Ad dom.*

NOVITII SCHOLASTICI

Liotta, Salvator	13 Aug. 1913
Dorn, Leo	14 Aug. 1914
Hayes, Georgius	14 Aug. 1914
Mulherin, Gulielmus	14 Aug. 1914
Ray, Theodorus	14 Aug. 1914
Druhan, Joannes	22 Sep. 1914
Callens, Paulus	14 Oct. 1914
Collignon, Gabriel	7 Dec. 1914
Hanemann, Albertus	14 Aug. 1915
Harty, Gulielmus	14 Aug. 1915
Johnson, Josephus	14 Aug. 1915
St. Paul, Henricus A.	14 Aug. 1915
Whelan, Jacobus	14 Aug. 1915
Homes, Josephus	4 Sep. 1915
Janssen, Franciscus	4 Sep. 1915

NOVITII COADJUTORES

Bellemin, Noel	18 Feb. 1914
Blenke, Joannes	2 Sep. 1914
Mirambell, Thomas	15 Mai. 1915

Sac. 8—Schol. 28—Coadj. 7—Univ. 43.

Residentia Matisconensis

S. JOSEPHI

(St. Joseph's Church, Poplar and New Sts, Macon, Ga.)

P. Josephus B. Franckhauser—*Sup. a die 3 Aug. 1913, Proc., Praef. eccl., Oper., Praes. sod. B. M. V. Imm. Concept. et SS. Angel., soc. S. Jos., matr. alt. et apost. orat., Conf. et conc. in t., Coll. pp. litt. an. et scrib. hist. dom., Cur. ger. schol. paroch., Cat. priv. et in t.*

P. Murphy, Daniel—*Oper., Praes. sod. B. M. V. Imm. Concept. et S. J. Berchm., S. Stan. et congr. bon. mort., Conf. NN. et in t., Conc. in t., Praef. bibl., Vis. nosoc., Cat. priv. et in t.*

Sac. 2—Univ. 2.

Residentia Miamiensis

SS. NOMINIS JESU

(Church of the Holy Name, 10th St. and Ave. C, Miami, Fla.)

- P. Jacobus McLaughlin—*Sup. a die 1 Aug. 1914, Proc., Praef. eccl., Oper., Praes. sod. B. M. V. Annunt. et S. Alois. et soc. apost. orat., Conf. et conc. in t., Coll. pp. litt. an. et scrib. hist. dom., Cat. priv. et in t.*
- P. Brislan, Joannes—*Oper., Conf. NN. et in t., Conc. in t., Cur. ger. stat. West Palm Beach, Excurr. ad var. stat., Cat. priv. et in t.*
- P. Hanhauser, Laurentius—*Oper., Praes. sod. B. M. V. Imm. Concept. et S. Cathar., et sod. S. J. Berchm., Conf. NN. et in t., Conc. in t., Vis. nosoc., Excurr. ad var. stat., Cat. priv. et in t.*

Sac. 3—Univ. 3.

Huic Residentiae ad censentur Ecclesiae 2 et Stationes 2 ad quas Patres excurrunt.

Residentia Mobiliensis

S. JOSEPHI

(St. Joseph's Church, Mobile, Ala.)

P. Gulielmus Salentin—*Sup. a die 1 Aug. 1913, Proc., Praef. eccl., Oper., Praes. sod. B. M. V. Imm. Concept. et S. J. Berchm., et congr. bon. mort., Conf. et conc. in t., Cur. ger. schol. paroch., Cat. priv. et in t.*

P. Kennedy, Patritius—*Oper., Praes. sod. S. J. Berchm. Conf. NN. et in t., Conc. in t., Coll. pp. litt. an. et scrib. hist. dom., Praef. bibl., Cat. priv. et in t.*

P. Slevin, Thomas—*Oper., Praes. soc. apost. orat., Dir. CATHOLIC CLUB, Conf. NN. et in t., Conc. in t., Vis. nosoc., Cat. priv.*

Sac. 3—Univ. 3.

Collegium Neo Aurelianense

IMMACULATAE CONCEPTIONIS

(College of the Immaculate Conception, 140 Baronne St., New Orleans, La.)

- P. Joannes D. Foulkes—*Rect. a die 22 Mai. 1913, Praes. sod. B. M. V. Puriss. Cord., Conf. et conc. in t., Exam. candid. NN., Cons. Prov.*
- P. Nicolaus Davis—*Min., Proc. Prov., Praef. eccl. et val., Praes. matr. alt., Exam. candid. NN., Cons. an. 2.*
- P. Bellocq, Leo M.—*Proc., Doc. rud. A, Exam. candid. NN., Cons. an. 3.*
- P. Biever, Albertus—*Sup. miss. excurr., Conc. in t., Dir. soc. apost. orat. dioeces.*
- P. Brown, Andreas—*Doc. rud. A, Praes. congr. bon. mort., Conc. in t., An. 21 mag.*
- P. Dane, Godfridus—*Oper., Conf. alumn. et in t., Cur. ger. dom. Bon. Past.*
- P. Finegan, Franciscus X.—*Doc. sup. gram. ord. super. et ling. hisp., Praef. spir. et conf. alumn., Praes. sod. B. M. V. Imm. Concept. et S. Alois. et soc. apost. orat. pro. alumn., Conc. in t., Praef. lect. ad mens., Collab. libell. period. AMERICA, An. 13 mag.*
- P. Fleuren, Henricus R.—*Doc. phys. et chym. elem. et ling. gall., Conc. in t., Expl. med. et cat. FF., An. 8 mag.*
- P. Gerlach, Josephus—*Oper., Conf. NN. et in t., Cat. in t.*
- P. Gudgeon, Joannes—*Oper., Praes. soc. apost. orat. et confr. S. Vinc., Red. CHURCH CALENDAR, Conf. alumn. et in t., Conc. in t., Praef. odei., Cons. an. 3.*
- P. King, Carolus—*Doc. rud. A et ling. gall., Praes. sod. B. M. V. et S. Alois. pro alumn. jun., Conc. in t., An. 6 mag.*

- P. Macdonnell, Fridericus—*Praef. stud. et disc., Conc. in t., Exam. candid. NN., Cons. an. 5.*
- P. Maza de la, Josephus—*Doc. rud. B et ling. hisp., An. 5 mag.*
- P. McCreary, Joannes—*Miss. excurr., Conc. in t.*
- P. McKervey, Jacobus—*Doc. sup. gram. ord. infer., Conc. in t., An. 9 mag.*
- P. Meyer, Joannes—*Oper., Praef. bibl., Praes. coll. cas. consc., Coll. pp. litt. an. et srib. hist. dom., Conf. NN. et in t., Cat. priv.*
- P. Murphy, Phillippus—*Oper., Praes. sod. B. M. V. Imm. Concept. et S. Joan. Franc. de Chantal, Conf. NN., alumn. et in t., Conc. in t., Cur. ger. schol. paroch., Cat. priv. et in t.*
- P. O'Callaghan, Thomas—*Praef. spir. et exhort. NN., Adm., Oper., Conf. NN., alumn. et in t., Conc. in t., Praes. coll. cas. consc. et disp. theol. pro archidioec. Neo Aurel.*
- P. O'Reilly, Josephus—*Doc. ling. angl., rat. libr. et math. in curs. mercant., An. 21 mag.*
- P. Wagner, Albertus—*Oper., Conf. NN., alumn. et in t.*

SCHOLASTICI

- Beck, Eugenius—*Doc. inf. gram. A et ling. germ., Praef. mor. et odei pro alumn., An. 3 mag.*
- Cummings, Alfredus—*Doc. rud. C, Praes. sod. S. J. Berchm., Praef. bibl. alumn. et mor., An. 3 mag.*
- Daly, Thomas—*Doc. med. gram. A, Cust. mus., Bid., Vis. med., Praef. aul. paen. et mor., An. 3 mag.*
- Murphy, Joannes—*Doc. inf. gram. B et ling. gall., Praef. mor., An. 3 mag.*
- Needham, Daniel—*Doc. rud. B., Praef. mor., An. 1 mag.*
- O'Donohoe, Joannes—*Doc. med. gram. B et ling. hisp., Vis. exam., Praef. mor., An. 2 mag.*

Roy, Albertus—*Doc. inf. gram. C, Mod. acad., Praef. bibl. schol. et mor., An. 1 mag.*

White, Joannes—*Doc. rud. B, Praef. mor., An. 4 mag.*

COADJUTORES

Amacker, Franciscus—*Adj. praef. bibl., Ad dom.*

Bougnon, Franciscus—*Cur. fornac., Fab. ferr. et lign., Ad dom.*

Dougherty, Joannes—*Cust. vest., Excit., Adj. proc., jan. et infirm., Ad dom.*

Sempe, Ludovicus—*Cust. tricl., Vis. noct., Ad dom.*

Zuber, Franciscus—*Jan., Infirm., Disp.*

Sac. 20—Schol. 8—Coadj. 5—Univ. 33.

Collegium Neo Aurelianense

LOYOLAEUM

(Loyola University, St. Charles Ave., New Orleans, La.)

- P. Alphonsus E. Otis—*Rect. a die 5 Mar. 1913, Praes. sod. B. M. V. Imm. Concept. et S. Ignat., Dir. assoc. vet. alumn., Conf. et conc. in t., Exam. candid. NN., Cons. Prov.*
- P. Carolus Klein—*Min., Proc., Praef. eccl. et val., Praes. sod. matr. alt., Conf. alumn. et in t., Conc. in t., Exam. candid. NN., Cons. an. 3.*
- P. Cronin, Patritius—*Doc. rhet., Mod. acad., Praes. coll. cas. consc., Conc. in t., Praef. mor., Cons. an. 1, An. 19 mag.*
- P. Elfer, Paulus A.—*Dir. schol. phys. et chym. exper., Doc. ling. gall., Conc. in t., Praef. mor.*
- P. Kenny, Michael—*Lect. log., metaph. et eth. in schol. phil., Lect. eth. et jur. nat. in schol. jurisprud., Doc. ling. hisp., Conf. NN., Conc. in t., Cat. alumn., Praef. mor., Collab. libell. period. AMERICA.*
- P. King, Terentius—*Doc. hum. litt. ord. infr. et ling. gall., Conc. in t., Praef. mor., Collab. libell. period. AMERICA, An. 5 mag.*
- P. Kunkel, Antonius—*Lect. phys., chym., mechan. et astron., Dir. observ. meteor. et seismolog., Doc. ling. germ., Conc. in t., Praef. mor., Exam. candid. NN., Cons. an. 4.*
- P. Madden, Thomas D.—*Praef. spir. NN. et alumn., Adm., Exhort. NN., Oper., Praes. sod. B. M. V. a Strata et S. Thom. Aquin., soc. apost. orat. pro alumn., sod. B. M. V. Imm. Concept. et S. Alois., congr. bon. mort., sod. S. J. Berchm., soc. apost. orat., soc. SS. Nom. et confr. S. Vinc., Conf. NN., alumn. et in t., Conc. in t., Cur. ger. schol. paroch., Cat. priv. et in t.*

- P. O'Brien, Jacobus—*Script.*, *Conf. NN. et alumn.*, *Conc. in t.*, *Praef. bibl.*, *Expl. med. et cat. FF.*, *Coll. pp. litt. an. et srib. hist. dom.*
- P. Power, Gulielmus—*Script.*, *Trad. exerc. spir.*, *Conf. NN.*, *Conc. in t.*
- P. Sherry, Joannes—*Praef. stud. et disc.*, *Lect. math.*, *Conc. in t.*, *Exam. candid. NN.*, *Cons. an. 3.*
- P. Stritch, Joannes—*Doc. litt. hum. ord. super.*, *Praef. lect. ad mens. et mor.*, *Conc. in t.*, *An. 16 mag.*

COADJUTORES

- Bethancourt, Ludovicus—*Jan. Aedit.*, *Cust. vest.*, *Fab. ferr. et lign.*, *Cur. fornac.*, *Vis. exam. et noct.*, *Ad dom.*
- Hellin, Salvator—*Coq.*, *Cust. tricl.*, *Disp.*, *Excit.*, *Vis. med.*, *Ad dom.*

Sac. 12—Coadj. 2—Univ. 14.

Residentia Selmana

B. M. V. ASSUMPTAE

(Church of the Assumption, Selma, Ala.)

P. Michael Cronin—*Sup. a die. 6 Aug. 1913, Proc., Praef. eccl., Oper., Praes. sod. B. M. V., congr. bon. mort., soc. apost. orat., matr. alt. et benev., Conf. et conc. in t., Cur. ger. schol. paroch., Cat. priv. et in t.*

P. O'Sullivan, Petrus—*Miss. excurr., Conf. NN., Conc. in t.*

P. Stagg, L. Henricus—*Oper., Praef. bibl., Conf. NN. et in t., Conc. in t., Excurr. ad var. stat., Coll. pp. litt. an. et scrib. hist. dom., Cat. priv. et in t.*

Sac. 3—Univ. 3.

Huic Residentiae ad censentur Ecclesiae 2 et Stationes 19 ad quas Patres excurrunt.

Collegium Shreveportense

S. JOANNIS BERCHMANS

(St. John's College, Texas Ave., Shreveport, La.)

- P. Carolus D. Barland—*Rect. a die 27 Feb. 1913, Praef. stud., Praes. sod. B. M. V. Annunt. et S. Jos. pro vir., Conf. et conc. in t., Exam. candid. NN.*
- P. Patritius Marnane—*Min., Praef. eccl. et val., Doc. rud. B, Praef. spir. et conf. alumn., Praes. sod. B. M. V. Imm. Concept. et S. Alois., soc. apost. orat. pro alumn. et soc. matr. alt., Conc. in t., Cons. an. 2., An. 23 mag.*
- P. Diebold, Aemilius—*Doc. med. gram. et ling. germ., Mod. acad., Exhort. et conf. NN., Conc. in t., Praef. mor., Exam. candid. NN., Cons. an. 1, An. 12 mag.*
- P. Fillinger, Gulielmus A.—*Doc. inf. gram. et ling. gall., Adj. proc., Conc. in t., Expl. med. FF., Praef. mor., Coll. pp. litt. an. et scrib. hist. dom., Exam. candid. NN., Cons. an. 3, An. 18 mag.*
- P. Gillow, Stanislaus—*Doc. rud. A. et ling. hisp., Praes. sod. S. J. Berchm., Conc. in t., Praef. bibl. et mor., An. 12 mag.*
- P. Lawton, Daniel P.—*Doc. sup. gram. ord. infer et ling. gall., Conc. in t., Praef. lect. ad mens., Praef. mor., Collab. libell. period. AMERICA, An. 14 mag.*
- P. Maring, Henricus S.—*Proc., Insp. rei temp. Prov., Doc. sup. gram. ord. super. et ling. gall., Praes. coll. cas. consc., Conf. NN., alumn. et in t., Conc. in t., Exam. candid. NN., Cons. an. 3, An. 8 mag.*
- P. Winkelried, Josephus—*Praef. spir., Adm., Oper., Praes. sod. B. M. V. Annunt. et S. Jos. pro mul., congr. bon. mort. et soc. apost. orat., Conf. NN., alumn. et in t., Conc. in t., Expl. cat. FF., Cur. ger. nosoc., Cat. priv. et in t.*

COADJUTORES

Boeni, Aloisius—*Jan. Aedit., Adj. praef. bibl., Cust. vest., Vis. med., exam. et noct., Ad dom.*

Fernandez, Petrus—*Coq., Disp., Infirm., Cust. tricl., Excit., Ad dom.*

Sac. 8—Coadj. 2—Univ. 10.

Collegium Springhillense et Convictus

S. JOSEPHI

(Spring Hill College, Spring Hill, Mobile Co., Ala.)

- P. Eduardus Cummings—*Rect. a die 16 Mar. 1913, Exam. candid. NN., Cons. Prov.*
- P. Joannes J. Navin—*Min., Praef. eccl. et val. NN., Conc. et cat. in t., Exam. candid. NN., Cons. an. 3.*
- P. Barry, Firminus—*Oper., Conf. NN., alumn. et in t., Doc. ling. hisp.*
- P. Blatter, Alfredus—*Doc. ling. germ., Conf. NN.*
- P. Cronin, Daniel—*Praef. mor., Lect. math.*
- P. Doherty, Andreas—*Doc. hum. litt. ord. infer., Conf. alumn. et in t., Conc. in t., Expl. med. FF., An. 8 mag.*
- P. Fazakerley, Eduardus I.—*Doc. rhet., Adj. praef. stud., Mod. acaa. sen., Conf. et conc. in t., Collab. libell. period. AMERICA, An. 19 mag.*
- P. Kearns, Josephus C.—*Praef. stud., disc. et val. alumn., Exam. candid. NN., Cons. an. 2.*
- P. Moriniere de la, Emmanuel—*Lect. log., metaph. et eth., Praef. lect. ad mens., Conf. NN., Conc. in t., Doc. ling. gall., Cons. an. 5.*
- P. Nowlan, Coemgenus A.—*Doc. hum. litt. ord. super., Mod. acad. jun., Praes. sod. B. M. V. Reg. Angel. et S. Alois., Conf. alumn. et in t., Conc. in t., An. 14 mag.*
- P. Rittmeyer, Georgius—*Lect. phil. curs. angl., Doc. ling. hisp., Praef. bibl., Praes. coll. cas. consc., Coll. pp. litt. an. et scrib. hist. dom., Conf. NN. et alumn.*

- P. Ruhlmann, Cyrillus—*Lect. phys., et chym., Dir. observ. seismolog.*
- P. Ryan, Palritius—*Praef. spir. NN. et alumn., Exhort. NN., Adm., Conf. NN. et alumn., Praes. sod. B. M. V. Imm. Concept. et S. Jos., et soc. apost. orat. pro alumn., Expl. cat. FF.*
- P. Wagemans, Fridericus—*Doc. rud. B, An. 16 mag.*
- P. Wilkinson, Gulielmus A.—*Proc., Conc. in t., Exam. candid. NN., Cons. an. 3.*
- P. Wocet, Oscar—*Cur. val. (Extra dom.)*

SCHOLASTICI

- Bryant, Robertus—*Praef. mor., Doc. rud. A.*
- Chisholm, Benedictus—*Doc. 1 curs. angl., Adj. praef. mor., Vis. med., An. 1 mag.*
- Greely, Jacobus—*Doc. 2 curs. angl., Adj. praef. mor., Cust. mus., An. 1 mag.*
- Francis, Georgius A.—*Doc. 3 curs. angl., Praef. odei, Adj. lect. chym. et praef. mor., An. 5 mag.*
- McAuley, Joannes—*Doc. schol. spec. et ling. gall., Praes. sod. S. J. Berchm., Adj. praef. mor., Vis. exam., An. 1 mag.*
- Monsabert de, Andreas—*Doc. sup. gram. et ling. gall., Bid., Adj. praef. mor., An. 4 mag.*
- Morton, Arthurus—*Praef. mor., Doc. biol. elem. et ling. angl.*
- Mulry, Aloysius—*Praef. mor., Doc. rud. A.*
- O'Connor, Eugenius—*Doc. inf. gram., Dir. SPRINGHILLIAN, Adj. praef. mor., An. 3 mag.*
- Ruggeri, Gulielmus—*Doc. med. gram., Adj. praef. mor., An. 1 mag.*

COADJUTORES

Castresana, Hilarius—*Jan., Aedit., Ad dom.*

Cohnen, Gulielmus—*Hortul., Vis. mat. et noct., Ad dom.*

Escher, Benjaminus—*Cur. fornac., Fab. ferr. et lign., Cust. cell. vin.,
Ad dom.*

Gill, Pascal—*Cust. vest., Vis. med. et exam., Ad dom.*

Jost, Franciscus—*Manud. famul., Disp., Excit., Ad dom.*

Magrath, Georgius—*Cust. tricl. NN., Adj. proc. et praef. bibl., Ad dom.*

Melder, Fridericus—*Adj. hortul., Ad dom.*

Miller, Joannes—*Infirm., Adj. jan., Ad dom.*

Rickard, Franciscus A.—*Adj. cust. vest., Ad dom.*

Sac. 16—Schol. 10—Coadj. 9—Univ. 35.

Collegium Tampanum

SS. CORDIS JESU

(College of the S. Heart, Florida Ave. and Madison St., Tampa, Fla.)

P. Michael McNally—*Rect. a die 31 Jul. 1913, Praef. stud., Conf. et conc. in t., Exam. candid. NN.*

P. Laurentius P. White—*Min., Proc., Praef. eccl. et val., Praef. spir. et conf. alumn., Praes. sod. B. M. V. Assumpt. et S. J. Berchm., soc. apost. orat. pro alumn., sod. B. M. V. Imm. Concept. et S. Petri Clav. pro Nigrit., Conf. et conc. in t., Doc. ling. hisp., Exam. candid. NN., Cons. an. 6.*

P. Bashnal, Ludovicus—*Oper., Excurr. ad var. stat., Praes. coll. cas. consc., Conf. NN., alumn. et in t., Conc. in t., Exam. candid. NN., Cons. an. 3.*

P. Cronin, Joannes—*Doc. rud. A, Praes. sod. B. M. V. Coron. et S. Franc. Xav., Conc. in t., Praef. mor., Cons. an. 1, An. 8 mag.*

P. Friend, Alexander—*Oper., Conf. NN., alumn. et in t., Cat. priv. et in t.*

P. Haggerty, Thomas—*Doc. rud. B, Praes. sod. S. J. Berchm., Conc. in t., Praef. bibl. et mor., An. 12 mag.*

P. Jourdan, Gratianus—*Oper. Ybor City, Conf. NN.*

P. Latiolais, Alfredus—*Oper., Excurr. ad var. stat., Conf. alumn.*

P. Leeuwe Cornelius—*Doc. inf. gram. et ling. hisp., Conc. in t., Praef. mor., An. 4 mag.*

P. Macready, Renuatus—*Doc. sup. gram., Praes. congr. bon. mort., Conf. NN., et in t., Conc. in t., Coll. pp. litt. an. et scrib. hist. dom., Praef. lect. ad mens. et mor., Exam. candid. NN., Cons. an. 1, An. 15 mag.*

- P. Oberholzer, Julius—*Cur. ger. stat. West Tampa, Praes. sod. B. M. V. Annunt. et SS. Angel., B. M. V. Imm. Concept. et S. Alois., S. J. Berchm., congr. bon. mort. et soc. apost. orat., Conf. et conc. in t., Cur. ger. schol. paroch., Cat. priv. et in t.*
- P. Padilla, Aloisius—*Oper. Ybor City, Praes. sod. SS. Sacr., Conf. et conc. in t., Cat. priv. et in t.*
- P. Stockalper de, Alexius—*Praef. spir. et exhort. NN., Adm., Oper., Praes. sod. B. M. V. Annunt. et S. Alois., et B. M. V. Annunt. et S. Ignat., Conf. NN., alumn. et in t., Conc. in t., Cat. priv. et in t.*
- P. Tyrrell, Gulielmus—*Cur. ger. stat. Ybor City, Oper., Praes. sod. B. M. V. Imm. Concept. et S. Alois., sod. SS. Angel., congr. bon. mort. et soc. apost. orat., Conf. NN. et in t., Conc. in t., Cur. ger. schol. paroch., Cat. priv. et in t.*
- P. Wallace, Jacobus—*Doc. med. gram. et ling. hisp., Mod. acad., Praes. sod. apost. orat., Conc. in t., Praef. mor., An. 9 mag.*

COADJUTOR.

McCarten, Eduardus—*Jan., Aedit., Cust. vest. et tricl., Disp., Excit., Vis. med., exam. et noct., Ad dom.*

Sac. 15—Coadj. 1—Univ. 16.

Huic Collegio ad censentur Ecclesiae 12 et Stationes 46 ad quas Patres excurrunt.

Degentes Extra Provinciam

In Aragoniae

McGrath, Thomas	<i>Aud. theol. curs. maj. an. 1</i>
Walsh, Josephus M.	" " " " " 1
<i>(Colegio de S. Ignacio, Sarria, Barcelona, Spain)</i>	

In Californiae

Ferris, Gulielmus	<i>Aud. phil. an. 1</i>
Gwynn, Ludovicus	" " " 1
Joyce, Patritus	" " " 1
McCarthy, Joannes	" " " 1
O'Loughlin, Thomas	" " " 1
Ray, Samuel	" " " 1
Shields, Franciscus	" " " 1
<i>(Gonzaga University, Spokane, Wash.)</i>	

In Canadensi

P. Brewer, Alfredus	<i>Doc. inf. gram.</i>
<i>(Loyola College, 68 Drummond St., Montreal, Canada)</i>	
Hutchins, Joannes	<i>Doc. inf. gram.</i>
<i>(College, Saint-Boniface, Man., Canada)</i>	
Bryan, Daniel H.	<i>Aud. theol. curs. maj. an. 1</i>
Carbajal, Josephus B.	" " " " " 1
Cummings, Felix	" " " " " 1
Carbajal, Facundus	" " " <i>min.</i> " 1
McHardy, Georgius	" " " " " 1
Wagner, Augustinus	<i>Aud. phil. " 2</i>
<i>(L'Immaculee Conception, Rue Rachel, Montreal, Canada)</i>	

In Lugdunensē

- P. Burk, Aloisius.....*Aud. theol. curs. maj. an. 4*
 Obering, Gulielmus..... “ “ “ “ “ 3
 (*Ore Place, Hastings, England.*)
 Freret, Edmundus—*Coadj.*
 (*5, Chemin de la Courtille, Ste-Foye-lez-Lyon, France.*)

In Marylandia Neo-Eboracensē

- P. Semple, Henricus C.—*Oper.*
 (*30 West Sixteenth St., New York City.*)
 P. Reville, Joannes—*Adj. redact. libell. period. AMERICA, Script.,*
Cens. libr.
 (*59 East 83rd Street, New York City.*)
 P. Cronin, Michael.....*Ag. 3 an. prob.*
 P. Cronin, Timotheus..... “ “ “
 (*Novitiate of St. Andrew-on-Hudson, Poughkeepsie, N. Y.*)
 P. Burke, Martinus.....*Aud. theol. curs. maj. an. 4*
 P. Clarke, Thomas..... “ “ “ “ “ 4
 Entz, Franciscus X..... “ “ “ “ “ 3
 Rousseau, Achilles..... “ “ “ “ “ 3
 Cavey, Franciscus..... “ “ “ “ “ 2
 P. Clarkson, Felix..... “ “ “ *min.* “ 4
 Kearney, Gulielmus.....*Aud. phil. an. 3*
 Maring, Carolus..... “ “ “ “ 3
 Reed, Gulielmus..... “ “ “ “ 3
 Yancey, Gulielmus..... “ “ “ “ 3
 Burns, Gualterus..... “ “ “ “ 2
 Campana, Michael..... “ “ “ “ 2
 Deignan, Joannes..... “ “ “ “ 2
 Toups, Laurentius..... “ “ “ “ 2
 (*Woodstock College, Woodstock, Md.*)

In Mexicana

P. Molina, Pastor—*Oper.**(Merida, Yucatan, Mex.)*

In Missouriana

P. Farrell, Josephus E.....*Aud. theol. curs. maj. an. 4*

Reagan, Gulielmus..... “ “ “ “ “ 3

Seidl, Clemens..... “ “ “ “ “ 3

Bassich, Josephus B..... “ “ “ “ “ 2

Hynes, Joannes..... “ “ “ “ “ 2

Costello, Bartholomaeus P.....*Aud. phil. an. 3**(St. Louis University, Grand Ave. and Pine St., St. Louis, Mo.)*P. Power, Joannes.....*Ag. 3 an. prob.**(St. Stanislaus, Brooklyn Station, Cleveland, Ohio.)*

In Neapolitana

P. Poche, Oscar M.....*Cur. val.**(St. Patrick's Church, 226 Michigan St., Pueblo, Colo.)**Sac. 13—Schol. 33—Coadj. 1—Univ. 47.*

EX ALIIS PROVINCIIS IN NOSTRA DEGENTES

EX BELGICA

Otten, Cornelius—*Coadj.*

EX CASTELLANA

Arrizabalaga, Emmanuel—*Coadj.*

Mendizabal, Raymundus—*Coadj.*

EX LUGDUNENSI

P. Jourdan, Gratianus

EX MEXICANA

P. Habig, Martinus

P. Heredia, Vincentius

P. Louvet, Paulus

P. Maza de la, Josephus

P. Padilla, Aloisius

P. Palomo, Camillus

EX TOLOSANA

P. Wagner, Albertus

VITA FUNCTI

COGNOMEN ET NOMEN	ANNUS		TEMPUS	LOCUS
	Ætat.	Relig.		
P. Hutchinson, Daniel	36	13	29 Sep.	Neo Aureliae
Pfeiler, Joannes, <i>Coadj.</i>	43	21	29 Nov.	Augustae
P. Higgins, Michael	60	32	30 Dec.	Grand Coteau

Sac. 2—Coadj. 1—Univ. 3

REQUIESCANT IN PACE

Ordo Regiminis

In Domo Probationis Matlesonensis

P. Aemilius Mattern, *Rector*.....5 Aug. 1911

In Collegio Grand Coteau

P. Michael Grace, *Rector*.....24 Feb. 1913

In Collegio Shreveportensi

P. Carolus D. Barland, *Rector*.....27 Feb. 1913

In Collegio Neo-Aurel. Loyolaeo

P. Alphonsus E. Otis, *Rector*.....5 Mar. 1913

In Collegio Springhillensi

P. Eduardus Cummings, *Rector*.....16 Mar. 1913

In Collegio Neo-Aurel. Imm. Cono.

P. Joannes D. Foulkes, *Rector*.....22 Mai. 1913

In Collegio Galvestonensi

P. Augustinus E. Fields, *V. Rector*.....25 Mai. 1913

In Collegio Augustano

P. Joannes Salter, *Rector*.....30 Jul. 1913

In Collegio Tampano

P. Michael McNally, *Rector*.....31 Jul. 1913

INDEX DOMICILIORUM AC NUMERUS SOCIORUM

PAG.	DOMICILIA	SAC.	SCH.	COAD.	UNIV.
5	R. P. Provincialis cum Sociis.....	2	1	3
7	Collegium Augustanum.....	7	2	9
9	Collegium Galvestonense.....	12	3	15
11	Collegium Grand Coteau.....	15	8	10	33
13	Residentia Key West.....	3	3
14	Domus. Prob. Matisconensis.....	8	28	7	43
16	Residentia Matisconensis.....	2	2
17	Residentia Miamiensis.....	3	3
18	Residentia Mobiliensis.....	3	3
19	Coll. Neo-Aurel. Imm. Conc.....	20	8	5	33
22	Coll. Neo-Aurel. Loyolaeum.....	12	2	14
24	Residentia Selmana.....	3	3
25	Collegium Shreveportense.....	8	2	10
27	Collegium Springhillense.....	16	10	9	35
30	Collegium Tampanum.....	15	1	16
32	Socii Extra Provinciam.....	13	33	1	47
	Numerantur	142	87	43	272
	Ex aliis Provinciis	8		3	11
	Soc. Prov. Neo-Aurelianensis	134	87	40	261
	Socii ineunte anno 1915	131	84	41	256
	Augmentum	3	3	-1	5

A. R. P. A.

WLODIMIRUS LEDÓCHOWSKI

PRAEPOSITUS GENERALIS

A DIE 11 FEBRUARII 1915

(Via S. Nicola da Tolentino 8—Roma)

(Pro telegram.: Ledochowski, Collegio Germanico—Roma)

(Interim: Zizers, Grisons, Suisse)

- P. Nalbone, Franciscus de P.—*Assist. Ital., Praef. spir et val., Conf. dom., Exhort. dom. (Sicul.)*
- P. Fine, Eduardus—*Assist. Gall., Admon., Conf. dom. (Ludg.)*
- P. Van Oppenraaij, Rudolphus—*Assist. Germ., Conf. dom. (Neerl.)*
- P. Barrachina, Josephus—*Assist. Hisp., Conf. dom. (Arag.)*
- P. Walmesley, Hermannus—*Assist. Angl., Conf. dom. (Angl.)*
- P. Gannon, Thomas—*Assist. Amer., Conf. dom. (Maryl. N. E.)*
- P. Tacchi-Venturi, Petrus—*Secr. Soc., Revis. gen. libr. (Roma etc.) (Rom.)*
- P. Maertens, Alfredus—*Proc. Gen., Conf. dom. (Roma etc.) (Belg.)*
- P. Wilhelm, Balthasar—*Min., Subst. Secr., Proc., Praef. sac. dom. (Germ.)*
- P. Cassiani Ingoni, Julianus—*Subst. Secr., Catech. FF. Coadj., Expl. med. FF. Coadj. p. v. (Venet.)*
- P. Gerste, Achilles—*Adjut. Secr. Soc., Rev. gen. libr., Praef. lect. ad mens. (Belg.)*
- P. Kleiser, Alphonsus—*Adjut. Secr. soc., (Exaten bij Baexem, Holland) (L.) (Germ.)*
- P. Quintana, Fidelis—*Subst. Secr., Praef. bibl., Expl. med. FF. Coadj. p. v. (Castell.)*
- P. Schmitt, Ludovicus—*Adjut. Secr., soc. (Exaten etc.) (Germ.)*

COADJUTORES

- Baguña, Narcissus—*Aman., Jan., Cur. electr., Ad dom., soc. exeunt.* (Roma etc.) (Arag.)
- Banquells, Ignatius—*Soc. 1 A. R. P. N. Gen., Aman., Aedit., Vis. noct., Ad dom.* (Arag.)
- Beristain, Joachimus—*Soc. 2 A. R. P. N. Gen., Aman., Cust. vest. et lint., Ad dom., Soc. exeunt.* (Castell.)
- Celli, Augustus M.—*Soc. 2 Proc. Gen., Ad dom., Soc. exeunt.* (Roma etc.) (Rom.)
- Del Vecchio, Vincentius—*Aman., Jan., Infirm., Excit., Ad dom., Soc. exeunt.* (Rom.)
- Grau, Theodorus—*Aman., Praef. tricl., Adjut. praef. bibl., Vis. med. et exam., Ad dom., Soc. exeunt.* (Arag.)
- Jannarelli, Philippus—*Sart., Cust. vest. et lint., Tons., Vis. mat., Ad dom., Soc. exeunt.* (Roma etc.) (Rom.)
- Lo Jacono, Josephus—*Empt., Coq., Disp., Cell., Excit.* (Roma etc.) (Sicul.)
- Oteiza, Esdras—*Praef. tricl., Comp. mss. et libr., Ad dom., Soc. exeunt.* (Roma etc.) (Castell.)
- Prieto, Josephus—*Soc. 1 Proc. Gen., Ad dom.* (Roma etc.) (Castell.)
- Przewlekly, Franciscus—*Coq., Disp., Cell.* (Galic.)
- Visser, Franciscus Xav.—*Aman., Jan., Ad dom., Soc. exeunt.* (Roma etc.) (Neerl.)
- Weidinger, Joannes Bapt.—*Aman., Aedit., Ad dom., Soc. exeunt.* (Roma etc.) (Venet.)
- Wenzel, Josephus—*Soc. Adjut. Secr. Soc. (Exaten, etc.)* (Austr.)
- Sac. 15—Coadj. 14—Univ. 29.

N. B.—A die 1 Augusti ad mensem Septembrem fere exeuntem, Curia nostra extra Urbem degit (*Villa Vecchia—Frascati, Prov. di Roma, Italia.*) A die autem 2 Augusti ad 16 eiusdem mensis, quibus diebus ipsa vacationes maiores agit, et a die 1 Octobris ad 10 eiusdem mensis, quo tempore exercitiis spiritualibus operam dat, *ordinarias consultationes suspendit, et consueta negotia non expedit.*

N. B.—Letters addressed to Very Rev. Father General should be written in Latin, in a legible hand and on paper 10½ x 8 in. Strong envelopes should be used, and postage must be prepaid in full.

Revisores Generales Librorum

Ex Assistentia Italiae

- P. Arendt, Gulielmus
- P. Bucceroni, Januarius
- P. Savio, Fidelis
- P. Sciolla, Joannes B.
- P. Tacchi-Venturi, Petrus

Ex Assistentia Germaniae

- P. Fonck, Leopoldus
- P. Gerste, Achilles

Ex Assistentia Galliae

- P. Mechineau, Lucianus
- P. Tournier, Ferdinandus

Ex Assistentia Hispaniae

- P. Huarte, Gabriel
- P. Loinaz, Joannes
- P. Vidal, Petrus

Ex Assistentia Angliae

- P. Hughes, Thomas
- P. Mullan, Alexius J. E.

Prospectus Societatis Jesu Universae

INEUNTE ANNO 1915

ASSISTENTIAE	PROVINCIAE	SACERDOTES	SCHOLASTICI	COADJUTORES	UNIVERSI	AUGMENTUM			
						SAC.	SCHOL.	COADJ.	UNIV.
ITALIAE	Romana	185	102	91	378	-2	-3	-5	-10
	Neapolitana	157	111	89	357	9	-6	1	4
	Sicula	112	53	70	235	6	-7	3	-2
	Taurinensis	161	63	51	275	6	-1	3	8
	Veneta	229	55	100	384	6	-4	-1	1
	<i>Socii Assist. Italiae</i>	<i>844</i>	<i>384</i>	<i>401</i>	<i>1629</i>	<i>25</i>	<i>-21</i>	<i>1</i>	<i>5</i>
GERMANIAE	Austriae	313	120	186	619	-1	2	4	5
	Belgica	611	377	212	1200	10	-23	-3	-16
	Galiciana	227	115	155	497	2	-17	5	-10
	Germaniae	646	247	358	1251	17	-18	-10	-11
	Hungariae	83	56	74	213	-2	5	4	7
	Neerlandica	302	126	135	563	9	-7	2	4
<i>Socii Assist. Germaniae</i>	<i>2182</i>	<i>1041</i>	<i>1120</i>	<i>4343</i>	<i>35</i>	<i>58</i>	<i>2</i>	<i>-21</i>	
GALLIAE	Campaniae	391	217	129	737	8	-1	-4	3
	Franciae	499	140	170	809	-6	-13	—	-19
	Lugdunensis	445	155	175	775	-8	-14	-9	-31
	Tolosana	420	161	133	714	7	-10	-2	-5
<i>Socii Assist. Galliae</i>	<i>1755</i>	<i>673</i>	<i>607</i>	<i>3035</i>	<i>1</i>	<i>-38</i>	<i>-15</i>	<i>-52</i>	
HISPANIAE	Aragoniae	551	271	452	1274	3	-8	1	-4
	Castellana	594	347	435	1376	2	7	11	20
	Lusitana	172	71	112	355	1	-8	1	-6
	Mexicana	144	103	86	333	-2	-4	2	-4
	Toletana	285	115	194	594	1	4	-7	-2
	<i>Socii Assist. Hispaniae</i>	<i>1746</i>	<i>907</i>	<i>1279</i>	<i>3932</i>	<i>5</i>	<i>-9</i>	<i>8</i>	<i>4</i>
ANGLIAE	Angliae	411	188	124	723	10	-6	-1	3
	Californiae	171	156	105	432	7	14	7	28
	Canadensis	138	168	103	409	-3	15	4	16
	Hiberniae	206	122	53	381	7	4	3	14
	Maryl.-Neo-Ebor.	376	406	147	929	2	35	-3	34
	Missouriana	397	306	174	877	3	20	-5	18
	Neo-Aurelianensis	131	84	41	256	3	-2	-2	3
<i>Socii Assist. Angliae</i>	<i>1830</i>	<i>1430</i>	<i>747</i>	<i>4007</i>	<i>29</i>	<i>80</i>	<i>7</i>	<i>116</i>	
UNIVERSI									
<i>Ineunte anno 1915</i>		<i>8357</i>	<i>4435</i>	<i>4154</i>	<i>16946</i>				
<i>Ineunte anno 1914</i>		<i>8262</i>	<i>4481</i>	<i>4151</i>	<i>16894</i>	<i>95</i>	<i>-46</i>	<i>3</i>	<i>52</i>
Augmentum		<i>95</i>	<i>-46</i>	<i>3</i>	<i>52</i>				

N. B.—A. R. Pater Generalis nec non singuli Patres Fratresque Curiae, ne bis in catalogo numerentur, omnes indiscriminatim solummodo suis Provinciis originis, non Provinciae Romanae adscribuntur.

Conspectus Missionum Societatis Jesu

INEUNTE ANNO 1914

MISSIONES.	SAC.	SCH.	COAD.	UNIV.
I.—IN EUROPA.				
Albaniensis (Veneta).....	23	2	17	42
Danica, Suecica (Germaniae).....	35	11	35	81
In Insulis Aegaeis (Sicula).....	8	—	8	16
<i>Universi</i>	66	13	60	139
II.—IN AFRICA.				
Aegyptiaca (Lugdunensis).....	46	10	16	72
Kwangensis (Belgica).....	18	6	14	38
Zambesiana superior (Angliae).....	54	—	32	92
Madagascar, Reun. Maur. (Tolosana).....	63	7	19	89
Betsileensis (Campaniae).....	38	1	12	51
Rhodesia (Galiciana).....	5	—	7	12
<i>Universi</i>	224	24	106	354
III.—IN ASIA.				
Armeniae et Syriae (Lugdunensis).....	133	11	73	217
Indiae Or., Bombayensis (Germaniae).....	89	13	22	124
" " Mangalorensis (Veneta).....	48	9	13	70
" " Bengal., Gallensis (Belgica).....	165	84	32	281
" " Trincomaliensis (Campaniae).....	15	2	3	20
" " Madurensis (Tolosana).....	120	70	24	214
" " Goana (Lusitana).....	18	—	7	25
Sinensis, Nankinensis (Franciae).....	143	15	32	190
" " Tcheu-li merid. orient. (Campaniae).....	68	—	15	83
" " Cantonensis (Lusitana).....	4	2	2	8
Iaponica.....	7	—	—	7
<i>Universi</i>	810	206	223	1239
IV.—IN OCEANI INSULIS				
Insul. Philippinarum (Aragoniae).....	94	15	63	172
Iava, Flores, Celebes (Neerlandiae).....	63	6	9	78
Australiae merid. et orient. (Hiberniae).....	69	15	18	102
<i>Universi</i>	226	36	90	352
V.—IN AMERICA SEPTENTR.				
Miss. Indicae (Canadensis).....	16	2	16	34
" " (Missouriana).....	9	—	24	33
In Stat. Foeder. Alaska austr. et bor. (Californiae).....	21	1	10	32
" " In Montibus Saxosis (Californiae).....	23	1	23	47
" " Color., Nov.-Mex. (Neapolitana).....	57	10	26	93
Honduras Britann. (Missouriana).....	20	4	4	28
Mex. Miss. Tharahumar. (Mexicana).....	10	—	10	20
Antill. Cubana (Castellana).....	48	15	39	102
" " Iamaicensis (Marylandiae-Neo-Eb.).....	21	—	2	23
<i>Universi</i>	225	33	154	412
VI.—IN AMERICA MERIDION.				
Columbiana (Castellana).....	114	40	62	216
Guianensis Britann. (Angliae).....	22	—	1	23
Brasilienensis centr. (Romana).....	47	28	35	110
" " merid. (Germaniae).....	114	14	66	194
" " septentr. (Lusitana).....	60	5	42	107
Aequatorialis et Peruviana (Toletana).....	105	2	56	163
Chilo-Argentinensis (Aragoniae).....	170	28	132	330
<i>Universi</i>	632	117	394	1143
<i>Numerantur</i>	2183	429	1027	3639

Status Societatis Jesu Universae

IN MISSIONIBUS EXTERIS

INEUNTE ANNO 1914

ASSIST.	PROVINCIAE - MISSIONES	SAC.	SCHOL.	COAD.	UNIV.
ITALIAE	Roman (Brasil. centr.).....	47	28	35	110
	Neapolitana (Nov. Mex., Color.).....	57	10	26	93
	Sicula (Ins. Aegaeae).....	8	—	8	16
	Veneta (Alban., Mang.).....	71	11	30	112
	<i>Universi</i>	183	49	99	331
GERMANIAE	Belgica (Beng., Gall., Kwang.).....	183	90	46	319
	Galiciana (Rhod.).....	5	—	7	12
	Germaniae (Bomb., Bras. mer., Dan., Suec.).....	238	38	123	399
	Neerlandiae (Java, Flores, Celebes).....	63	6	9	78
	<i>Universi</i>	489	134	185	808
GALLIAE	Campaniae (Betsil., Sin. Tcheu-li mer. or., Trincom).....	121	3	30	154
	Franciae (Sin. Nankin.).....	143	15	32	190
	Lugdunensis (Syr., Arm., Aegypt.).....	179	21	89	289
	Tolosana (Madag. etc., Madur.).....	183	77	43	303
	<i>Universi</i>	628	116	194	836
HISPANIAE	Aragoniae (Philip., Chilo.-Arg.).....	264	43	195	502
	Castellana (Ant. Cub., Columb.).....	162	55	101	318
	Lusitana (Bras., Goa., Zamb. inf.).....	82	7	51	140
	Mexicana (Tharahumaras).....	10	—	10	20
	Toletana (Aequator., Peruviana).....	105	2	56	163
	<i>Universi</i>	623	107	413	1143
ANGLIAE	Angliae (Guia. Brit., Zamb. sup.).....	76	—	39	115
	Californiae (In Montibus Saxosis, Alaska austr. et bor.).....	44	2	33	79
	Canadensis (Mis. Ind.).....	16	2	16	34
	Hiberniae (Austral. merid. et orient.).....	69	15	18	102
	Marylandiae-Neo-Eb. (Iamaicensis).....	21	—	2	23
	Missouriana (Honduras Britann.).....	29	4	28	61
	<i>Universi</i>	255	23	136	414
	Missio Iaponica.....	7	—	—	7
	<i>Numerantur in Mission. ineunte anno 1914.</i>	2183	428	1027	3638
	“ “ “ “ 1913.*	2159	437	1002	3598
	<i>Augmentum</i>	24	-8	25	41

* Computationem superioris anni 1913, accuratioribus notitiis acceptis, emendavimus.

INDEX
ALPHABETICUS SOCIORUM
INEUNTE ANNO 1916

COGNOMEN ET NOMEN	PAG.	ORTUS	INGRESSUS	GRADUS
A				
COADJUTORES				
Amacker Franc. Xav.....	21	20 Sept. 1847	13 Sep. 1873	15 Aug. 1885
Arizabalaga Emmanuel.....	10	20 Apr. 1879	24 Jul. 1897	15 Aug. 1910
B				
SACERDOTES				
P. Baehr Æmilius.....	11	22 Mai. 1872	7 Sep. 1892	2 Feb. 1912
P. Barland Carolus D.....	25	9 Dec. 1872	24 Sep. 1889	15 Aug. 1910
P. Barrachina Josephus.....	39	24 Mar. 1856	6 Mai. 1873	2 Feb. 1893
P. Barry Firminus.....	27	7 Jul. 1868	14 Sep. 1885	2 Feb. 1905
P. Bashnal Ludovicus G.....	30	23 Jul. 1860	27 Jul. 1882	15 Aug. 1902
P. Bellocq Leo M.....	19	26 Jul. 1875	14 Aug. 1894	2 Feb. 1913
P. Bernard Edgar.....	14	9 Mar. 1862	20 Nov. 1878	2 Feb. 1898
P. Biever Albertus.....	19	24 Apr. 1858	12 Dec. 1875	2 Feb. 1897
P. Blatter Alfredus.....	27	6 Mai. 1849	8 Sep. 1873	2 Feb. 1893
P. Bortell Thomas H.....	7	7 Mai. 1877	7 Sep. 1895	2 Feb. 1914
P. Brewer Alfredus J.....	32	18 Nov. 1864	25 Jun. 1884	15 Aug. 1906
P. Brislan Joannes.....	17	10 Nov. 1848	6 Oct. 1866	15 Aug. 1885
P. Brooks Robertus.....	11	12 Sep. 1877	20 Jul. 1894	
P. Brown Andreas J.....	19	30 Aug. 1863	4 Nov. 1882	2 Feb. 1899
P. Buckley Joannes.....	11	1 Mai. 1876	13 Sep. 1896	2 Feb. 1913
P. Burk Aloisius.....	33	19 Dec. 1882	14 Mar. 1900	
P. Burke Martinus.....	33	24 Jan. 1886	20 Apr. 1900	
P. Butler Theobaldus W.....	14	13 Jul. 1829	23 Sep. 1846	15 Aug. 1869
SCHOLASTICI				
Barranger Paulus.....	12	18 Aug. 1889	21 Mar. 1908	
Bassich Josephus.....	34	2 Jun. 1885	12 Aug. 1902	
Beck Eugenius.....	20	1 Feb. 1888	14 Aug. 1907	
Bryan Daniel H.....	32	24 Feb. 1886	30 Jan. 1902	
Bryant Robertus.....	28	9 Dec. 1891	11 Aug. 1906	
Burns Gualterus.....	33	2 Mar. 1890	9 Jun. 1908	
Butt Josephus.....	15	31 Aug. 1895	6 Sep. 1913	
COADJUTORES				
Baguna, Narcissus.....	40	11 Jul. 1887	9 Jan. 1906	
Banquells Ignatius.....	40	2 Jan. 1849	10 Mai. 1866	2 Feb. 1879
Banuls Franciscus.....	40	13 Feb. 1857	12 Nov. 1874	15 Aug. 1887
Bellemin Noel.....	15	1 Jul. 1866	18 Feb. 1914	

COGNOMEN ET NOMEN	PAG.	ORTUS	INGRESSUS	GRADUS
Beristain Joachimus.....	40	7 Mar. 1864	20 Jun. 1883	15 Aug. 1894
Bethancourt Ludovicus.....	23	24 Apr. 1881	12 Dec. 1905	
Birmingham Joannes.....	10	2 Feb. 1864	30 Jul. 1896	15 Aug. 1909
Black Ricardus.....	10	29 Nov. 1867	13 Jun. 1884	15 Aug. 1900
Blenke Joannes.....	15	24 Jun. 1883	2 Sep. 1914	
Boeni Aloisius.....	26	18 Feb. 1848	9 Sep. 1872	15 Aug. 1885
Bougnon Franciscus.....	21	15 Mar. 1870	7 Aug. 1890	2 Feb. 1902
Brinkhaus Josephus.....	12	22 Jun. 1859	30 Jul. 1875	15 Aug. 1889
Broderick Jacobus.....	8	8 Sep. 1872	7 Sep. 1892	2 Feb. 1903
Burchardt Robertus.....	15	20 Oct. 1872	13 Sep. 1896	15 Aug. 1908
C				
SACERDOTES				
P. Carey Thomas.....	14	27 Mai. 1882	6 Sep. 1897	15 Aug. 1915
P. Cassiani Ingoni J.....	39	21 Dec. 1872	23 Aug. 1887	2 Feb. 1906
P. Chamard Jacobus.....	11	20 Mar. 1865	22 Sep. 1885	15 Aug. 1903
P. Clarke Thomas.....	33	1 Oct. 1875	5 Mai. 1902	
P. Clarkson Felix.....	33	1 Sep. 1879	3 Mai. 1901	
P. Cronin Daniel.....	27	15 Feb. 1877	30 Aug. 1894	2 Feb. 1914
P. Cronin Joannes.....	30	23 Nov. 1873	7 Sep. 1892	2 Feb. 1913
P. Cronin Michael F.....	24	21 Jan. 1871	2 Dec. 1890	15 Aug. 1905
P. Cronin Michael J.....	33	27 Feb. 1878	30 Jan. 1898	
P. Cronin Patritius.....	22	2 Sep. 1867	6 Sep. 1886	2 Feb. 1905
P. Cronin Patritius S.....	9	12 Feb. 1883	14 Nov. 1898	
P. Cronin Timotheus.....	33	7 Nov. 1881	30 Jan. 1898	
P. Cummings Eduardus A.....	27	9 Jul. 1872	12 Sep. 1891	15 Aug. 1911
SCHOLASTICI				
Callens, Paulus.....	15	25 Aug. 1895	14 Oct. 1914	
Campana Michael.....	33	11 Mai. 1891	5 Oct. 1909	
Carbajal Facundus.....	32	27 Nov. 1879	30 Oct. 1904	
Carbajal Josephus B.....	32	21 Feb. 1886	14 Aug. 1903	
Cassidy Eduardus.....	15	3 Aug. 1895	13 Aug. 1913	
Cavey Franciscus.....	33	10 Sep. 1886	10 Sep. 1901	
Chisholm Benedictus.....	28	9 Apr. 1889	4 Jul. 1908	
Collignon, Gabriel.....	15	23 Feb. 1892	7 Dec. 1914	
Costello Bartholomaeus P.....	34	7 Dec. 1887	28 Sep. 1906	
Cummings Alfredus.....	20	31 Mai. 1890	27 Sep. 1908	
Cummings Felix.....	32	20 Nov. 1884	29 Dec. 1903	
COADJUTORES				
Castresana Hilarius.....	29	21 Oct. 1860	12 Nov. 1886	3 Feb. 1897
Celli Augustus.....	40	13 Dec. 1848	3 Mai. 1867	2 Feb. 1879
Cohen Gulielmus.....	29	25 Nov. 1859	22 Oct. 1884	15 Aug. 1896
D				
SACERDOTES				
P. Dane Godfridus.....	19	3 Mar. 1865	28 Jul. 1882	15 Aug. 1913
P. Davis Nicolaus.....	19	27 Jan. 1850	7 Sep. 1870	3 Feb. 1890
P. De Beurme Theophilus.....	9	21 Apr. 1855	12 Dec. 1875	2 Feb. 1894
P. De Potter Jacobus.....	5	12 Jul. 1855	27 Apr. 1875	3 Feb. 1896
P. Devine Henricus A.....	11	20 Apr. 1869	6 Sep. 1886	15 Aug. 1906
P. Diebold Æmilius.....	25	30 Mar. 1874	7 Sep. 1893	2 Feb. 1913
P. Doherty Andreas.....	27	2 Jan. 1876	7 Sep. 1892	15 Aug. 1912
P. Dowling Leo T.....	14	19 Apr. 1873	10 Sep. 1889	15 Aug. 1908

COGNOMEN ET NOMEN	PAG.	ORTUS	INGRESSUS	GRADUS
SCHOLASTICI				
Daly Thomas.....	20	28 Mar. 1888	30 Jul. 1906	
Deignan Joannes.....	33	22 Mai. 1891	15 Oct. 1910	
Doonan Joannes.....	12	21 Jan. 1888	17 Sep. 1903	
Dorn Leo.....	15	8 Oct. 1897	14 Aug. 1914	
Dougherty Franc. X.....	12	23 Aug. 1888	31 Aug. 1909	
Druhan Joannes.....	15	14 Mar. 1893	22 Sep. 1914	
COADJUTORES				
Del Vecchio Vincentius.....	40	13 Dec. 1868	2 Feb. 1886	2 Feb. 1899
Dougherty Joannes.....	21	1 Jun. 1867	13 Jun. 1884	2 Feb. 1899
E				
SACERDOS				
P. Elfer Paulus Æ.....	22	17 Aug. 1873	1 Oct. 1890	15 Aug. 1913
SCHOLASTICI				
Eaton Josephus.....	14	7 Mai. 1892	24 Sep. 1909	
Entz Franciscus X.....	33	20 Apr. 1883	2 Sep. 1903	
COADJUTORES				
Eaton Franc. X.....	15	5 Dec. 1893	24 Sep. 1909	
Escher Benjaminus.....	29	5 Mai. 1876	1 Jan. 1896	15 Aug. 1906
F				
SACERDOTES				
P. Farrell Josephus S.....	34	13 Feb. 1877	28 Jul. 1903	
P. Fazakerley Eduardus I.....	27	9 Mai. 1867	31 Aug. 1885	15 Aug. 1906
P. Fields Augustinus E.....	9	16 Mar. 1870	10 Sep. 1889	15 Aug. 1910
P. Fillinger Gulielmus A.....	25	11 Nov. 1867	13 Sep. 1887	15 Aug. 1908
R. P. Fine, Eduardus.....	39	28 Mai. 1847	1 Sep. 1865	15 Aug. 1884
P. Finegan Franciscus X.....	19	18 Mai. 1875	13 Aug. 1892	15 Aug. 1911
P. Fleuren Henricus R.....	19	18 Mai. 1873	7 Sep. 1892	2 Feb. 1912
P. Fontan Ambrosius.....	11	23 Jan. 1858	18 Feb. 1874	2 Feb. 1895
P. Foulkes David J.....	9	25 Mai. 1877	13 Sep. 1896	
P. Foulkes Joannes D.....	19	1 Dec. 1867	13 Sep. 1887	15 Aug. 1909
P. Fox Andreas B.....	11	24 Jan. 1866	3 Sep. 1889	15 Aug. 1909
P. Franckhauser Joseph B.....	16	6 Jan. 1866	1 Nov. 1888	15 Aug. 1905
P. Friend Alexander.....	30	7 Mai. 1849	6 Nov. 1872	15 Sep. 1895
SCHOLASTICI				
Fabrizio Antonius.....	15	4 Sep. 1894	13 Aug. 1913	
Ferris Gulielmus.....	32	19 Jul. 1883	3 Mar. 1908	
Fitzmorris Edmundus.....	14	10 Oct. 1893	2 Sep. 1911	
Fox Franciscus.....	15	30 Aug. 1895	13 Aug. 1913	
Francis Georgius A.....	28	24 Dec. 1886	27 Sep. 1905	
COADJUTORES				
Fernandez Petrus.....	26	29 Jun. 1864	17 Jun. 1887	2 Feb. 1898
Freret Edmundus.....	33	4 Mai. 1846	15 Apr. 1870	15 Aug. 1882
G				
SACERDOTES				
P. Gaffney Eduardus.....	9	18 Jul. 1850	24 Oct. 1870	3 Feb. 1890

COGNOMEN ET NOMEN	PAG.	ORTUS	INGRESSUS	GRADUS
P. Gannon, Thomas J.	39	14 Jul. 1853 13 Mar. 1859	3 Aug. 1873 5 Aug. 1876	2 Feb. 1897 15 Aug. 1896
P. Gerlach Josephus	19	29 Jul. 1842	12 Oct. 1865	15 Aug. 1881
P. Gerste Achilles	39	2 Jul. 1854	3 Oct. 1873	15 Aug. 1890
P. Gillow Stanislaus	9	24 Dec. 1875	7 Sep. 1892	2 Feb. 1912
P. Grace Michael A.	11	4 Feb. 1873	16 Sep. 1889	15 Aug. 1908
P. Gudgeon Joannes J.	19	23 Apr. 1864	31 Aug. 1885	15 Aug. 1901
P. Guyol Amadeus	9	25 Aug. 1856	30 Jul. 1875	3 Feb. 1896
SCHOLASTICI				
Greely Jacobus	28	14 Aug. 1889	8 Apr. 1908	
Gwynn Ludovicus	32	9 Oct. 1891	10 Sep. 1911	
COADJUTORES				
Gil Pascal	29	4 Jan. 1869	17 Jun. 1887	15 Aug. 1899
Grau Theodorus	40	8 Jan. 1866	26 Apr. 1883	2 Feb. 1896
H				
SACERDOTES				
P. Habig, Martinus J.	11	10 Mar. 1876	1 Sep. 1897	15 Aug. 1910
P. Haggerty Thomas A.	30	24 Feb. 1871	25 Oct. 1893	2 Feb. 1913
P. Hanhauser Laurentius	17	11 Aug. 1869	25 Feb. 1900	2 Feb. 1913
P. Heredia, Vincentius	9	19 Mai. 1863	6 Jan. 1865	25 Mar. 1898
SCHOLASTICI				
Hanemann, Albertus	15	22 Nov. 1898	14 Aug. 1915	
Harty, Gulielmus	15	6 Mai. 1897	14 Aug. 1915	
Hayes Georgius	15	16 Jan. 1899	14 Aug. 1914	
Hommes, Josephus	15	7 Nov. 1893	4 Sep. 1915	
Hutchins Joannes	32	10 Feb. 1887	11 Aug. 1904	
Hynes Joannes G.	34	24 Jun. 1886	27 Apr. 1901	
COADJUTOR				
Hellin Salvator	23	13 Aug. 1869	16 Sep. 1888	2 Feb. 1901
I				
COADJUTOR				
Imsand Aloisius	12	24 Dec. 1865	16 Feb. 1887	15 Aug. 1898
J				
SACERDOS				
P. Jourdan Gratianus	30	10 Apr. 1832	1 Mai. 1855	2 Feb. 1873
SCHOLASTICI				
Janssen, Franciscus	15	6 Mar. 1898	4 Sep. 1915	
Johnson Josephus	12	27 Jan. 1883	6 Sep. 1906	
Johnson, Josephus	15	16 Nov. 1895	14 Aug. 1915	
Joyce Patritius	32	18 Mar. 1876	17 Aug. 1910	

COGNOMEN ET NOMEN	PAG.	ORTUS	INGRESSUS	GRADUS
COADJUTORES				
Jannarelli Philippus.....	40	28 Mai. 1837	22 Nov. 1857	2 Feb. 1868
Jost Franciscus.....	29	26 Sep. 1842	2 Feb. 1861	15 Aug. 1873
K				
SACERDOTES				
P. Kearns Josephus.....	27	17 Jul. 1880	17 Sep. 1897	2 Feb. 1915
P. Kennedy Patritius.....	18	11 Jan. 1857	3 Sep. 1874	2 Feb. 1897
P. Kenny Michael.....	22	28 Jun. 1863	6 Sep. 1886	2 Feb. 1903
P. King Carolus.....	19	8 Jul. 1879	12 Jul. 1898	
P. King Terentius.....	22	9 Apr. 1881	25 Jan. 1899	
P. Klein Carolus.....	22	19 Dec. 1848	1 Aug. 1868	15 Aug. 1890
P. Kleiser Alphonsus.....	39	22 Jul. 1876	30 Sep. 1904	
P. Kunkel Antonius L.....	22	22 Feb. 1874	12 Jan. 1892	2 Feb. 1913
SCHOLASTICI				
Kearney Gulielmus.....	33	29 Jun. 1889	30 Jul. 1908	
Kelleher Patritius.....	14	10 Jan. 1886	13 Aug. 1911	
COADJUTOR				
Keller Stephanus.....	15	14 Dec. 1859	12 Feb. 1887	15 Aug. 1897
L				
SACERDOTES				
P. Latiolais Alfredus.....	30	16 Apr. 1869	13 Sep. 1889	15 Aug. 1909
P. Lawton Daniel P.....	25	5 Oct. 1858	3 Sep. 1884	15 Aug. 1901
R. P. LEDOCHOWSKI, WLODIMIRUS.....	39	7 Oct. 1866	24 Sep. 1889	25 Mar. 1901
P. Leeuwe Cornelius.....	30	3 Jun. 1878	3 Sep. 1900	
P. Lonergan Jacobus.....	7	15 Aug. 1835	8 Sep. 1854	2 Feb. 1878
P. Louvet, Paulus.....	11	3 Apr. 1865	30 Sep. 1884	2 Feb. 1899
SCHOLASTICUS				
Liotta Salvator.....	15	16 Oct. 1895	13 Aug. 1913	
COADJUTORES				
Lezama Damasus.....	12	10 Dec. 1867	14 Jul. 1886	15 Aug. 1898
Locher Wendelinus.....	8	17 Apr. 1853	2 Dec. 1882	15 Aug. 1893
Lo Jacono Josephus.....	40	28 Feb. 1869	24 Mar. 1894	15 Aug. 1904
M				
SACERDOTES				
P. Macdonnell Frideric. I.....	20	25 Jul. 1872	12 Nov. 1891	15 Aug. 1911
P. Macready Renatus A.....	30	11 Aug. 1870	7 Sep. 1886	15 Aug. 1905
P. Madden Thomas D.....	22	15 Sep. 1863	22 Jul. 1885	2 Feb. 1904
P. Maertens Alfredus.....	39	26 Sep. 1836	27 Sep. 1862	2 Feb. 1879
P. Maring Henricus S.....	25	28 Sep. 1862	31 Jul. 1880	3 Feb. 1898

COGNOMEN ET NOMEN	PAG.	ORTUS	INGRESSUS	GRADUS
P. Marnane Partritus	25	30 Jul. 1860	4 Nov. 1882	2 Feb. 1899
P. Mattern /Emilius	14	2 Oct. 1865	3 Sep. 1884	3 Feb. 1902
P. Maureau Alphonsus L.	9	28 Mar. 1869	30 Aug. 1887	2 Feb. 1905
P. Maza de la, Josephus.....	20	23 Nov. 1880	13 Dec. 1893	15 Aug. 1915
P. Mc Creary Joannes	20	4 Feb. 1866	15 Aug. 1885	15 Aug. 1903
P. Mc Donnell Petrus	13	9 Oct. 1874	7 Sep. 1892	2 Feb. 1912
P. Mc Kervey Jacobus H.	20	4 Oct. 1878	7 Dec. 1894	2 Feb. 1915
P. Mc Laughlin Alexius C.	7	29 Nov. 1867	14 Aug. 1884	15 Aug. 1905
P. Mc Laughlin Jacobus J.	17	22 Mar. 1862	29 Oct. 1887	15 Aug. 1906
P. Mc Nally Michael	30	4 Nov. 1876	30 Aug. 1894	2 Feb. 1913
P. Meriwether Gulielm. A.	14	28 Jul. 1834	14 Jan. 1886	15 Aug. 1896
P. Meyer Joannes H.	20	27 Jul. 1857	3 Sep. 1884	15 Aug. 1903
P. Molina Pastor	34	1 Nov. 1844	11 Feb. 1883	15 Aug. 1893
P. Moore Jacobus P.	11	21 Feb. 1854	31 Jul. 1880	2 Feb. 1898
P. Moriniere de la Eman'l.	27	17 Apr. 1856	8 Sep. 1873	2 Feb. 1897
R. P. MOYNIHAN MICHAEL	5	17 Feb. 1858	14 Aug. 1876	2 Feb. 1897
P. Murphy Daniel J.	16	2 Dec. 1852	27 Jul. 1882	2 Feb. 1898
P. Murphy Philippus J.	20	2 Dec. 1852	27 Jul. 1882	2 Feb. 1898
SCHOLASTICI				
MacDonald Ronaldus.....	12	14 Feb. 1890	30 Jul. 1908	
Maring Carolus	33	18 Jun. 1893	20 Jun. 1908	
Mc Auley Joannes	28	14 Jun. 1889	24 Oct. 1909	
Mc Carthy Joannes	32	24 Nov. 1894	17 Aug. 1910	
Mc Grath Thomas	32	9 Sep. 1886	20 Sep. 1902	
Mc Hardy Georgius	32	30 Mai. 1885	12 Aug. 1902	
Monsabert (de) Andreas	28	17 Jul. 1886	14 Dec. 1905	
Morton Arthurus	28	26 Sep. 1885	4 Sep. 1906	
Mulherin Gulielmus	15	5 Nov. 1893	14 Aug. 1914	
Mulry Aloisius	28	6 Feb. 1892	30 Jul. 1908	
Murphy Joannes	20	2 Aug. 1885	14 Aug. 1907	
COADJUTORES				
Magrath Georgius	29	10 Nov. 1882	29 Jul. 1901	2 Feb. 1913
Mc Carten Eduardus	31	5 Jun. 1872	25 Jul. 1889	15 Aug. 1903
Meaza Innocentius	12	28 Dec. 1866	19 Dec. 1885	15 Aug. 1897
Melder Fredericus	29	14 Nov. 1860	12 Feb. 1887	15 Aug. 1899
Mendizabal Raymundus	15	11 Jan. 1880	14 Aug. 1900	15 Aug. 1910
Miller Joannes	29	21 Jan. 1876	7 Aug. 1890	15 Aug. 1906
Mirambell, Thomas	15	17 Nov. 1872	15 Mai. 1915	
Muller Antonius	12	21 Jan. 1845	24 Dec. 1867	2 Feb. 1879
N				
SACERDOTES				
P. Nalbone Franc. de P.	39	18 Feb. 1866	30 Oct. 1880	2 Feb. 1902
P. Navin Joannes J.	27	15 Aug. 1869	7 Sep. 1887	15 Aug. 1907
P. Nowlan Coemgenus A.	27	14 Aug. 1873	6 Sep. 1890	15 Aug. 1911
SCHOLASTICI				
Neale Franciscus	14	13 Jul. 1885	14 Aug. 1912	
Needham Daniel	20	22 Jun. 1893	14 Aug. 1912	
O				
SACERDOTES				
P. Oberholzer Julius	31	18 Jan. 1862	26 Jan. 1891	15 Aug. 1911
P. O'Brien Jacobus	23	13 Aug. 1874	7 Sep. 1892	2 Feb. 1912

COGNOMEN ET NOMEN	PAG.	ORTUS	INGRESSUS	GRADUS
P. O'Callaghan Thomas	20	1 Feb. 1848	21 Jul. 1874	15 Aug. 1893
P. Oppenraaij, Rudolphus van	39	17 Oct. 1856	26 Sep. 1873	2 Feb. 1892
P. O'Reilly Josephus	20	8 Mai. 1855	3 Sep. 1874	2 Feb. 1895
P. O'Sullivan Daniel P.	10	13 Apr. 1859	27 Aug. 1880	2 Feb. 1898
P. O'Sullivan Petrus	24	18 Jun. 1874	7 Sep. 1892	15 Aug. 1912
P. Otis Alphonsus E.	22	1 Jul. 1864	10 Sep. 1889	15 Aug. 1907
SCHOLASTICI				
Obering Gulielmus	33	18 Sep. 1886	29 Nov. 1899	
O'Connor Eugenius	28	4 Sep. 1887	1 Mai. 1905	
O'Donohoe Joannes	20	12 Aug. 1887	14 Aug. 1907	
O'Loughlin Thomas	32	23 Mai. 1893	30 Oct. 1911	
COADJUTORES				
Oteiza, Esdras	40	13 Jul. 1879	24 Jul. 1896	15 Aug. 1909
Otten Cornelius	12	12 Mar. 1835	14 Aug. 1855	15 Aug. 1869
P				
SACERDOTES				
P. Padilla, Aloisius	31	24 Mai. 1874	3 Apr. 1897	15 Aug. 1913
P. Palomo, Camillus	10	15 Jul. 1863	11 Feb. 1884	2 Feb. 1898
P. Paris Ludovicus A.	10	16 Mai. 1863	3 Sep. 1884	15 Aug. 1900
P. Philippe Petrus J.	11	5 Feb. 1869	13 Sep. 1887	15 Aug. 1907
P. Poche Oscar M.	34	2 Oct. 1869	9 Oct. 1888	15 Aug. 1907
P. Pont Joachim	11	8 Dec. 1843	19 Oct. 1865	15 Aug. 1888
P. Power Gulielmus	23	19 Apr. 1855	22 Jul. 1873	2 Feb. 1894
P. Power Joannes	34	23 Mar. 1878	20 Oct. 1900	
COADJUTORES				
Peter Ferdinandus	5	26 Apr. 1863	10 Apr. 1884	2 Feb. 1895
Prieto Josephus	40	28 Nov. 1857	14 Aug. 1880	15 Aug. 1890
Przewlekly, Franciscus	40	13 Aug. 1884	23 Mai. 1910	
Q				
SACERDOS				
P. Quintana Fidelis	39	30 Apr. 1867	23 Jun. 1884	2 Feb. 1903
SCHOLASTICUS				
Quirk Carolus	12	1 Feb. 1889	22 Aug. 1906	
R				
SACERDOTES				
P. Redmond Patritius	13	17 Mar. 1872	7 Sep. 1892	2 Feb. 1912
P. Remy Julius J. B.	14	2 Nov. 1865	6 Sep. 1889	15 Aug. 1907
P. Reville Joannes C.	33	4 Feb. 1867	3 Sep. 1884	2 Feb. 1905
P. Rittmeyer Georgius A.	27	13 Apr. 1859	3 Sep. 1874	2 Feb. 1897
P. Ruhlmann Cyrillus	28	2 Jan. 1868	6 Sep. 1889	15 Aug. 1906
P. Ryan Patritius A.	28	18 Nov. 1873	12 Sep. 1891	15 Aug. 1911

COGNOMEN ET NOMEN	PAG.	ORTUS	INGRESSUS	GRADUS
SCHOLASTICI				
Ray Samuel.....	32	11 Jan. 1894	15 Aug. 1910	
Ray Theodorus.....	15	22 Jun. 1898	14 Aug. 1914	
Reagan Gulielmus.....	34	4 Oct. 1884	3 Aug. 1900	
Reed Gulielmus.....	33	22 Jul. 1883	5 Aug. 1908	
Rousseau Achilles.....	33	3 Mar. 1878	28 Jul. 1898	
Roy Albertus.....	20	8 Jan. 1889	20 Jun. 1908	
Ryan Jacobus.....	12	30 Sep. 1887	7 Sep. 1903	
Ruggeri Gulielmus.....	28	11 Jun. 1892	7 Sep. 1907	
COADJUTORES				
Rickard Franciscus A.....	29	4 Oct. 1882	11 Oct. 1899	2 Feb. 1914
Rittmeyer Henricus.....	12	5 Mar. 1864	31 Jul. 1880	2 Feb. 1898
S				
SACERDOTES				
P. Salentin Gulielmus.....	18	17 Mar. 1871	7 Aug. 1890	15 Aug. 1910
P. Salter Joannes M.....	7	23 Jun. 1877	12 Sep. 1894	2 Feb. 1913
P. Schmitt, Ludovicus.....	39	5 Sep. 1846	29 Sep. 1863	2 Feb. 1881
P. Schuler Linus.....	7	11 Jan. 1864	8 Apr. 1885	15 Aug. 1902
P. Semmes M. Oliverius.....	13	10 Aug. 1868	2 Jul. 1887	15 Aug. 1909
P. Semple Henricus C.....	33	18 Oct. 1853	18 Feb. 1876	2 Feb. 1893
P. Sherry Joannes J.....	23	17 Apr. 1870	3 Oct. 1887	15 Aug. 1907
P. Slevin Thomas.....	18	25 Apr. 1858	6 Sep. 1877	2 Feb. 1897
P. Snebelen Amatus J.....	9	31 Jul. 1865	6 Sep. 1886	15 Aug. 1901
P. Stagg Ludovicus H.....	24	28 Mai. 1865	25 Jan. 1889	15 Aug. 1908
P. Stockalper (de) Alexius.....	31	1 Mar. 1855	9 Sep. 1872	2 Feb. 1891
P. Stritch Joannes H.....	23	25 Dec. 1873	25 Jul. 1889	15 Aug. 1909
P. Stritch Thomas E.....	7	2 Mar. 1870	23 Sep. 1888	15 Aug. 1908
P. Sullivan Florentius.....	14	26 Oct. 1883	12 Jul. 1898	
SCHOLASTICI				
Seidl Clemens.....	34	17 Nov. 1882	25 Aug. 1902	
Shields Franciscus.....	32	4 Aug. 1893	17 Aug. 1910	
St. Paul Georgius.....	15	22 Aug. 1897	13 Aug. 1913	
St. Paul, Henricus A.....	15	1 Dec. 1898	14 Aug. 1915	
COADJUTORES				
Schwartz Bernardus.....	12	14 Nov. 1866	8 Mar. 1884	2 Feb. 1899
Sempe Ludovicus.....	21	19 Mar. 1867	12 Mar. 1887	15 Aug. 1899
Sengghen Leo.....	12	18 Jul. 1841	12 Jan. 1877	15 Aug. 1888
Steiner Joannes.....	12	12 Oct. 1853	1 Mar. 1873	15 Aug. 1885
T				
SACERDOTES				
P. Tacchi-Venturi Petrus.....	39	11 Aug. 1861	12 Nov. 1878	2 Feb. 1897
P. Twellmeyer Franciscus X.....	12	21 Jun. 1866	30 Jul. 1885	15 Aug. 1907
P. Tyrrell Gulielmus.....	31	8 Mar. 1854	15 Oct. 1873	2 Feb. 1891

COGNOMEN ET NOMEN	PAG.	ORTUS	INGRESSUS	GRADUS
SCHOLASTICUS				
Toups Laurentius	33	1 Dec. 1893	12 Sep. 1909	
V				
SACERDOS				
P. Veau Jacobus.....	12	15 Aug. 1880	11 Dec. 1896	
COADJUTOR				
Visser Franciscus	40	17 Dec. 1860	4 Oct. 1880	2 Feb. 1892
W				
SACERDOTES				
P. Wagemans Fridericus.....	28	2 Dec. 1866	7 Sep. 1888	2 Feb. 1905
P. Wagner Albertus.....	20	18 Apr. 1846	19 Aug. 1860	15 Aug. 1879
P. Wallace Jacobus J.....	31	20 Mai. 1879	22 Aug. 1895	2 Feb. 1914
P. Walmesley Hermannus.....	39	9 Feb. 1850	18 Dec. 1867	2 Feb. 1886
P. Walsh Michael.....	7	8 Mai. 1875	7 Sep. 1892	2 Feb. 1912
P. White Laurentius P.....	30	12 Apr. 1871	12 Sep. 1891	15 Aug. 1912
P. Wilhelm, Balthasar.....	39	18 Sep. 1873	20 Mai. 1895	15 Aug. 1911
P. Wilkinson Gulielmus.....	28	13 Sep. 1863	6 Sep. 1883	15 Aug. 1902
P. Winkelried Josephus.....	25	9 Aug. 1844	16 Jun. 1865	15 Aug. 1883
P. Wocet Oscar.....	28	16 Apr. 1868	13 Sep. 1887	15 Aug. 1902
SCHOLASTICI				
Wagner Augustinus	32	3 Jul. 1888	24 Jul. 1905	
Wales Georgius	15	4 Mar. 1889	18 Mar. 1913	
Walsh Josephus	32	13 Nov. 1884	20 Jan. 1904	
Watters Michael.....	14	21 Jun. 1891	14 Aug. 1912	
Whelan, Jacobus.....	15	12 Jan. 1899	14 Aug. 1915	
Whipple Aloisius G.....	14	27 Oct. 1892	13 Aug. 1911	
Whipple Georgius A.	12	27 Mar. 1887	2 Aug. 1903	
White Joannes	20	5 Aug. 1885	27 Sep. 1904	
COADJUTORES				
Weidinger Joannes B.....	40	19 Jun. 1890	9 Oct. 1906	
Wenzel Josephus	40	26 Aug. 1861	9 Aug. 1883	15 Aug. 1893
Y				
SCHOLASTICI				
Yancey Gulielmus	33	27 Mar. 1892	11 Oct. 1909	
Yancey Patritius	14	20 Oct. 1896	12 Aug. 1912	
Z				
COADJUTOR				
Zuber Franciscus	21	29 Oct. 1854	1 Mar. 1873	15 Aug. 1885

Inscriptiones Epistolarum

AD RR. PP. PROVINCIALES

- Angliae*—J. Wright, 114, Mount Street, Grosvenor Square, London, W., England.
- Aragoniae*—R. Lloberola, Lauria, 13, Apartado 143, Barcelona, Spain.
- Austriae*—J. B. Wimmer, Canisiusgasse 16, Wien IX., Austria.
- Belgicae*—Æ. Thibaut, Rue Royale, 165, Bruxelles, Belgium.
- Californiae*—R. A. Gleeson, 3220 43rd St., S. E., Portland, Oregon.
- Campaniae*—A. Bonduelle, Maison S. Augustin, 7 Rue des Augustins, Enghien, Belgium.
- Canadensis*—J. Carriere, College Ste. Marie, Rue Bleury, Montreal, Canada.
- Castellanae*—H. Carvajal, Colegio de la Merced, Burgos, Spain.
- Franciae*—N. de Boynes, St. Mary's College, Canterbury, England.
- Galicianae*—P. Bapst, Maly Rynek, 8, Cracovie, Galicie, Austria.
- Germaniae*—L. Kusters, Exaten bij Baaksem, Limburg, Holland.
- Hiberniae*—T. V. Nolan, St. Francis Xavier's, Upper Gardiner St., Dublin, Ireland.
- Hungariae*—F. X. Speiser, Maria-utca 25, Budapest VIII, Hungary.
- Lugdunensis*—C. Chanteur, St. Stanislaus, St. Leonards-on-Sea, England.
- Lusitanae*—A. Pinto, San Telmo 21, Tuy, Spain.
- Maryl. Neo-Ebor.*—A. J. Maas, 30, W. 16th St., New York City.
- Mexicanae*—M. Renaud, Apartado 104 bis, Mexico, D. F., Mexico.
- Missourianae*—A. J. Burrowes, St. Louis University, St. Louis, Mo.
- Neapolitanae*—A. De Francesco, Strada S. Sebastiano, 48 h, Napoli, Italy.

Neerlandicae—E. Beukers, Da Costa-Straat, 44, 's Gravenhage, Holland.

Neo-Aurelian.—M. Moynihan, 140 Baronne Street, New Orleans, La.

Romanae—O. Turchi, Via del Seminario, 120, Roma, Italy.

Siculae—P. Borrello, Piazza Casa Professa, 2, Palermo, Italy.

Taurinensis—F. Calcagno, Via Barbaroux, 28, Torino, Italy.

Toletanae—J. Galvez, Isabel la Catolica, 12, Madrid, Spain.

Tolosanae—D. Carrere, Calle de S. Pedro, 3, Fuenterrabia, Spain.

Venetae—J. Alberti, Fondamenta nuove, 4885, Venezia, Italy.

Inscriptiones Epistolarum

PROVINCIA NEO-AURELIANENSIS

- Augusta*—College of the S. Heart, 1306 Ellis St., Augusta, Ga.
Galveston—University of St. Mary, 14th and Ave. 1, Galveston, Tex.
Grand Coteau—St. Charles College, Grand Coteau, La.
Key West—Church of St. Mary, Star of the Sea, Key West, Fla.
Macon—St. Stanislaus College, Macon, Ga.
 St. Joseph's Church, Poplar and New Sts., Macon, Ga.
Miami—Church of the Holy Name, 10th St. and Ave. C, Miami, Fla.
Mobile—St. Joseph's Church, Mobile, Ala.
New Orleans—College of the Immaculate Conception, 140 Baronne St.,
 New Orleans, La.
 Loyola University, St. Charles Ave., New Orleans, La.
Selma—Church of the Assumption, Selma, Ala.
Shreveport—St. John's College, Texas Ave., Shreveport, La.
Spring Hill—Spring Hill College, Spring Hill, Mobile Co., Ala.
Tampa—College of the S. Heart, Florida Ave. and Madison St., Tampa, Fla.

PROVINCIA CALIFORNIAE

- Akularak*—St. Michael P. O. (for Akularak), Alaska.
Browning—St. Michael's Church, Browning, Mont.
Chewelah—Catholic Church, Chewelah, Stevens Co., Wash.
Colville Mission—St. Francis Mission, Ward P. O., Stevens Co., Wash.
Cordova—Catholic Church, Cordova, Alaska.

- Desmet*—Desmet P. O., Idaho.
- Douglas*—Catholic Church, Douglas, Alaska.
- Fairbanks*—Catholic Church, Fairbanks, Alaska.
- Havre*—St. Jude's Church, Havre, Mont.
- Hillyard*—St. Patrick's Church, 542 Grant St., Hillyard, Wash.
- Holy Cross Mission*—Holy Cross Mission, Holy Cross P. O., Alaska.
- Holy Family Mission*—Family P. O., Teton Co., Mont.
- Juneau*—Catholic Church, Juneau, Alaska.
- Ketchikan*—Catholic Church, Ketchikan, Alaska.
- Klamath Falls*—Catholic Church, Klamath Falls, Ore.
- Lakeview*—Catholic Church, Lakeview, Ore.
- Lewiston*—St. Stanislaus' Church, 633 Fifth Ave., Lewiston, Idaho.
- Los Angeles*—Los Angeles College, 225 W. Ave. 52, Los Angeles, Cal.
- Los Gatos*—Sacred Heart Novitiate, Los Gatos, Cal.
- Manresa*—Manresa, R. F. D. 3, Watsonville, Cal.
- Mary's Igloo*—Mary's Igloo, Shelton P. O., via Nome, Alaska.
- Missoula*—St. F. Xavier's Rectory, Missoula, Mont.
- Nez Perces Mission*—Slickpoo P. O., Nez Perce Co., Idaho.
- Nome*—St. Joseph's Church, Steadman Ave., Nome, Alaska.
- Nulato*—Catholic Church, Nulato, Alaska.
- Okanagan Mission*—Mission P. O., Okanogan Co., Wash.
- Pendleton*—St. Mary's Church, 610 Market St., S. E., Portland, Ore.
- Portland*—St. Ignatius' Church, 3220 43d St., S. E. Portland, Ore.
- St. Michael's Church, 288 Mill St., Portland, Ore.
- Ruby*—Catholic Church, Ruby, Alaska.
- San Francisco*—St. Ignatius University, 2211 Hayes St., San Francisco, Cal.

- San Jose*—St. Joseph's Rectory, San Jose, Cal.
St. Mary's Rectory, 556 S. Second St., San Jose, Cal.
Holy Family Church, River and San Fernando Sts., San Jose, Cal.
Church of the Most Precious Blood, 580 N. Twelfth St., San Jose, Cal.
- Santa Barbara*—Church of Our Lady of Sorrows, 7 E. Figueroa St., Santa Barbara, Cal.
- Santa Clara*—Santa Clara University, Santa Clara, Cal.
- Seattle*—Immaculate Conception Church, 18th and E. Marion Sts., Seattle, Wash.
Seattle College, 916 E. Marion St., Seattle, Wash.
St. Joseph's Church, 18th and E. Aloha Sts., Seattle Wash.
- Spokane*—Gonzaga University, Spokane, Wash.
St. F. Xavier's Church, N. 3715 Standard St., Spokane, Wash.
- St. Ignatius Mission*—St. Ignatius, Missoula Co., Mont.
- St. Michael*—Catholic Church, St. Michael, Alaska.
- St. Paul's Mission*—St. Paul's P. O., Blaine Co., Mont.
- St. Xavier's Mission*—St. Xavier P. O., Big Horn Co., Mont.
- Skagway*—Catholic Church, Skagway, Alaska.
- Slickpoo*—Slickpoo P. O., Nez Perce Co., Idaho.
- Tacoma*—St. Leo's Rectory, 1324 S. Yakima Ave., Tacoma, Wash.
- Tanana*—St. Aloysius Gonzaga Mission, Tanana, Alaska.
- Umatilla Mission*—St. Andrew's School, R. R. No. 1, Box 30, Pendleton, Ore.
- Valdez*—Catholic Church, Valdez, Alaska.
- Yakima*—St. Joseph's Church, North Yakima, Wash.

PROVINCIA MARYL.-NEO-EBORACENSIS

Baltimore—Loyola College, Calvert and Madison Sts., Baltimore, Md.

Boston—Boston College, 761 Harrison Ave., Boston, Mass.

St. Mary's Rectory, 45 Cooper St., Boston, Mass.

Holy Trinity, 14 Cobb St., Boston, Mass.

Bowie—Church of the Ascension, Bowie, Prince George's Co., Md.

Brooklyn—Brooklyn College, 1125 Carroll St., Brooklyn, N. Y.

Buffalo—Canisius College, Main and Jefferson Sts., Buffalo, N. Y.

Canisius High School, 651 Washington St., Buffalo, N. Y.

St. Ann's Rectory, 371 Watson St., Buffalo, N. Y.

Fordham—Fordham University, Fordham, New York, N. Y.

Georgetown—Georgetown College, Washington, D. C.

Holy Trinity Church, 36th and O Sts., N. W., Washington, D. C.

Jersey City—St. Peter's College, 144 Grand St., Jersey City, N. Y.

Leonardtown—St. Aloysius' Rectory, Leonardtown, St. Mary's Co. Md.

New York—College of St. Francis Xavier, 30 West 16th St.,
New York, N. Y.

Loyola School, 980 Park Ave., New York, N. Y.

America Press, 59 East 83rd St., New York, N. Y.

Rectory of Our Lady of Loretto, 303 Elizabeth St., New York, N. Y.

Kohlmann Hall, 181st St., New York, N. Y.

Philadelphia—St. Joseph's College, 18th and Thompson Sts.,
Philadelphia, Pa.

St. Joseph's Church, 321 Willing's Alley, Philadelphia, Pa.

Poughkeepsie—Novitiate of St. Andrew-on-Hudson, Poughkeepsie, N. Y.

South Norwalk—Keyser Island, South Norwalk, Conn.

St. Inigoes—St. Inigoes, St. Mary's Co., Md.

St. Thomas—St. Thomas Manor, Bel Alton P. O., Charles Co., Md.

Washington—Gonzaga College, 19 Eye St., N. W., Washington, D. C.

Woodstock—Woodstock College, Woodstock, Md.

Worcester—Holy Cross College, Worcester, Mass.

Brown's Town—St. Ignatius', Brown's Town P. O,

Buff Bay—Buff Bay P. O.

Kingston—Winchester Park, Kingston

Montego, Bay—Montego Bay

Spanish Town—St. Joseph's Church, Spanish Town P. O.

} Jamaica
West Indies

PROVINCIA MISSOURIANA

Belize—St. John's College, Belize, British Honduras, Cent. Amer.

Benque Viejo—Catholic Church, Benque Viejo, Brit. Honduras, Cent. Amer.

Beulah Isl.—The Island, Mukwonogo P. O., Wis.

Chicago—St. Ignatius College, 1076 W. 12th., Chicago, Ill.

Sacred Heart Residence, 815 West 19th St., Chicago, Ill.

Loyola Academy, Loyola Ave. and Sheridan Rd., Chicago, Ill.

Cincinnati—St. Xavier College, 7th and Sycamore Sts., Cincinnati, O.

Cleveland—St. Ignatius College, Carroll Ave. & W. 30th St., Cleveland, O.
St. Stanislaus', Brooklyn Station, Cleveland, Ohio.

Corozal—Catholic Church, Corozal, British Honduras, Cent. America.

Detroit—University of Detroit, Jefferson Ave., Detroit, Mich.

East St. Louis—St. Francis Regis Residence, 35th St. & Trendley Ave.,
E. St. Louis, Ill.

- Florissant*—St. Stanislaus Seminary, Florissant, St. Louis Co., Mo.
St. Ferdinand Residence, Florissant, St. Louis Co., Mo.
- Kansas City*—St. Aloysius Residence, 1107 Prospect Av., Kansas City, Mo.
Rockhurst Academy, Troost Ave. and 53d St., Kansas City, Mo.
- Mankato*—SS. Peter and Paul's Church, Mankato, Min.
- Milwaukee*—Marquette University, 12th St. and Grand Ave., Milwaukee, Wis.
- Nez Perces*—Nez Perces Mission, Slickpoo P. O. Idaho.
- Omaha*—Creighton University, Omaha, Neb.
- Orange Walk*—Catholic Church, Orange Walk, British Honduras, Cent. Amer.
- Pine Ridge Mission*—Holy Rosary Mission, Pine Ridge Agency, South Dakota.
- Prairie du Chien*—Sacred Heart College, Prairie du Chien, Wis.
- Punta Gorda*—Catholic Church, Punta Gorda, British Honduras, Cent. Amer.
- St. Charles*—St. Charles Borromeo Residence, St. Charles, Mo.
- St. Francis Mission*—St. Francis P. O., South Dakota.
- St. Louis*—St. Louis University, Grand Ave. & W. Pine Bl., St. Louis, Mo.
St. Joseph Residence, 1220 N. 11th St., St. Louis, Mo.
St. Elizabeth Residence, 2721 Pine St., St. Louis, Mo.
- St. Marys*—St. Mary's College, St. Marys, Kan.
- St. Stephen's Mission*—St. Stephen's P. O., Fremont Co., Wyoming.
- San Esteban*—Catholic Church, San Esteban, Brit. Honduras, Cent. Amer.
- Stann Creek*—Catholic Church, Stann Creek, Brit. Honduras, Cent. Amer.
- Superior*—St. Patrick's Rectory, 2008 Lackawanna Av., Superior, Wis.

Toledo—St. John's College, 807 Superior St., Toledo, Ohio.

St. Mary Residence, 618 Michigan St., Toledo, Ohio.

Vermilion—Loyola on the Lake, Vermilion P. O., Erie Co., Ohio.

Waupaca—Loyola Villa, Waupaca, Wis.

