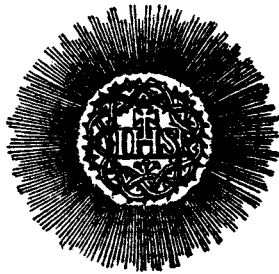


CATALOGUS PROVINCIAE

# NEO AURELIANENSIS

SOCIETATIS JESU

*INEUNTE ANNO 1915*



PRESS OF  
PERRY & BUCKLEY COMPANY  
NEW ORLEANS, LA.



R. P.

MICHAEL MOYNIHAN

PRAEPOSITUS PROVINCIALIS

A DIE 5 JUNII 1911

(140 Baronne Street, New Orleans, La.)

---

(*Pro teleg. transmar.*—PROVINCIAL, NEW ORLEANS)

---

P. Jacobus De Potter—*Soc. a die 15 Aug. 1907, Cons. Prov., Adm.*  
 Ferdinandus Peter—*Soc. Coadj., Aedit. et Manud. fam. in Coll.*

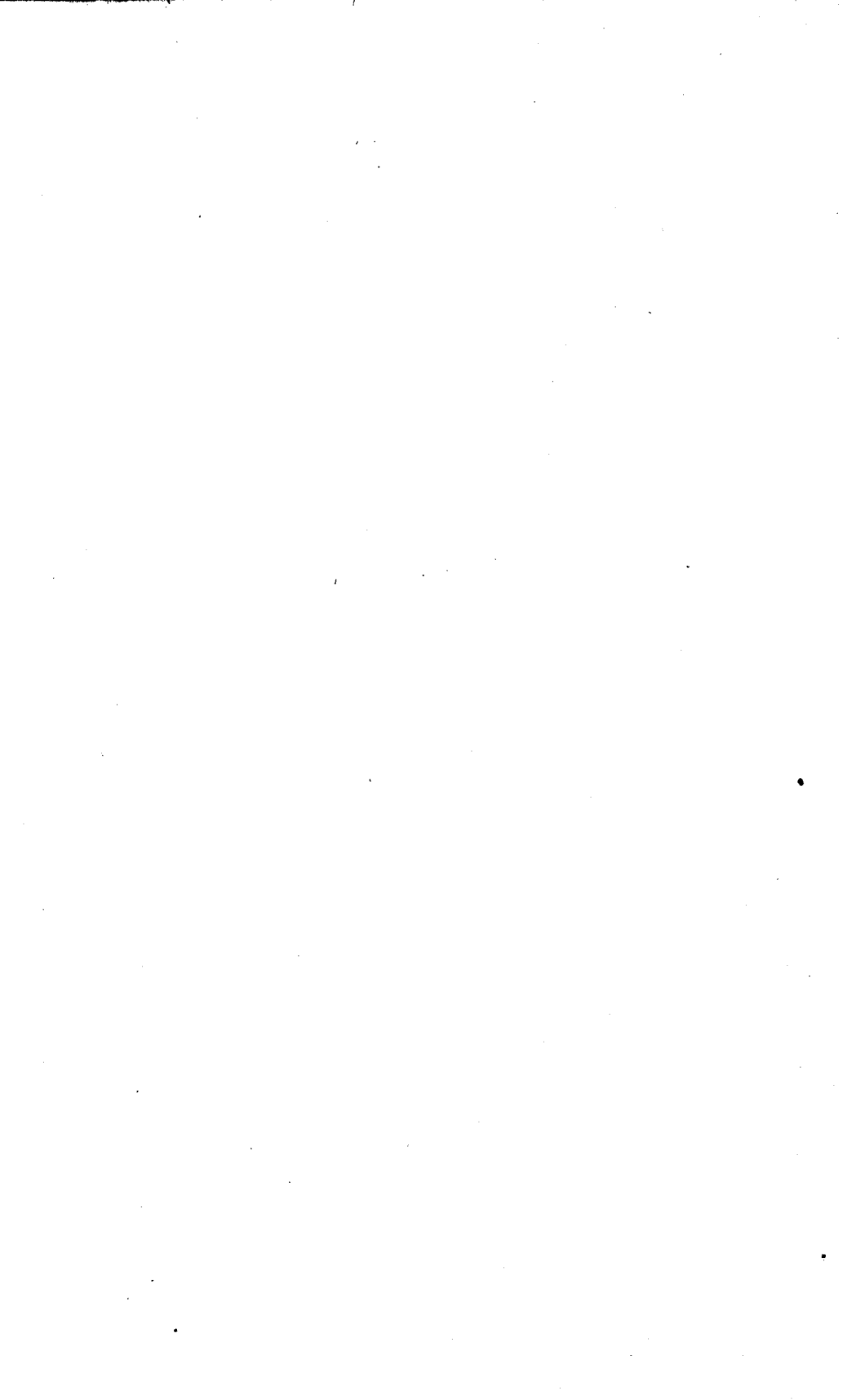
---

CONSULTORES PROVINCIAE

P. Jacobus De Potter—*Soc. R. P. Prov.* . . . . . *a die 15 Aug. 1907*  
 P. Joannes D. Foulkes—*Rect. Coll. Neo Aurel. Imm. Concept.* . . . . .  
 . . . . . *a die 7 Sept. 1911*  
 P. Alphonsus E. Otis—*Rect. Coll. Neo Aurel. Loyol.* . . . . .  
 . . . . . *a die 2 Apr. 1913*  
 P. Eduardus Cummings—*Rect. Coll. Springhill* . . . *a die 2 Apr. 1913*

---

P. Nicolaus Davis—*Proc. Prov., 140 Baronne St., New Orleans, La.,*  
*pag. 18.*



## Collegium Augustanum

### SS. CORDIS JESU

(College of the Sacred Heart, 1306 Ellis St., Augusta, Ga.)

- P. Joannes Salter—*Rect. a die 30 Jul. 1913, Praef. stud., Praes. soc. SS. Nom., Conf. et conc. in t., Exam. candid. NN.*
- P. Linus Schuler—*Min., Proc., Praef. eccl. et val., Praef. spir. et conf. alumn., Conf. et conc. in t., Praes. sod. B. M. V. Imm. Concept. et S. Stan., soc. apost. orat. pro alumn., confr. S. Vinc. et soc. matr. benev., Cur. ger. schol. paroch., Cat. in t., Doc. ling. germ., Cons. an. 4.*
- P. Lonergan, Jacobus—*Praef. spir., Adm., Oper., Conf. NN., FF. schol. christ., alumn. et in t., Cat. extern.*
- P. Macready, Renatus—*Doc. med. gram., Exhort. NN., Conf. NN., alumn. et in t., Conc. in t., Praes. soc. apost. orat., Praef. lect. ad mens., Exam. candid. NN., Cons. an. 8, An. 14 mag.*
- P. McKervey, Jacobus—*Doc. rud. A, Mod. acad. jun., Praef. bibl. alumn., Praes. sod. S. J. Berchm. et congr. bon. mort., Conc. in t., Praef. mor., An. 8 mag.*
- P. Stagg, L. Henricus—*Doc. rud. B et ling. gall., Adj. proc., Conc. in t., Expl. med. et cat. FF., Praef. bibl. et aul. paen., An. 16 mag.*
- P. Stritch, Thomas—*Doc. sup. gram., Conf. NN., Conc. in t., Praes. coll. cas. consc., Exam. candid. NN., Praef. mor., Cons. an. 2, An. 15 mag.*
- P. Walsh, Michael—*Doc. inf. gram., Mod. acad. sen., Conf. et conc. in t., Praes. sod. B. M. V. Imm. Concept. et S. Jos., Coll. pp. litt. an. et scrib. hist. dom., Praef. mor., Collab. libell. period. AMERICA, Exam. candid. NN., Cons. an. 3, An. 9 mag.*

## COADJUTORES

Broderick, Jacobus—*Jan., Infirm., Cust. tricl. et cul., Vis. exam., mat. et noct., Ad dom.*

Locher, Wendelinus—*Aedit., Disp., Cust. vest., Cur. fornac., Excit., Hortul., Vis. med., Ad dom.*

*Sac. 8—Coadj. 2—Univ. 10*

## Collegium Galvestonense

## S. MARIAE

(University of St. Mary, 14th and Ave. I, Galveston, Tex.)

- P. Augustinus E. Fields—*V. Rect. a die 25 Mai. 1913, Praef. stud., Praes. sod. B. M. V. Imm. Concept. et S. Jos., et soc. SS. Nom., Conf. et conc. in t., Exam. candid. NN.*
- P. Amatus Snebelen—*Min., Proc., Praef. eccl. et val., Praef. spir. et conf. alumn., Praes. sod. B. M. V. Imm. Concept. et S. Alois., soc. apost. orat. pro alumn. et soc. matr. alt., Conc. in t., Doc. phys. et chym. elem., et ling. germ., Cons. an. 7.*
- P. DeBeurme, Theophilus—*Doc. rud. A et ling. hisp., Praef. bibl., Conf. et conc. in t., An. 16 mag.*
- P. Foulkes, David—*Doc. inf. gram., Adj. proc., Conc. in t., Expl. med. et cat. FF., Praef. mor., An. 8 mag.*
- P. Gaffney, Eduardus—*Oper., Cur. ger. nosoc., Conf. NN., alumn. et in t., Conc. in t., Praes. sod. B. M. V. Imm. Concept. et S. Agnet., Cat. extern. et in t., Exam. candid. NN., Cons. an. 1.*
- P. Guyol, Amadeus—*Praef. spir. et exhort. NN., Adm., Oper., Conf. NN., alumn. et in t., Praes. sod. B. M. V. Imm. Concept. et S. Stan., congr. bon. mort. et soc. apost. orat., Cur. ger. schol. paroch., Cat. extern. et in t.,*
- P. Maureau, Alphonsus—*Doc. rud. C, Praes. sod. S. J. Berchm., Conc. in t., Praef. mor., An. 18 mag.*
- P. O'Sullivan, Daniel—*Doc. med. gram., Praef. lect. ad mens., Praes. coll. cas. consc., Conf. NN. et in t., Conc. in t., Exam. candid. NN., Cons. an. 2, An. 13 mag.*

- P. Paris, Ludovicus—*Doc. sup. gram., Praef. odei., Conf. NN., Conc. in t., Coll. pp. litt. an. et scrib. hist. dom., Exam. candid. NN. Cons. an. 2, An. 20 mag.*
- P. Redmond, Patritius—*Doc. rud. B et ling. gall., Conc. in t., Praef. mor., An. 11 mag.*

## COADJUTORES

- Arrizabalaga, Emmanuel—*Jan., Coq., Cust. tricl., Hortul., Vis. med. et noct., Ad dom.*
- Birmingham, Joannes—*Aedit., Infirm., Disp., Cust. vest., Excit., Vis. exam., Ad dom.*
- Black, Ricardus—*Cur. val. (Extra dom.)*

*Sac. 10—Coadj. 3—Univ. 13*



# Collegium Grand Coteau et Convictus

S. CAROLI

(St. Charles College, Grand Coteau, La.)

- P. Michael Grace—*Rect. a die 24 Feb. 1913, Exam. candid. NN.*
- P. Henricus Devine—*Min., Lect. phil. curs. angl., Praef. eccl. et val. NN., Expl. cat. FF., Exam. candid. NN., Cons. an. 3.*
- P. Baehr, Aemilius—*Proc., Conf. alumn., Expl. med. FF., Exam. candid. NN., Cons. an. 4.*
- P. Brooks, Robertus—*Doc. hum. litt. ord. super. et ling. gall., Mod. acad. sen., Praef. lect. ad mens., Praes. coll. cas. consc., Collab. libell. period. AMERICA, An. 9 mag.*
- P. Chamard, Jacobus—*Praef. spir. NN. et alumn., Exhort. NN., Adm., Conf. NN., alumn. et in t., Praes. sod. B. M. V. et S. Alois., et soc. apost. orat. pro alumn., Doc. ling. gall.*
- P. Fontan, Ambrosius—*Oper., Conf. NN. et in t., Conc. in t., Praes. sod. B. M. V. Imm. Concept. et S. Ann., congr. bon. mort., soc. apost. orat. et confr. S. Vinc., Cur. ger. schol. paroch., Cat. in t., Cons. an. 2.*
- P. Fox, Andreas B.—*Praef. mor. Doc. 1 curs. angl.*
- P. Haggerty, Thomas—*Doc. hum. litt. ord. infer., Mod. acad. jun., Praef. bibl. et odei, Coll. pp. litt. an. et scrib. hist. dom., An. 11 mag.*
- P. Higgins, Michael—*Lect. log., metaph. et eth., Conf. NN. et alumn.*
- P. Moore, Jacobus P.—*Oper., Conf. NN. et in t., Conc. in t., Praes. sod. B. M. V. et S. Jos. pro Nigrit., Cat. in t.*
- P. Philippe, Petrus—*Lect. phys., chym. et math., Doc. ling. germ., Cust. mus.*
- P. Twellmeyer, Franciscus X.—*Praef. stud., disc. et val. alumn., Exam. candid. NN., Cons. an. 2.*
- P. Veau, Jacobus—*Praef. mor., Doc. 3 curs. angl. et ling. gall.*

## SCHOLASTICI.

- Barranger, Paulus—*Doc. inf. gram. et ling. gall., Praes. sod. S. J. Berchm., Adj. praef. mor., An. 1 mag.*
- Doonan, Joannes—*Praef. mor., Doc. interm. curs. angl. et math.*
- Johnson, Josephus—*Doc. rud., Adj. praef. mor., An. 1 mag.*
- McHardy, Georgius—*Doc. med. gram., Bid., Vis. med. et exam., Adj. proc. et praef. mor., An. 5 mag.*
- Ryan, Jacobus J.—*Doc. sup. gram. et ling. hisp., Adj. praef. mor., An. 4 mag.*
- Whipple, Georgius A.—*Praef. mor., Doc. 2 curs. angl.*
- White, Joannes—*Doc. schol. spec., Adj. praef. mor., An. 3 mag.*

## COADJUTORES

- Brinkhaus, Josephus—*Manud. in praed., Cur. fornac., Fab. ferr. et lign., Ad dom.*
- Imsand, Aloisius—*Cust. cell. vin. Disp., Adj. hortul., Ad dom.*
- Lezama, Damasus—*Aedit. sac. dom. et alumn., Jan., Cust. vest., Excit., Ad dom.*
- Meazza, Innocentius—*Adj. cust., tricl. NN., Ad dom.*
- Miller, Antonius—*Sart., Ad dom.*
- Otten, Cornelius—*Arcul., Ad dom.*
- Rittmeyer, Henricus—*Cust. tricl. alumn. et cul., Hortul., Vis. noct., Ad dom.*
- Schwartz, Bernardus—*Infirm., Ad dom.*
- Sengghen, Leo—*Cust. tricl. NN., Ad dom.*
- Steiner, Joannes—*Aedit., Ad dom.*

*Sac. 13—Schol. 7—Coadj. 10—Univ. 30.*

## Residentia Key West

### S. MARIAE STELLAE MARIS

(Church of St. Mary, Star of the Sea, Key West, Fla.)

P. Oscar M. Poche—*Sup. a die 7 Aug. 1914, Proc., Praef. eccl., Oper., Praes. sod. B. M. V. S. et Ann., SS. Angel., congr. bon. mort. et soc. apost. orat., Conf. et conc. in t., Cur. ger. schol. paroch., Cat. extern. et in t.*

P. Pont, Joachim—*Oper., Conf. NN. et in t., Cat. extern.*

P. Semmes, M. Oliverius—*Doc., Oper., Conf. NN. et in t., Conc. in t., Coll. pp. litt. an. et scrib. hist. dom., An. 15 mag.*

*Sac. 3—Univ. 3.*

## Domus Probationis Matisconensis

S. STANISLAI

(St. Stanislaus College, Macon, Ga.)

- P. Aemilius Mattern—*Rect. a die 5 Aug. 1911, Mag. nov., Exam. candid. NN.*
- P. Edgar Bernard—*Min. dom. et jun. schol., Proc., Praef. sac. dom. et val., Exam. candid. NN., Cons. an. 18.*
- P. Butler, Theobaldus—*Praef. spir. jun. schol., Conf. NN.*
- P. Carey, Thomas—*Soc. mag. nov., Expl. med. et cat. FF., Cons. an. 1.*
- P. Dowling, Leo—*Doc. hum. litt., Praes. coll. cas. consc., Conf. NN., Coll. pp. litt. an. et scrib. hist. dom., Exam. candid. NN., Cons. an. 6.*
- P. Meriwether, Gullielmus—*Praef. spir. dom., Adm., Conf. et exhort. NN.*
- P. Remy, Julius—*Praef. bibl.*
- P. Reville, Joannes—*Praef. stud., lect. ad mens. et ton. jun. schol., Doc. rhet., Mod. acad., Conf. NN., Collab. libell. period. AMERICA, Exam. candid. NN., Cons. an. 12.*

### SCHOLASTICI.

#### AUDITORES RHETORICAE

- Dougherty, Franciscus X.
- Eaton, Josephus
- Gwynn, Ludovicus—*Bid.*
- Joyce, Patritius
- McCarthy, Joannes—*Bid. schol.*
- O'Loughlin, Thomas—*Praef. bibl. jun. schol.*
- Ray, Samuel—*Praef. odei.*
- Shields, Franciscus—*Subbid.*

AUDITORES HUMANIORUM.

Fitzmorris, Edmundus—*Vis. med.*  
 Kelleher, Patritius—*Vis. exam.*  
 Neale, Franciscus—*Nov.*  
 Needham, Daniel  
 Watters, Michael  
 Whipple, Aloisius—*Bid. schol.*  
 Yancey, Patritius

COADJUTORES

Burchardt, Robertus—*Sut., Cur. fornac., Excit., Ad dom.*  
 Eaton, Franciscus X.—*Cust. tricl., Ad dom.*  
 Keller, Stephanus—*Jan., Sart. Cust. vest., Vis. med., exam., mat. et noct.*  
 Mendizabal, Raymundus—*Manud. nov., Infirm., Disp., Ad dom.*  
 Pfeiler, Joannes—*Coq., Hortul.*

NOVITII SCHOLASTICI

Neale, Franciscus—*Aud. hum.* ..... 14 Aug. 1912  
 Wales, Georgius ..... 18 Mar. 1913  
 Cassidy, Eduardus ..... 13 Aug. 1913  
 Fabrizio, Antonius ..... 13 Aug. 1913  
 Fox, Franciscus ..... 13 Aug. 1913  
 Liotta, Salvator ..... 13 Aug. 1913  
 St. Paul, Georgius ..... 13 Aug. 1913  
 Butt, Josephus ..... 6 Sep. 1913  
 Dorn, Leo ..... 14 Aug. 1914  
 Hayes, Georgius ..... 14 Aug. 1914  
 Mulherin, Gulielmus ..... 14 Aug. 1914  
 Ray, Theodorus ..... 14 Aug. 1914  
 Druhan, Joannes ..... 22 Sep. 1914

NOVITII COADJUTORES

Hudson, Carolus ..... 24 Mar. 1913  
 Bellemin, Noel ..... 18 Feb. 1914  
 Blenke, Joannes ..... 2 Sep. 1914

## Residentia Matisconensis

### S. JOSEPHI

(St. Joseph's Church, Poplar and New Sts., Macon, Ga.)

P. Josephus B. Franckhauser—*Sup. a die 3 Aug. 1913, Proc., Praef. eccl., Oper., Praes. sod. B. M. V. Imm. Concept. et SS. Angel., soc. S. Jos., matr. alt. et apost. orat., Conf. et conc. in t., Coll. pp. litt. an. et scrib. hist. dom., Cur. ger. schol. paroch., Cat. extern. et in t.*

P. Murphy, Daniel—*Oper., Praes. sod. B. M. V. Imm. Conc. et S. J. Berchm., S. Stan. et congr. bon. mort., Conf. NN. et in t., Conc. in t., Praef. bibl., Vis. nosoc., Cat. extern. et in t.*

*Sac. 2—Univ. 2.*

## Residentia Miamiensis

### SS. NOMINIS JESU

(Church of the Holy Name, 10th St. and Ave. C, Miami, Fla.)

- P. Jacobus McLaughlin—*Sup. a die 1 Aug. 1914, Proc., Praef. eccl., Oper., Praes. soc. apost. orat., Conf. et conc. in t., Coll. pp. litt. an. et scrib. hist. dom., Cat. extern. et in t.*
- P. Brislan, Joannes—*Oper., Conf. NN. et in t., Conc. in t., Cur. ger. stat. West Palm Beach, Cat. extern. et in t.*
- P. Hanhauser, Laurentius—*Oper., Praes. sod. B. M. V. Imm. Concept. et S. Cathar., Conf. NN. et in t., Conc. in t., Vis. nosoc., Excurr. ad var. stat., Cat. extern. et in t.*

*Sac. 3—Univ. 3.*

Huic Residentiae ad censentur Ecclesiae 2 et Stationes 2 ad quas Patres excurrunt.

---

## Residentia Mobiliensis

### S. JOSEPHI

(St. Joseph's Church, Mobile, Ala.)

- P. Gulielmus Salentin—*Sup. a die 1 Aug. 1913, Proc., Praef. eccl., Oper., Praes. sod. B. M. V. Imm. Concept. et S. J. Berchm., et congr. bon. mort., Conf. et conc. in., Cur. ger. schol. paroch., Cat. extern. et in t.*
- P. Blatter, Alfredus—*Oper., Praef. bibl., Conf. NN. et in t., Cat. extern.*
- P. Kennedy, Patritius—*Oper., Praes. sod. S. J. Berchm. et soc. apost. orat., Dir. CATHOLIC CLUB, Conf. NN. et in t., Coll. pp. litt. an. et scrib. hist. dom., Vis. nosoc., Cat. extern. et in t.*

*Sac. 3—Univ. 3.*

## Collegium Neo Aurelianense

### IMMACULATAE CONCEPTIONIS

(College of the Immaculate Conception, Baronne St., New Orleans, La.)

- P. Joannes D. Foulkes—*Rect. a die 22 Mai. 1913, Conf. et conc. in t., Praes. sod. B. M. V. et S. Ign. et sod. Imm. Concept. pro vir., Exam. candid. NN., Cons. Prov.*
- P. Nicolaus Davis—*Min., Proc., Praef. eccl. et val., Praes. sod. matr. alt., Exam. candid. NN., Cons. an. 1.*
- P. Bellocq, Leo M.—*Proc., Doc. rud. B, Exam. candid. NN., Cons. an. 2.*
- P. Biever, Albertus—*Sup. miss. excurr., Conc. in t., Dir. soc. apost. orat. dioeces.*
- P. Bortell, Thomas H.—*Doc. rud. A et ling. gall., Conc. in t., Praef. odei., An. 7 mag.*
- P. Brown, Andreas—*Doc. rud. B, Praes. congr. bon. mort., Conc. in t., An. 20 mag.*
- P. Dane, Godfridus—*Oper., Conf. alumn. et in t., Cur. ger. dom. Bon. Past.*
- P. Finegan, Franciscus X.—*Doc. sup. gram. et ling. hisp., Praef. spir. et conf. alumn., Praes. sod. B. M. V. Imm. Concept. et S. Alois., et soc. apost. orat. pro alumn., Conc. in t., Praef. lect. ad mens., Collab. libell. period. AMERICA, An. 12 mag.*
- P. Fleuren, Henricus R.—*Doc. med. gram., Conc. in t., Expl. med. et cat. FF., An. 7 mag.*
- P. Gerlach, Josephus—*Oper., Conf. NN. et in t., Cat. in t.*
- P. Gudgeon, Joannes—*Oper., Praes. soc. apost. orat. et confr. S. Vinc., Red. CHURCH CALENDAR, Conf. alumn. et in t., Conc. in t., Cons. an. 2.*
- P. Hutchinson, Daniel—*Conf. alumn. et in t.*
- P. Macdonnell, Fridericus—*Praef. stud. et disc., Conc. in t., Collab. libell. period. AMERICA, Exam. candid. NN., Cons. an. 4.*



- P. McCreary, Joannes—*Miss. excurr., Conc. in t.*
- P. Meyer, Joannes—*Oper., Praef. bibl., Praes. coll. cas. consc., Coll. pp. litt. an. et scrib. hist. dom., Conf. NN. et in t., Cat. extern., Doc. priv.*
- P. Murphy, Philippus—*Oper., Praes. sod. B. M. V. Imm. Concept. et S. Joan. Franc. de Chantal, Conf. NN., alumn. et in t., Conc. in t., Cur. ger. schol. paroch., Cat. extern. et in t.*
- P. O'Callaghan, Thomas—*Praef. spir. et exhort. NN., Adm., Oper., Conf. NN., alumn. et in t., Conc. in t., Praes. coll. cas. consc. et disp. theol. pro archidioec. Neo Aurel.*
- P. O'Reilly, Josephus—*Doc. rud. B, Adj. praef. aul. paen., An. 20 mag.*
- P. Power, Joannes—*Doc. rud. A et ling. gall., Praes. sod. B. M. V. et S. Alois. pro alumn. jun., Conc. in t., An. 5 mag.*
- P. Slevin, Thomas—*Miss. excurr., Oper., Conc. in t.*
- P. Wagner, Albertus—*Oper., Conf. NN., alumn. et in t.*

## SCHOLASTICI

- Beck, Eugenius—*Doc. inf. gram. ord. infer. B et ling. germ., Praef. mor., An. 2 mag.*
- Carbajal, Josephus B.—*Doc. inf. gram. ord. super. A et ling. hisp., Vis. exam., Cust. mus., Praef. mor., An. 5 mag.*
- Cummings, Alfredus—*Doc. rat. libr., stenograph. et script. machin., Praes. sod. S. J. Berchm., Praef. bibl. alumn., Praef. mor., An. 2 mag.*
- Cummings, Felix—*Doc. inf. gram. ord. super. B, Mod. acad., Bid., Praef. aul. paen., Vis. med., An. 5 mag.*
- Daly, Thomas—*Doc. inf. gram. ord. infer. A, Praef. bibl. schol. et mor., An. 2 mag.*
- O'Donohoe, Joannes—*Doc. inf. gram. ord. infer. C et ling. gall., Praef. mor., An. 1 mag.*

## COADJUTORES

- Amacker, Franciscus—*Adj. praef. bibl., Ad dom.*
- Bougnon, Franciscus—*Disp., Cur. fornac., Fab. lign. et ferr., Ad dom.*
- Dougherty, Joannes—*Cust. vest., Excit., Adj. proc., jan. et infirm., Ad dom.*
- Sempe, Ludovicus—*Cust. tricl., Vis. noct., Ad dom.*
- Zuber, Franciscus—*Jan., Infirm.*

# Collegium Neo Aurelianense

## LOYOLAEUM

(Loyola University, St. Charles Ave., New Orleans, La.)

- P. Alphonsus E. Otis—*Rect. a die 5 Mar. 1913, Conf. conc. et in t., Dir. assoc. vet. alumn., Cat. alumn., Exam. candid. NN., Cons. Prov.*
- P. Joannes Sherry—*Min., Praef. eccl. et val., Praes. sod. matr. alt., Lect. math., mechan. et astron., Conc. in t., Exam. candid. NN., Cons. an. 2.*
- P. Cronin, Patritius—*Doc. rhet., Mod. acad., Conc. in t., Collab. libell. period. AMERICA, Praef. mor., An. 18 mag.*
- P. Diebold, Aemilius—*Doc. hum. litt. ord. infer. et ling. germ., Praes. coll. cas. consc., Conc. in t., Praef. mor., An. 11 mag.*
- P. Elfer, Paulus A.—*Adj. lect. phys. et chym., Doc. ling. gall., Conc. in t., Praef. mor., An. 13 mag.*
- P. Klein, Carolus—*Proc., Conf. NN., alumn. et in t., Conc. in t., Cons. an. 2.*
- P. Kunkel, Antonius—*Lect. phys. et chym., Dir. observ. meteor. et seismolog., Conc. in t., Collab. libell. period. AMERICA, Exam. candid. NN., Cons. an. 3.*
- P. Madden, Thomas D.—*Praef. spir. NN. et alumn., Adm., Exhort. NN., Oper., Praes. sod. B. M. V. a Strata. et S. Thom. Aquin., soc. apost. orat. pro alumn., sod. B. M. V. Imm. Concept. et S. J. Berchm., congr. bon. mort., sod. S. Joan. Berchm., soc. apost. orat., SS. Nom. et confr. S. Vinc., Conf. NN., alumn. et in t., Conc. in t., Cur. ger. schol. paroch., Cat. extern. et in t.*
- P. O'Brien, Jacobus—*Script., Conf. NN. et alumn., Conc. in t., Praef. bibl., Expl. med. et cat. FF., Coll. pp. litt. an. et scrib. hist. dom.*
- P. Power, Gulielmus—*Script., Trad. exerc. spir., Conc. in t.*
- P. Ryan, Patritius—*Praef. stud. et disc., Lect. log., metaph. et eth., Conc. in t., Exam. candid. NN., Cons. an. 5.*

P. Stritch, Joannes—*Doc. litt. hum. ord. super. et ling. hisp., Praef. lect. ad mens. et mor., Conc. in t., Collab. libell. period. AMERICA, An. 15 mag.*

## COADJUTORES

Bethancourt, Ludovicus—*Jan., Aedit., Cust. tricl. et vest., Cur. fornac., Vis. exam. et noct., Ad dom.*

Hellin, Salvator—*Coq., Disp., Excit., Vis. med., Ad dom.*

*Sac. 12—Coadj. 2—Univ. 14.*

## Residentia Selmana

### B. M. V. ASSUMPTAE

(Church of the Assumption, Selma, Ala.)

- P. Michael Cronin—*Sup. a die 6 Aug. 1913, Praef. eccl., Oper., Praes. sod. B. M. V., congr. bon. mort., soc. apost. orat., matr. alt. et benev., Conf. et conc. in t., Excurr. ad var. stat., Cur. ger. schol. paroch., Cat. extern. et in t.*
- P. Brewer, Alfredus—*Oper., Praef. bibl., Conf. NN. et in t., Conc. in t., Excurr. ad var. stat., Coll. pp. litt. an. et scrib. hist. dom., Cat. extern. et in t.*

*Sac. 2—Univ. 2.*

Huic Residentiae ad censentur Ecclesiae 2 et Stationes 19 ad quas Patres excurrunt.

## Collegium Shreveportense

S. JOANNIS BERCHMANS

(St. John's College, Texas Ave., Shreveport, La.)

- P. Carolus D. Barland—*Rect. a die 27 Feb. 1913, Praef. stud., Conf. et conc. in t., Exam. candid. NN.*
- P. Patritius Marnane—*Min., Praef. eccl. et val., Doc. rud. B, Praef. spir. et conf. alumn., Praes. sod. B. M. V. Imm. Concept. et S. Alois., soc. apost. orat. pro alumn. et soc. matr. alt., Conc. in t., Cons. an. 1., An. 22 mag.*
- P. Buckley, Joannes—*Doc. rud. A. et ling. hisp., Praes. sod. S. J. Berchm., Praef. bibl., Conc. in t., Praef. mor., An. 9 mag.*
- P. Fillinger, Gulielmus A.—*Doc. inf. gram. et ling. gall., Adj. proc., Conc. in t., Coll. pp. litt. an. et scrib. hist. dom., Expl. med. FF., Praef. mor., Exam. candid. NN., Cons. an. 2, An. 17 mag.*
- P. Maring, Henricus S.—*Proc., Insp. rei temp. Prov., Doc. sup. gram. et ling. gall., Conf. NN., alumn. et in t., Conc. in t., Exam. candid. NN., Cons. an. 2, An. 7 mag.*
- P. O'Sullivan, Petrus—*Doc. med. gram., Mod. acad., Praes. coll. cas. consc., Conf. NN., Conc. in t., Praef. lect. ad mens. et mor., Collab. libell. period. AMERICA, Exam. candid. NN., Cons. an. 1, An. 10 mag.*
- P. Winkelried, Josephus—*Praef. spir. et exhort. NN., Adm. Oper., Praes. sod. B. M. V. Annunt. et S. Jos., congr. bon. mort. et soc. apost. orat., Conf. NN., alumn. et in t., Conc. in t., Expl. cat. FF., Cur. ger. nosoc., Cat. extern. et in t.*

### COADJUTORES

- Boeni, Aloisius—*Jan. Aedit., Adj. praef. bibl., Cust. vest., Vis. med., exam. et noct., Ad dom.*
- Fernández, Petrus—*Coq., Disp., Infirm., Cust. tricl., Excit., Ad dom.*

Sac. 7—Coadj. 2—Univ. 9.

## Collegium Springhilliense et Convictus

S. JOSEPHI

(Spring Hill College, Spring Hill, Mobile Co., Ala.)

- P. Eduardus Cummings—*Rect. a die 16 Mar. 1913, Exam. candid. NN., Cons. Prov.*
- P. Joannes J. Navin—*Min., Praef. eccl. et val. NN., Conc. et cat. in t., Exam. candid. NN., Cons. an. 2.*
- P. Barry, Firminus—*Oper., Conf. NN., alumn. et in t., Doc. ling. angl. et hisp.*
- P. Cronin, Daniel—*Praef. mor., Lect. math., Conc. in t.*
- P. Doherty, Andreas—*Praef. mor., Doc. ling. angl. et hisp., Conc. in t.*
- P. Fazakerley, Eduardus I.—*Doc. rhet. et ling. gall., Mod. acad. sen., Conf. alumn. et in t., Conc. in t., Collab. libell. period. AMERICA, An. 18 mag.*
- P. Kearns, Josephus—*Praef. stud., disc. et val. alumn., Conc. in t., Exam. candid. NN., Cons. an. 1.*
- P. McLaughlin, Alexius C.—*Praef. spir. NN. et alumn., Exhort. NN., Adm., Oper., Conf. NN., alumn. et in t., Praes. sod. B. M. V. Imm. Concept. et S. Jos., et soc. apost. orat. pro alumn., Conc. in t., Expl. cat. FF., Doc. ling. germ.*
- P. Moriniere de la, Emmanuel—*Lect. log., metaph. et eth., Praef. lect. ad mens., Conf. NN., Conc. in t., Doc. ling. gall., Collab. libell. period. AMERICA, Cons. an. 4.*
- P. Nowlan, Coemgenus A.—*Doc. hum. litt. ord. sup., Mod. acad. jun., Praes. sod. B. M. V. Reg. Angel. et S. Alois., Conf. alumn. et in t., Conc. in t., Praef. odei, An. 13 mag.*
- P. Rittmeyer, Georgius—*Lect. phil. curs. angl., Doc. ling. hisp. et germ., Praef. bibl., Praes. coll. cas. consc., Expl. med. FF., Coll. pp. litt. an. et scrib. hist. dom., Conf. NN., alumn. et in t., Conc. in t.*
- P. Ruhlmann, Cyrillus—*Lect. phys., chym. et math., Dir. observ. seismolog., Conc. in t.*
- P. Wagemans, Fridericus—*Doc. schol. spec., Conc. in t., An. 15 mag.*
- P. Wilkinson, Gulielmus—*Proc., Conc. in t., Exam. candid. NN., Cons. an. 2.*
- P. Wocet, Oscar—*Cur. val. (Extra dom.)*

## SCHOLASTICI

- Bryan, Daniel H.—*Praef. mor., Doc. biol. elem.*
- Bryant, Robertus—*Doc. 2 curs. angl., Adj. praef. mor., An. 1 mag.*
- Carbajal, Facundus—*Doc. med. gram. et ling. hisp., Vis. med. et exam., Adj. praef. mor., An. 3 mag.*
- Ferris, Gulielmus—*Doc. rud., Adj. praef. mor., An. 1 mag.*
- Francis, Georgius A.—*Doc. 3 curs. angl. et ling. gall., Cust. mus., Adj. praef. mor., An. 4 mag.*
- McGrath, Thomas—*Praef. mor., Doc. ling. angl.*
- Monsabert de, Andreas—*Doc. sup. gram. et ling. gall., Bid., Adj. proc. et praef. mor., An. 3 mag.*
- Morton, Arthurus—*Doc. 1 curs. angl., Adj. praef. mor., An. 1 mag.*
- Murphy, Joannes—*Doc. ling. lat., graec., angl. et hist., Adj. praef. mor., An. 2 mag.*
- O'Connor, Eugenius—*Doc. inf. gram., Praes. sod. S. J. Berchm., Adj. praef. mor., An. 2 mag.*
- Walsh, Josephus M.—*Doc. hum. litt. ord. infer., Dir. SPRING-HILLIAN, Adj. praef. mor., An. 5 mag.*

## COADJUTORES

- Castresana, Hilarius—*Jan., Aedit., Ad dom.*
- Cohnen, Gulielmus—*Hortul., Vis. mat. et noct., Ad dom.*
- Escher, Benjaminus—*Cur. fornac., Fab. lign. et ferr., Cust. cell. vin., Ad dom.*
- Gil, Pascal—*Cust. vest., Vis. med. et exam., Ad dom.*
- Jost, Franciscus—*Manud. famul., Excit., Adj. cust. vest., Ad dom.*
- Magrath, Georgius—*Cust. tricl. NN., Adj. praef. bibl., Ad dom.*
- Melder, Fridericus—*Adj. hortul., Ad dom.*
- Miller, Joannes—*Infirm., Adj. jan., Ad dom.*
- Rickard, Franciscus A.—*Disp., Ad dom.*

## Collegium Tampanum

### SS. CORDIS JESU

(College of the S. Heart, Florida Ave. and Madison St., Tampa, Fla.)

- P. Michael McNally—*Rect. a die 31 Jul. 1913, Praef. stud., Praes. sod. B. M. V. Annunt. et S. Ign., Conf. et conc. in t., Exam. candid. NN.*
- P. Petrus McDonnell—*Min., Proc., Praef. eccl. et val., Praef. spir. et conf. alumn., Praes. sod. B. M. V. Assumpt. et S. J. Berchm., soc. apost. orat. pro alumn., sod. B. M. V. Coron. et S. Franc. Xav. et congr. bon. mort., Conf. et conc. in t., Cons. an. 1.*
- P. Bashnał, Ludovicus—*Oper., Excurr. ad var. stat., Praes. coll. cas. consc., Conf. NN., alumn. et in t., Conc. in t., Exam. candid. NN., Cons. an. 2.*
- P. Cronin, Joannes—*Doc. rud., Praef. bibl. et mor., Conc. in t., An. 7 mag.*
- P. Friend, Alexander—*Oper. Ybor City, Praes. sod. SS. Sacr., Conf. NN. et in t., Conc. in t., Cat. extern. et in t.*
- P. Gillow, Stanislaus—*Doc. inf. gram. et ling. hisp., Praes. sod. S. J. Berchm., Conc. in t., Praef. mor., Exam. candid. NN., Cons. an. 2, An. 11 mag.*
- P. Jourdan, Gratianus—*Oper. Ybor City, Conf. NN.*
- P. Latiolais, Alfredus—*Oper., Excurr. ad var. stat., Conf. alumn.*
- P. Oberholzer, Julius—*Cur. ger. stat. West Tampa, Oper., Praes. sod. B. M. V. Annunt. et SS. Angel., B. M. V. Imm. Concept. et S. Alois., S. J. Berchm., congr. bon. mort. et soc. apost. orat., Conf. et conc. in t., Cur. ger. schol. paroch., Cat. extern. et in t.*
- P. Stockalper de, Alexius—*Praef. spir. et exhort. NN., Adm., Oper., Praes. sod. B. M. V. Annunt. et S. Alois., Conf. NN., alumn. et in t., Conc. in t., Cat. extern. et in t.*



- P. Tyrrell, Gulielmus—*Cur. ger. stat. Ybor City, Oper., Praes. sod. B. M. V. Imm. Concept. et S. Alois., SS. Angel., congr. bon. mort. et soc. apost. orat., Conf. NN. et in t., Conc. in t., Cur. ger. schol. paroch., Cat. extern. et in t.*
- P. Wallace, Jacobus—*Doc. med. gram. et ling. hisp., Mod. acad., Praes. sod. apost. orat., Conc. in t., Praef. mor., An. 8 mag.*
- P. White, Laurentius P.—*Doc. sup. gram. et ling. hisp., Praes. sod. B. M. V. Imm. Concept. et S. Petri Clav. pro Nigrit., Conf. et conc. in t., Praef. lect. ad mens., Coll. pp. litt. an. et scrib. hist. dom., Collab. libell. period. AMERICA, Exam. candid. NN., Cons. an. 5, An. 12 mag.*

## COADJUTOR.

McCarten, Eduardus—*Jan., Aedit., Cust. vest. et tricl., Disp., Excit., Vis. med., exam. et noct., Ad dom.*

*Sac. 13—Coadj. 1—Univ. 14,*

Huic Collegio ad censentur Ecclesiae 12 et Stationes 46 ad quas Patres excurrunt.

## Degentes Extra Provinciam

### In Californiae

P. Lawton, Daniel P. . . . . *Doc. rhet.*  
*(Santa Clara University, Santa Clara, Cal.)*

### In Campaniae

Burk, Aloisius . . . . . *Aud. theol. curs. maj. an. 3*  
*(Maison S. Augustin, Rue des Augustins 7, Enghien, Belgium.)*

### In Canadensi

Hutchins, Joannes . . . . . *Doc. inf. gram.*  
*(College, St. Boniface, Man., Canada.)*

Wagner, Augustinus . . . . . *Aud. phil. an. 1*  
*(L'Immaculee Conception, Rue Rachel, Montreal, Canada.)*

### In Castellana

P. Leeuwe, Cornelius . . . . . *Aud. theol. curs. maj. an. 4*  
*(Colegio, Ona, Burgos, Spain.)*

Donlan, Henricus . . . . . *Doc. ling. angl.*  
*(Colegio de Belen, Habana, Cuba)*

### In Lugdunensi

P. King, Terentius . . . . . *Aud. theol. curs. maj. an. 4*

Obering, Gulielmus . . . . . " " " " " 2  
*(Ore Place, Hastings, England.)*

Freret, Edmundus—*Coadj.*  
*(College Francais, Bollengo-Ivrea, Italy.)*

### In Marylandia Neo-Eborecensi

P. Semple, Henricus C.—*Oper.*  
*(30 West Sixteenth St., New York City.)*

P. Kenny, Michael—*Adj. redact. libell. period. AMERICA, Script.,*  
*Cens. libr.*  
*(59 East 83rd Street, New York City.)*

P. King, Carolus . . . . . *Ag. 3 an. prob.*

P. Sullivan, Florentius . . . . . " " "  
*(Novitiate of St. Andrew-on-Hudson, Poughkeepsie, N. Y.)*

P. Cronin, Patritius . . . . .	<i>Aud. theol. curs. maj. an.</i>	4
Burke, Martinus . . . . .	" " " " "	3
Clarke, Thomas . . . . .	" " " " "	3
Entz, Franciscus X. . . . .	" " " " "	2
Rousseau, Achilles . . . . .	" " " " "	2
Cavey, Franciscus . . . . .	" " " " "	1
P. Cronin, Michael . . . . .	" " " min.	4
P. Cronin, Timotheus . . . . .	" " " " "	4
Clarkson, Felix . . . . .	" " " " "	3
Chisholm, Benedictus . . . . .	<i>Aud. phil. an.</i>	3
Greely, Jacobus . . . . .	" " " "	3
McDonald, Ronaldus . . . . .	" " " "	3
McAuley, Joannes . . . . .	" " " "	3
Mulry, Aloisius . . . . .	" " " "	3
Quirk, Carolus . . . . .	" " " "	3
Roy, Albertus . . . . .	" " " "	3
Ruggeri, Gulielmus . . . . .	" " " "	3
Burns, Gualterus . . . . .	" " " "	2
Kearney, Gulielmus . . . . .	" " " "	2
Maring, Carolus . . . . .	" " " "	2
Reed, Gulielmus . . . . .	" " " "	2
Yancey, Gulielmus . . . . .	" " " "	2
Campana, Michael . . . . .	" " " "	1
Deignan, Joannes . . . . .	" " " "	1
Toups, Laurentius . . . . .	" " " "	1

(Woodstock College, Woodstock, Md.)

In Mexicana

P. Molina, Pastor—*Oper.*

(Merida, Yucatan, Mex.)

In Missouriiana

Farrell, Josephus E. . . . .	<i>Aud. theol. curs. maj. an.</i>	3
Reagan, Gulielmus . . . . .	" " " " "	2
Seidl, Clemens . . . . .	" " " " "	2
Bassich, Josephus B. . . . .	" " " " "	1
Hynes, Joannes . . . . .	" " " " "	1
Costello, Bartholomaeus P. . . . .	<i>Aud. phil. an.</i>	2

(St. Louis University, Grand Ave. and Pine St., St. Louis, Mo.)

## Ex Aliis Provinciis in Nostra Degentes

---

### Ex Belgica

Otten, Cornelius—*Coadj.*

### Ex Castellana

Arrizabalaga, Emmanuel—*Coadj.*

Mendizabal, Raymundus—*Coadj.*

### Ex Lugdunensi

P. Jourdan, Gratianus

### Ex Tolosana

P. Wagner, Albertus

*Sac. 2—Coadj. 3—Univ. 5.*

**VITA FUNCTI**

COGNOMEN ET NOMEN	ANNUS		TEMPUS	LOCUS
	Ætat.	Relig.		
P. Porta, Augustinus .....	53	36	16 Nov.	Neo Aureliae
P. Faget, Paulus .....	55	38	3 Feb.	Neo Aureliae
P. Downey, Joannes .....	80	60	3 Mai.	Spring Hill

*Sac. 3—Univ. 3*

**REQUIESCANT IN PACE**

## Ordo Regiminis

---

### In Domo Probationis Matlesonens

P. Aemilius Mattern, *Rector*.....5 Aug. 1911

### In Collegio Grand Coteau

P. Michael Grace, *Rector*.....24 Feb. 1913

### In Collegio Shreveportens

P. Carolus D. Barland, *Rector*.....27 Feb. 1913

### In Collegio Neo-Aurel. Loyolaeo

P. Alphonsus E. Otis, *Rector*.....5 Mar. 1913

### In Collegio Springhillens

P. Eduardus Cummings, *Rector*.....16 Mar. 1913

### In Collegio Neo-Aurel. Imm. Cono.

P. Joannes D. Foulkes, *Rector*.....22 Mai. 1913

### In Collegio Galvestonens

P. Augustinus E. Fields, *V. Rector*.....25 Mai. 1913

### In Collegio Augustano

P. Joannes Salter, *Rector*.....30 Jul. 1913

### In Collegio Tampano

P. Michael McNally, *Rector*.....31 Jul. 1913

## INDEX DOMICILIORUM AC NUMERUS SOCIORUM

PAG.	DOMICILIA	SAC.	SCH.	COAD.	UNIV.
5	R. P. Provincialis cum Sociis.....	2	.....	1	3
7	Collegium Augustanum.....	8	.....	2	10
9	Collegium Galvestonense.....	10	.....	3	13
11	Collegium Grand Coteau.....	13	7	10	30
13	Residentia Key West.....	3	.....	.....	3
14	Domus. Prob. Matisconensis.....	8	27	8	43
16	Residentia Matisconensis.....	2	.....	.....	2
17	Residentia Miamiensis.....	3	.....	.....	3
17	Residentia Mobiliensis.....	3	.....	.....	3
18	Coll. Neo-Aurel. Imm. Conc.....	21	6	5	32
20	Coll. Neo-Aurel. Loyolaenum.....	12	.....	2	14
22	Residentia Selmana.....	2	.....	.....	2
23	Collegium Shreveportense.....	7	.....	2	9
24	Collegium Springhillense.....	15	11	9	35
26	Collegium Tampanum.....	13	.....	1	14
28	Socii Extra Provinciam.....	11	33	1	45
30	Numerantur	133	84	44	261
	Ex aliis Provinciis	2	.....	3	5
	Soc. Prov. Neo-Aurelianus	131	84	41	256
	Socii ineunte anno 1914	128	86	39	253
	Augmentum	3	-2	2	3

- R. P. EDUARDUS FINE—*Vicarius Generalis, Assist. Gall. (Ludg.)*
- P. Franciscus de P. Nalbone—*Assist. Ital., Praef. val., Conf. dom. (Sicul.)*
- P. Wlodimirus Ledochowski—*Assist. Germ., Conf. dom. (Gal.)*
- P. Isidorus Zameza—*Assist. Hisp., Conf. dom. (degit in Hisp.) (Castell.)*
- P. Hermannus Walmesley—*Assist. Angl., Conf. dom. (Angl.)*
- P. Josephus Barrachina—*Subst. Assist. Hisp., Conf. dom. (Arag.)*
- P. Petrus Tacchi-Venturi—*Secr. Soc., Revis. gen. libr., Praef. lect. ad mens. (Rom.)*
- P. Alfredus Maertens—*Proc. Gen., Praef. spir., Conf. dom. (Belg.)*
- P. Cassiani Ingoni, Julianus—*Min., Subst. Secr., Proc., Praef. sac. dom., Cat. FF., Expl. med. FF. per vic. (Venet.)*
- P. Gerste, Achilles—*Adj. Secr. Soc., Revis. gen. libr. (Belg.)*
- P. Hafner, Hermannus—*Adj. Secr. Soc. (Exaten bij Baexem, Limburg, Holland). (Germ.)*
- P. Kleiser, Alphonsus—*Par. regist. (Germ.)*
- P. Kofler, Joannes Ev.—*Subst. Secr. Expl. med. FF. per vic. (Austr.)*
- P. Lucas, Petrus—*Subst. Secr. (Franc.)*
- P. Mullan, Alexius Jos. Elder—*Subst. Secr., Praef. bibl., Revis. gen. libr. (Maryl. N. E.)*
- P. Quintana, Fidells—*Subst. Secr., (Castell.)*

(Via di S. Nicola da Tolentino, 8, Roma)

[Pro telegram. FINE, Collegio Germanico, Roma]



## COADJUTORES

- Banquells, Ignatius—*Soc. 1 R. P. Vic. Gen., Aman., Vis. noct., Ad dom. (Arag.)*
- Banuls, Franciscus de Paula—*Aedit. 1, Excit. 2, Compt. libr., Ad dom., Soc. exeunt. (Arag.)*
- Beristain, Joachimus—*Soc. 2 R. P. Vic. Gen., Aman., Praef. tricl., Ad dom., Soc. exeunt. (Castell.)*
- Celli, Augustus M.—*Soc. 2 Proc. Gen., Aedit. 2, Jan. 2, Ad dom., Soc. exeunt. (Rom.)*
- Del Vecchio, Vincentius—*Aman., Infirm. 1, Ad dom., Soc. exeunt. (Rom.)*
- Florentini, Aloisius—*Coq. 2, Disp. 2, Cell. 2, Ad dom., Soc. exeunt. (Rom.)*
- Gaillard, Franciscus—*Aman., Adj. praef. tricl., Ad dom., Soc. exeunt. (Tolos.)*
- Grau, Theodorus—*Aman., Adj. praef. bibl., Vis. med. et exam., Ad dom., Soc. exeunt. (Arag.)*
- Jannarelli, Philippus—*Sart., Cust. vest. et lin., Tons., Vis. mat., Ad dom., Soc. exeunt. (Rom.)*
- Knauf, Mathias—*Infirm. 2, Ad dom., Soc. exeunt. (Germ.)*
- Lo Jacono, Josephus—*Empt., Coq. 1, Disp. 1, Cell. 1, Excit. 1. (Sicul.)*
- Prieto, Josephus—*Soc. 1 Proc. Gen., Ad dom. (Castell.)*
- Visser, Franciscus Xaverius—*Aman., Jan. 1, Ad dom., Soc. exeunt. (Neerl.)*
- Weldinger, Joannes B.—*Aman., Jan. 3, Ad dom., Soc. exeunt. (Venet.)*
- Wenzel, Josephus—*Soc. Adjut. Secr. Societ. (Exaten, etc.) (Austr.)*
- Sac. 16—Coadj. 14—Univ. 30.*

**N. B.**—A die 1 Augusti ad mensem Septembrem fere exeuntem, Curia nostra extra Urbem degit (*Villa Vecchia—Frascati, Prov. di Roma, Italia.*) A die autem 2 Augusti ad 16 eiusdem mensis, quibus diebus ipsa vacationes maiores agit, et a die 1 Octobris ad 10 eiusdem mensis, quo tempore exercitiis spiritualibus operam dat, ordinarias consultationes suscipit, et consueta negotia non expedit.

**N. B.**—Letters addressed to Very Rev. Father General should be written in Latin, in a legible hand and on paper 10½ x 8 in. Strong envelopes should be used, and postage must be prepaid in full.

## Revisores Generales Librorum

---

### Ex Assistentia Italiae

- P. Arendt, Gulielmus
- P. Brandi, Salvator M.
- P. Bucceroni, Januarius
- P. Savio, Fidelis
- P. Sciolla, Joannes B.
- P. Tacchi-Venturi, Petrus

### Ex Assistentia Germaniae

- P. Fonck, Leopoldus
- P. Gerste, Achilles

### Ex Assistentia Galliae

- P. Mechineau, Lucianus
- P. Tournier, Ferdinandus

### Ex Assistentia Hispaniae

- P. Huarte, Gabriel
- P. Loinaz, Joannes
- P. Vidal, Petrus

### Ex Assistentia Angliae

- P. Hughes, Thomas
- P. Mullan, Alexius J. E.

# Prospectus Societatis Jesu Universae

## INEUNTE ANNO 1914

ASSISTENTIAE	PROVINCIAE	SACERDOTES	SCHOLASTICI	COADJUTORES	UNIVERSI	AUGMENTUM			
						SAC.	SCHOL.	COADJ.	UNIV.
ITALIAE	Romana .....	187	105	96	388	—	6	4	10
	Neapolitana .....	148	117	88	353	-5	3	—	-2
	Sicula .....	106	60	67	233	-4	-4	-2	-10
	Taurinensis .....	155	64	48	267	3	-1	1	3
	Veneta .....	223	69	101	383	4	1	5	10
	<i>Universi</i>	819	405	400	1624	-2	5	8	11
GERMANIAE	Austriæ .....	314	118	182	614	1	3	-4	—
	Belgica .....	601	400	215	1216	2	20	-4	18
	Galliciana .....	225	132	150	507	5	-9	-2	-6
	Germaniæ .....	629	265	368	1262	13	16	11	40
	Hungariæ .....	85	51	70	206	5	-8	1	-2
	<i>Universi</i>	293	133	133	559	10	-2	-5	3
	<i>Universi</i>	2147	1099	1118	4364	36	20	-3	53
GALLIAE	Campaniæ .....	383	218	133	734	-4	1	5	2
	Franciæ .....	505	153	170	828	-4	10	-3	3
	Lugdunensis .....	453	169	184	806	1	1	3	5
	Tolosana .....	413	171	135	719	-4	—	—	-4
	<i>Universi</i>	1754	711	622	3087	-11	12	5	6
HISPANIAE	Aragonæ .....	548	279	451	1278	4	10	11	25
	Castellana .....	592	340	424	1356	11	3	-2	12
	Lusitana .....	171	79	111	361	10	-10	1	1
	Mexicana .....	146	107	84	337	9	-2	-5	2
	Toletana .....	284	111	201	596	2	-7	-4	-9
	<i>Universi</i>	1741	916	1271	3928	36	-6	1	31
ANGLIAE	Angliæ .....	401	194	125	720	—	—	2	2
	Californiæ .....	164	142	98	404	9	3	5	17
	Canadensis .....	141	153	99	393	-4	17	6	19
	Hiberniæ .....	199	118	50	367	-1	3	-2	—
	Maryl.-Neo-Ebor. ....	374	371	150	895	12	16	-5	23
	Missouriana .....	394	286	179	859	10	7	-1	16
	Neo-Aurelianensis .....	128	86	39	253	-1	4	-1	2
	<i>Universi</i>	1801	1350	740	3891	25	50	4	79
UNIVERSI SOCII JESU									
Ineunte anno 1914 .....		8262	4481	4151	16894				
Anno 1913 numerabantur .....		8178	4400	4136	16714	84	81	15	180
Augmentum .....		84	81	15	180				

N. B.—A. R. Pater Generalis nec non singuli Patres Fratresque Curiae, ne bis in catalogo numerentur, omnes indiscriminatim solummodo suis Provinciis originis, non Provinciae Romanae adscribuntur.

# Conspectus Missionum Societatis Jesu

## INEUNTE ANNO 1914

MISSIONES.	SAC.	SCH.	COAD.	UNIV.
<b>I.—IN EUROPA.</b>				
Albaniensis (Veneta).....	23	2	17	42
Danica, Suecica (Germaniae).....	35	11	35	81
In Insulis Aegaeis (Sicula).....	8	—	8	16
<i>Universi</i>	<b>66</b>	<b>13</b>	<b>60</b>	<b>139</b>
<b>II.—IN AFRICA.</b>				
Aegyptiaca (Lugdunensis).....	46	10	16	72
Kwangensis (Belgica).....	18	6	14	38
Zambesiana superior (Angliae).....	54	—	32	92
Madagascar, Reun. Maur. (Tolosana).....	63	7	19	89
Betsileensis (Campaniae).....	38	1	12	51
Rhodesia (Galicana).....	5	—	7	12
<i>Universi</i>	<b>224</b>	<b>24</b>	<b>106</b>	<b>354</b>
<b>III.—IN ASIA.</b>				
Armeniae et Syriae (Lugdunensis).....	133	11	73	217
Indiae Or., Bombayensis (Germaniae).....	89	13	22	124
“ “ Mangalorensis (Veneta).....	48	9	13	70
“ “ Bengal., Gallensis (Belgica).....	165	84	32	281
“ “ Trincomaliensis (Campaniae).....	15	2	3	20
“ “ Madurensis (Tolosana).....	120	70	24	214
“ “ Goana (Lusitana).....	18	—	7	25
Sinensis, Nankinensis (Pranciae).....	143	15	32	190
“ Tcheu-li mer.orient. (Campaniae).....	68	—	15	83
“ Cantonensis (Lusitana).....	4	2	—	8
Iaponica.....	7	—	—	7
<i>Universi</i>	<b>810</b>	<b>206</b>	<b>223</b>	<b>1239</b>
<b>IV.—IN OCEANI INSULIS</b>				
Insul. Philippinarum (Aragoniae).....	94	15	63	172
Iava, Flores, Celebes (Neerlandiae).....	63	6	9	78
Australiae merid. et orient. (Hiberniae).....	69	15	18	102
<i>Universi</i>	<b>226</b>	<b>36</b>	<b>90</b>	<b>352</b>
<b>V.—IN AMERICA SEPTENTR.</b>				
Miss. Indicae (Canadensis).....	18	2	16	34
“ (Missouriana).....	9	—	24	33
In Stat. Foeder., Alaska austr. et bor. (Californiae).....	21	1	10	32
“ “ In Montibus Saxosis (Californiae).....	23	1	23	47
“ “ Color., Nov.-Mex. (Neapolitana).....	57	10	26	93
Honduras Britann. (Missouriana).....	20	4	4	28
Mex. Miss. Tharahumar. (Mexicana).....	10	—	10	20
Antill. Cubana (Castellana).....	48	15	39	102
“ Jamaicensis (Marylandiae-Neo-Eb.).....	21	—	2	23
<i>Universi</i>	<b>225</b>	<b>33</b>	<b>154</b>	<b>412</b>
<b>VI.—IN AMERICA MERIDION.</b>				
Columbiana (Castellana).....	114	40	62	216
Gutanensis Britann. (Angliae).....	22	—	1	23
Brasilicnsis centr. (Romana).....	47	28	35	110
“ merid. (Germaniae).....	114	14	66	194
“ septentr. (Lusitana).....	60	5	42	107
Aequatorialis et Peruviana (Toletana).....	105	2	56	163
Chilo-Argentinensis (Aragoniae).....	170	28	132	330
<i>Universi</i>	<b>632</b>	<b>117</b>	<b>394</b>	<b>1143</b>
<i>Numerantur</i>	<b>2163</b>	<b>429</b>	<b>1027</b>	<b>3639</b>

# Status Societatis Jesu Universae IN MISSIONIBUS EXTERIS INEUNTE ANNO 1914

ASSIST.	PROVINCIAE - MISSIONES	Sac.	Schol.	COAD.	UNIV.
ITALIAE	Roman (Brasil. centr.).....	47	28	35	110
	Neapolitana (Nov. Mex., Color.).....	57	10	28	93
	Sicula (Ins. Aegaeae).....	8	—	8	16
	Veneta (Alban., Mang.).....	71	11	30	112
	<i>Universi</i>	<b>183</b>	<b>49</b>	<b>99</b>	<b>331</b>
GERMANIAE	Belgica (Beng., Gall., Kwang.).....	183	90	46	319
	Galiciiana (Rhod.).....	5	—	7	12
	Germaniae (Bomb., Bras. mer., Dan., Suec.).....	238	38	123	399
	Neerlandiae (Iava, Flores, Celebes).....	63	8	9	78
	<i>Universi</i>	<b>489</b>	<b>134</b>	<b>185</b>	<b>808</b>
GALLIAE	Campaniae (Betsil., Sin. Tcheu-li mer. or., Trincom).....	121	3	30	154
	Franciae (Sin. Nankin.).....	143	15	33	190
	Lugdunensis (Syr., Arm., Aegypt.).....	179	21	89	289
	Tolosana (Madag. etc., Madur.).....	183	77	43	303
	<i>Universi</i>	<b>626</b>	<b>118</b>	<b>194</b>	<b>938</b>
HISPANIAE	Aragoniae (Philip., Chilo-Arg.).....	284	43	195	502
	Castellana (Ant. Cub., Columb.).....	162	55	101	318
	Lusitana (Bras., Goa., Zamb. inf.).....	82	7	51	140
	Mexicana (Tharahumaras).....	10	—	10	20
	Toletana (Aequator., Peruviana).....	105	2	56	163
	<i>Universi</i>	<b>623</b>	<b>107</b>	<b>413</b>	<b>1143</b>
ANGLIAE	Angliae (Guia. Brit., Zamb. sup.).....	78	—	39	115
	Californiae (In Montibus Saxosis, Alaska austr. et bor.).....	44	2	23	79
	Canadensis (Mis. Ind.).....	16	2	16	34
	Hiberniae (Austral. merid. et orient.).....	69	15	18	102
	Marylandiae-Neo-Eb. (Iamaicensis).....	21	—	2	23
	Missouriana (Honduras Britann.).....	29	4	28	61
	<i>Universi</i>	<b>255</b>	<b>23</b>	<b>138</b>	<b>414</b>
	Missio Iaponica.....	7	—	—	7
	<i>Numerantur in Mission. ineunte anno 1914.</i>	<b>2183</b>	<b>429</b>	<b>1027</b>	<b>3839</b>
	“ “ “ “ 1913.*	<b>2159</b>	<b>437</b>	<b>1002</b>	<b>3598</b>
	<i>Augmentum</i>	<b>24</b>	<b>-8</b>	<b>25</b>	<b>41</b>

\* Computationem superioris anni 1913, accuratioribus notitiis acceptis, emendavimus.

**INDEX**  
**ALPHABETICUS SOCIORUM**  
**INEUNTE ANNO 1915**

COGNOMEN ET NOMEN	PAG.	ORTUS	INGRESSUS	GRADUS
<b>A</b>				
<b>COADJUTORES</b>				
Amacker Franc. Xav. ....	19	20 Sept. 1847	13 Sep. 1873	15 Aug. 1885
Arrizabalaga Emmanuel.....	10	20 Apr. 1879	24 Jul. 1897	15 Aug. 1910
<b>B</b>				
<b>SACERDOTES</b>				
P. Baehr Æmilius.....	11	22 Mai. 1872	7 Sep. 1892	2 Feb. 1912
P. Barland Carolus D.....	23	9 Dec. 1872	24 Sep. 1889	15 Aug. 1910
P. Barrachina Josephus.....	34	24 Mar. 1856	6 Mai. 1873	2 Feb. 1893
P. Barry Firminus.....	24	7 Jul. 1868	14 Sep. 1885	2 Feb. 1905
P. Bashnal Ludovicus G.....	26	23 Jul. 1860	27 Jul. 1882	15 Aug. 1902
P. Bellocq Leo M.....	18	26 Jul. 1875	14 Aug. 1894	2 Feb. 1913
P. Bernard Edgar.....	14	9 Mar. 1862	20 Nov. 1878	2 Feb. 1898
P. Biever Albertus.....	18	24 Apr. 1858	12 Dec. 1875	2 Feb. 1897
P. Blatter Alfredus.....	17	6 Mai. 1849	8 Sep. 1873	2 Feb. 1893
P. Bortell Thomas H.....	18	7 Mai. 1877	7 Sep. 1895	2 Feb. 1914
P. Brewer Alfredus J.....	22	18 Nov. 1864	25 Jun. 1884	15 Aug. 1906
P. Brislan Joannes.....	17	10 Nov. 1848	6 Oct. 1866	15 Aug. 1885
P. Brooks Robertus.....	11	12 Sep. 1877	20 Jul. 1894	
P. Brown Andreas J.....	18	30 Aug. 1863	4 Nov. 1882	2 Feb. 1899
P. Buckley Joannes.....	23	1 Mai. 1876	13 Sep. 1896	2 Feb. 1913
P. Butler Theobaldus W.....	14	13 Jul. 1829	23 Sep. 1846	15 Aug. 1869
<b>SCHOLASTICI</b>				
Barranger Paulus.....	12	18 Aug. 1889	21 Mar. 1908	
Bassich Josephus.....	29	2 Jun. 1885	12 Aug. 1902	
Beck Eugenius.....	19	1 Feb. 1888	14 Aug. 1907	
Bryan Daniel H.....	25	24 Feb. 1886	30 Jan. 1902	
Bryant Robertus.....	25	9 Dec. 1891	11 Aug. 1906	
Burk Aloisius.....	28	19 Dec. 1882	14 Mar. 1900	
Burke Martinus.....	29	24 Jan. 1886	20 Apr. 1900	
Burns Gualterus.....	29	2 Mar. 1890	9 Jun. 1908	
Butt Josephus.....	15	31 Aug. 1895	6 Sep. 1913	
<b>COADJUTORES</b>				
Banquells Ignatius.....	35	2 Jan. 1849	10 Mai. 1866	2 Feb. 1879
Banuls Franciscus.....	35	13 Feb. 1857	12 Nov. 1874	15 Aug. 1887
Bellemín Noel.....	15	1 Jul. 1866	18 Feb. 1914	

COGNOMEN ET NOMEN	PAG.	ORTUS	INGRESSUS	GRADUS
Beristain Joachimus.....	35	7 Mar. 1864	20 Jun. 1883	15 Aug. 1894
Bethancourt Ludovicus.....	21	24 Apr. 1881	12 Dec. 1905	
Birmingham Joannes.....	10	2 Feb. 1864	30 Jul. 1896	15 Aug. 1909
Black Ricardus.....	10	29 Nov. 1867	13 Jun. 1884	15 Aug. 1900
Blenke Joannes.....	15	24 Jun. 1883	2 Sep. 1914	
Boeni Aloisius.....	23	18 Feb. 1848	9 Sep. 1872	15 Aug. 1885
Bougnon Franciscus.....	19	15 Mar. 1870	7 Aug. 1890	2 Feb. 1902
Brinkhaus Josephus.....	12	22 Jun. 1859	30 Jul. 1875	15 Aug. 1889
Broderick Jacobus.....	8	8 Sep. 1872	7 Sep. 1892	2 Feb. 1903
Burchardt Robertus.....	15	20 Oct. 1872	13 Sep. 1896	15 Aug. 1908
<b>C</b>				
<b>SACERDOTES</b>				
P. Carey Thomas.....	14	27 Mai. 1882	6 Sep. 1897	
P. Cassiani Ingoni J.....	34	21 Dec. 1872	23 Aug. 1887	2 Feb. 1906
P. Chamard Jacobus.....	11	20 Mar. 1865	22 Sep. 1885	15 Aug. 1903
P. Cronin Daniel.....	24	15 Feb. 1877	30 Aug. 1894	2 Feb. 1914
P. Cronin Joannes.....	26	23 Nov. 1873	7 Sep. 1892	2 Feb. 1913
P. Cronin Michael F.....	22	21 Jan. 1871	2 Dec. 1890	15 Aug. 1905
P. Cronin Michael J.....	29	27 Feb. 1878	30 Jan. 1898	
P. Cronin Patritius.....	20	2 Sep. 1867	6 Sep. 1886	2 Feb. 1905
P. Cronin Patritius S.....	29	12 Feb. 1883	14 Nov. 1898	
P. Cronin Timotheus.....	29	7 Nov. 1881	30 Jan. 1898	
P. Cummings Eduardus A.....	24	9 Jul. 1872	12 Sep. 1891	15 Aug. 1911
<b>SCHOLASTICI</b>				
Campana Michael.....	29	11 Mai. 1891	5 Oct. 1909	
Carbajal Facundus.....	25	27 Nov. 1879	30 Oct. 1904	
Carbajal Josephus B.....	19	21 Feb. 1886	14 Aug. 1903	
Cassidy Eduardus.....	15	3 Aug. 1895	13 Aug. 1913	
Cavey Franciscus.....	29	10 Sep. 1886	10 Sep. 1901	
Chisholm Benedictus.....	29	9 Apr. 1889	4 Jul. 1908	
Clarke Thomas.....	29	1 Oct. 1875	5 Mai. 1902	
Clarkson Felix.....	29	1 Sep. 1879	3 Mai. 1901	
Costello Bartholomaeus P.....	29	7 Dec. 1887	28 Sep. 1906	
Cummings Alfredus.....	19	31 Mai. 1890	27 Sep. 1908	
Cummings Felix.....	19	20 Nov. 1884	29 Dec. 1903	
<b>COADJUTORES</b>				
Castresana Hilarius.....	25	21 Oct. 1860	12 Nov. 1886	3 Feb. 1897
Celli Augustus.....	35	13 Dec. 1848	3 Mai. 1867	2 Feb. 1879
Cohnen Gulielmus.....	25	25 Nov. 1859	22 Oct. 1884	15 Aug. 1896
<b>D</b>				
<b>SACERDOTES</b>				
P. Dane Godfridus.....	18	3 Mar. 1865	28 Jul. 1882	15 Aug. 1913
P. Davis Nicolaus.....	18	27 Jan. 1850	7 Sep. 1870	3 Feb. 1890
P. De Beurme Theophilus.....	9	21 Apr. 1855	12 Dec. 1875	2 Feb. 1894
P. De Potter Jacobus.....	5	12 Jul. 1855	27 Apr. 1875	3 Feb. 1896
P. Devine Henricus A.....	11	20 Apr. 1869	6 Sep. 1886	15 Aug. 1906
P. Diebold Æmilius.....	20	30 Mar. 1874	7 Sep. 1893	2 Feb. 1913
P. Doherty Andreas.....	24	2 Jan. 1876	7 Sep. 1892	15 Aug. 1912
P. Dowling Leo T.....	14	19 Apr. 1873	10 Sep. 1889	15 Aug. 1908

COGNOMEN ET NOMEN	PAG.	ORTUS	INGRESSUS	GRADUS
<b>SCHOLASTICI</b>				
Daly Thomas.....	19	28 Mar. 1888	30 Jul. 1906	
Deignan Joannes.....	29	22 Mai. 1891	15 Oct. 1910	
Donlan Henricus.....	28	23 Oct. 1883	6 Sep. 1903	
Doonan Joannes.....	12	21 Jan. 1888	17 Sep. 1903	
Dorn Leo.....	15	8 Oct. 1897	14 Aug. 1914	
Dougherty Franc. X.....	14	23 Aug. 1888	31 Aug. 1909	
Druhan Joannes.....	15	14 Mar. 1893	22 Sep. 1914	
<b>COADJUTORES</b>				
Del Vecchio Vincentius.....	35	13 Dec. 1868	2 Feb. 1886	2 Feb. 1899
Dougherty Joannes.....	19	1 Jun. 1867	13 Jun. 1884	2 Feb. 1899
<b>E</b>				
<b>SACERDOS</b>				
P. Elfer Paulus Æ.....	20	17 Aug. 1873	1 Oct. 1890	15 Aug. 1913
<b>SCHOLASTICI</b>				
Eaton Josephus.....	14	7 Mai. 1892	24 Sep. 1909	
Entz Franciscus X.....	29	20 Apr. 1883	2 Sep. 1903	
<b>COADJUTORES</b>				
Eaton Franc. X.....	15	5 Dec. 1893	24 Sep. 1909	
Escher Benjaminus.....	25	5 Mai. 1876	1 Jan. 1896	15 Aug. 1906
<b>F</b>				
<b>SACERDOTES</b>				
P. Fazakerley Eduardus I.....	24	9 Mai. 1867	31 Aug. 1885	15 Aug. 1906
P. Fields Augustinus E.....	9	16 Mar. 1870	10 Sep. 1889	15 Aug. 1910
P. Fillinger Gulielmus A.....	23	11 Nov. 1867	13 Sep. 1887	15 Aug. 1908
R. P. FINE EDUARDUS.....	34	28 Mai. 1847	1 Sep. 1865	15 Aug. 1884
P. Finegan Franciscus X.....	18	18 Mai. 1875	13 Aug. 1892	15 Aug. 1911
P. Fleuren Henricus R.....	18	18 Mai. 1873	7 Sep. 1892	2 Feb. 1912
P. Fontan Ambrosius.....	11	23 Jan. 1858	18 Feb. 1874	2 Feb. 1895
P. Foulkes David J.....	9	25 Mai. 1877	13 Sep. 1896	
P. Foulkes Joannes D.....	18	1 Dec. 1867	13 Sep. 1887	15 Aug. 1909
P. Fox Andreas B.....	11	24 Jan. 1866	3 Sep. 1889	15 Aug. 1909
P. Franckhauser Joseph B.....	16	6 Jan. 1866	1 Nov. 1888	15 Aug. 1905
P. Friend Alexander.....	26	7 Mai. 1849	6 Nov. 1872	15 Sep. 1895
<b>SCHOLASTICI</b>				
Fabrizio Antonius.....	15	4 Sep. 1894	13 Aug. 1913	
Farrell Josephus S.....	29	13 Feb. 1877	28 Jul. 1903	
Ferris Gulielmus.....	25	19 Jul. 1883	3 Mar. 1908	
Fitzmorris Edmundus.....	15	10 Oct. 1893	2 Sep. 1911	
Fox Franciscus.....	15	30 Aug. 1895	13 Aug. 1913	
Francis Georgius A.....	25	24 Dec. 1886	27 Sep. 1905	
<b>COADJUTORES</b>				
Fernandez Petrus.....	23	29 Jun. 1864	17 Jun. 1887	2 Feb. 1898
Freret Edmundus.....	28	4 Mai. 1846	15 Apr. 1870	15 Aug. 1882
Fiorentini Aloisius.....	35	4 Apr. 1891	19 Nov. 1908	
<b>G</b>				
<b>SACERDOTES</b>				
P. Gaffney Eduardus.....	9	18 Jul. 1850	24 Oct. 1870	3 Feb. 1890



COGNOMEN ET NOMEN	PAG.	ORTUS	INGRESSUS	GRADUS
P. Gerlach Josephus .....	18	29 Jul. 1842	12 Oct. 1865	15 Aug. 1881
P. Gerste Achilles .....	34	2 Jul. 1854	3 Oct. 1873	15 Aug. 1890
P. Gillow Stanislaus .....	26	24 Dec. 1875	7 Sep. 1892	2 Feb. 1912
P. Grace Michael A. ....	11	4 Feb. 1873	16 Sep. 1889	15 Aug. 1908
P. Gudgeon Joannes J. ....	18	23 Apr. 1864	31 Aug. 1885	15 Aug. 1901
P. Guyot Amadeus .....	9	25 Aug. 1856	30 Jul. 1875	3 Feb. 1896
SCHOLASTICI				
Greely Jacobus .....	29	14 Aug. 1889	8 Apr. 1908	
Gwynn Ludovicus .....	14	9 Oct. 1891	10 Sep. 1911	
COADJUTORES				
Gaillard Franciscus .....	35	18 Nov. 1844	5 Oct. 1876	2 Feb. 1887
Gil Pascal .....	25	4 Jan. 1869	17 Jun. 1887	15 Aug. 1899
Grau Theodorus .....	35	8 Jan. 1866	26 Apr. 1883	2 Feb. 1896
H				
SACERDOTES				
P. Hafner Hermannus .....	34	2 Sep. 1839	23 Nov. 1858	2 Feb. 1874
P. Haggerty Thomas A. ....	11	24 Feb. 1871	25 Oct. 1893	2 Feb. 1913
P. Hanhauser Laurentius .....	17	11 Aug. 1869	25 Feb. 1900	2 Feb. 1913
P. Higgins Michael A. ....	11	21 Jun. 1854	4 Nov. 1882	2 Feb. 1900
P. Hutchinson Daniel .....	18	16 Feb. 1878	4 Feb. 1901	
SCHOLASTICI				
Hayes Georgius .....	15	16 Jan. 1899	14 Aug. 1914	
Hutchins Joannes .....	28	10 Feb. 1887	11 Aug. 1904	
Hynes Joannes G. ....	29	24 Jun. 1886	27 Apr. 1901	
COADJUTORS				
Hellin Salvator .....	21	13 Aug. 1869	16 Sep. 1888	2 Feb. 1901
Hudson Carolus .....	15	23 Nov. 1892	24 Mar. 1913	
I				
COADJUTOR				
Imsand Aloisius .....	12	24 Dec. 1865	16 Feb. 1887	15 Aug. 1898
J				
SACERDOS				
P. Jourdan Gratianus .....	26	10 Apr. 1832	1 Mai. 1855	2 Feb. 1873
SCHOLASTICI				
Johnson Josephus .....	12	27 Jan. 1883	6 Sep. 1906	
Joyce Patritius .....	14	18 Mar. 1876	17 Aug. 1910	

COGNOMEN ET NOMEN	PAG.	ORTUS	INGRESSUS	GRADUS
<b>COADJUTORES</b>				
Jannarelli Philippus.....	35	28 Mai. 1837	22 Nov. 1857	2 Feb. 1868
Jost Franciscus.....	25	26 Sep. 1842	2 Feb. 1861	15 Aug. 1873
<b>K</b>				
<b>SACERDOTES</b>				
P. Kearns Josephus.....	24	17 Jul. 1880	17 Sep. 1897	
P. Kennedy Patritius.....	17	11 Jan. 1857	3 Sep. 1874	2 Feb. 1897
P. Kenny Michael.....	28	28 Jun. 1863	6 Sep. 1886	2 Feb. 1903
P. King Carolus.....	28	8 Jul. 1879	12 Jul. 1898	
P. King Terentius.....	28	9 Apr. 1881	25 Jan. 1899	
P. Klein Carolus.....	20	19 Dec. 1848	1 Aug. 1868	15 Aug. 1890
P. Kleiser Alphonsus.....	34	22 Jul. 1876	30 Sep. 1904	
P. Kofler Joannes E.....	34	13 Dec. 1875	7 Sep. 1896	2 Feb. 1909
P. Kunkel Antonius L.....	20	22 Feb. 1874	12 Jan. 1892	2 Feb. 1913
<b>SCHOLASTICI</b>				
Kearney Gulielmus.....	29	29 Jun. 1889	30 Jul. 1908	
Kelleher Patritius.....	15	10 Jan. 1886	13 Aug. 1911	
<b>COADJUTORES</b>				
Keller Stephanus.....	15	14 Dec. 1859	12 Feb. 1887	15 Aug. 1897
Knauf Mathias.....	35	25 Feb. 1871	1 Oct. 1894	2 Feb. 1905
<b>L</b>				
<b>SACERDOTES</b>				
P. Latiolais Alfredus.....	26	16 Apr. 1869	13 Sep. 1889	15 Aug. 1909
P. Lawton Daniel P.....	28	5 Oct. 1858	3 Sep. 1884	15 Aug. 1901
P. Ledochowski Wlodmirus.....	34	7 Oct. 1866	24 Sep. 1889	25 Mar. 1901
P. Leeuwe Cornelius.....	28	3 Jun. 1878	3 Sep. 1900	
P. Loneragan Jacobus.....	7	15 Aug. 1835	8 Sep. 1854	2 Feb. 1878
P. Lucas Petrus.....	34	11 Mar. 1849	23 Oct. 1876	2 Feb. 1893
<b>SCHOLASTICUS</b>				
Liotta Salvator.....	15	16 Oct. 1895	13 Aug. 1913	
<b>COADJUTORES</b>				
Lezama Damasus.....	12	10 Dec. 1867	14 Jul. 1886	15 Aug. 1898
Locher Wendelinus.....	8	17 Apr. 1853	2 Dec. 1882	15 Aug. 1893
Lo Jacono Josephus.....	35	28 Feb. 1869	24 Mar. 1894	15 Aug. 1904
<b>M</b>				
<b>SACERDOTES</b>				
P. Macdonnell Frideric. I.....	18	25 Jul. 1872	12 Nov. 1891	15 Aug. 1911
P. Macready Renatus A.....	7	11 Aug. 1870	7 Sep. 1886	15 Aug. 1905
P. Madden Thomas D.....	20	15 Sep. 1863	22 Jul. 1885	2 Feb. 1904
P. Maertens Alfredus.....	34	26 Sep. 1838	27 Sep. 1862	2 Feb. 1879
P. Maring Henricus S.....	23	28 Sep. 1862	31 Jul. 1880	3 Feb. 1898

COGNOMEN ET NOMEN	PAG.	ORTUS	INGRESSUS	GRADUS
P. Marnane Partitius .....	23	30 Jul. 1860	4 Nov. 1882	2 Feb. 1899
P. Mattern /Emilius .....	14	2 Oct. 1865	3 Sep. 1884	3 Feb. 1902
P. Maureau Alphonsus L. ....	9	28 Mar. 1869	30 Aug. 1887	2 Feb. 1905
P. Mc Creary Joannes .....	19	4 Feb. 1866	15 Aug. 1885	15 Aug. 1903
P. Mc Donnell Petrus .....	26	9 Oct. 1874	7 Sep. 1892	2 Feb. 1912
P. Mc Kervey Jacobus H. ....	7	4 Oct. 1878	7 Dec. 1894	
P. Mc Laughlin Alexius C. ....	24	29 Nov. 1867	14 Aug. 1884	15 Aug. 1905
P. Mc Laughlin Jacobus J. ....	17	22 Mar. 1862	29 Oct. 1887	15 Aug. 1906
P. Mc Nally Michael .....	26	4 Nov. 1876	30 Aug. 1894	2 Feb. 1913
P. Meriwether Gulielm. A. ....	14	28 Jul. 1834	14 Jan. 1886	15 Aug. 1896
P. Meyer Joannes H. ....	19	27 Jul. 1857	3 Sep. 1884	15 Aug. 1903
P. Molina Pastor .....	29	1 Nov. 1844	11 Feb. 1883	15 Aug. 1893
P. Moore Jacobus P. ....	11	21 Feb. 1854	31 Jul. 1880	2 Feb. 1898
P. Moriniere de la Eman'l. ....	24	17 Apr. 1856	8 Sep. 1873	2 Feb. 1897
R. P. MOYNIHAN MICHAEL .....	5	17 Feb. 1858	14 Aug. 1876	2 Feb. 1897
P. Mullan Elder A. J. ....	34	12 Feb. 1865	4 Aug. 1882	2 Feb. 1907
P. Murphy Daniel J. ....	16	2 Dec. 1852	27 Jul. 1882	2 Feb. 1898
P. Murphy Philippus J. ....	19	2 Dec. 1852	27 Jul. 1882	2 Feb. 1898
SCHOLASTICI				
Maring Carolus .....	29	18 Jun. 1893	20 Jun. 1908	
Mc Auley Joannes .....	29	14 Jun. 1889	24 Oct. 1909	
Mc Carthy Joannes .....	14	24 Nov. 1894	17 Aug. 1910	
Mc Donald Ronaldus .....	29	14 Feb. 1890	30 Jul. 1908	
Mc Grath Thomas .....	25	9 Sep. 1886	20 Sep. 1902	
Mc Hardy Georgius .....	12	30 Mai. 1885	12 Aug. 1902	
Monsabert (de) Andreas .....	25	17 Jul. 1886	14 Dec. 1905	
Morton Arthurus .....	25	26 Sep. 1885	4 Sep. 1906	
Mulherin Gulielmus .....	15	5 Nov. 1893	14 Aug. 1914	
Mulry Aloisius .....	29	6 Feb. 1892	30 Jul. 1908	
Murphy Joannes .....	25	2 Aug. 1885	14 Aug. 1907	
COADJUTORES				
Magrath Georgius .....	25	10 Nov. 1882	29 Jul. 1901	2 Feb. 1913
Mc Carten Eduardus .....	27	5 Jun. 1872	25 Jul. 1889	15 Aug. 1903
Meaza Innocentius .....	12	28 Dec. 1866	19 Dec. 1885	15 Aug. 1897
Melder Fridericus .....	25	14 Nov. 1860	12 Feb. 1887	15 Aug. 1899
Mendizabal Raymondus .....	15	11 Jan. 1880	14 Aug. 1900	15 Aug. 1910
Miller Joannes .....	25	21 Jan. 1876	7 Aug. 1890	15 Aug. 1906
Muller Antonius .....	12	21 Jan. 1845	24 Dec. 1867	2 Feb. 1879
N				
SACERDOTES				
P. Nalbone Franc. de P. ....	34	18 Feb. 1866	30 Oct. 1880	2 Feb. 1902
P. Navin Joannes J. ....	24	15 Aug. 1869	7 Sep. 1887	15 Aug. 1907
P. Nowlan Coemgenus A. ....	24	14 Aug. 1873	6 Sep. 1890	15 Aug. 1911
SCHOLASTICI				
Neale Franciscus .....	15	13 Jul. 1885	14 Aug. 1912	
Needham Daniel .....	15	22 Jun. 1893	14 Aug. 1912	
O				
SACERDOTES				
P. Oberholzer Julius .....	26	18 Jan. 1862	26 Jan. 1891	15 Aug. 1911
P. O'Brien Jacobus .....	20	13 Aug. 1874	7 Sep. 1892	2 Feb. 1912

COGNOMEN ET NOMEN	PAG.	ORTUS	INGRESSUS	GRADUS
P. O'Callaghan Thomas .....	19	1 Feb. 1848	21 Jul. 1874	15 Aug. 1893
P. O'Reilly Josephus .....	19	8 Mai. 1855	3 Sep. 1874	2 Feb. 1895
P. O'Sullivan Daniel P. ....	9	13 Apr. 1859	27 Aug. 1880	2 Feb. 1898
P. O'Sullivan Petrus .....	23	18 Jun. 1874	7 Sep. 1892	15 Aug. 1912
P. Otis Alphonsus E. ....	20	1 Jul. 1864	10 Sep. 1889	15 Aug. 1907
SCHOLASTICI				
Obering Gulielmus .....	28	18 Sep. 1886	29 Nov. 1899	
O'Connor Eugenius .....	25	4 Sep. 1887	1 Mai. 1905	
O'Donohoe Joannes .....	19	12 Aug. 1887	14 Aug. 1907	
O'Loughlin Thomas .....	14	23 Mai. 1893	30 Oct. 1911	
COADJUTOR				
Otten Cornelius .....	12	12 Mar. 1835	14 Aug. 1855	15 Aug. 1869
P				
SACERDOTES				
P. Paris Ludovicus A. ....	10	16 Mai. 1863	3 Sep. 1884	15 Aug. 1900
P. Philippe Petrus J. ....	11	5 Feb. 1869	13 Sep. 1887	15 Aug. 1907
P. Poche Oscar M. ....	13	2 Oct. 1869	9 Oct. 1888	15 Aug. 1907
P. Pont Joachim .....	13	8 Dec. 1843	19 Oct. 1865	15 Aug. 1888
P. Power Gulielmus .....	20	19 Apr. 1855	22 Jul. 1873	2 Feb. 1894
P. Power Joannes .....	19	23 Mar. 1878	20 Oct. 1900	
COADJUTORES				
Peter Ferdinandus .....	5	26 Apr. 1863	10 Apr. 1884	2 Feb. 1895
Pfeiler Joannes .....	15	24 Aug. 1871	8 Oct. 1893	2 Feb. 1904
Prieto Josephus .....	35	28 Nov. 1857	14 Aug. 1880	15 Aug. 1890
Q				
SACERDOS				
P. Quintana Fidelis .....	34	30 Apr. 1867	23 Jun. 1884	2 Feb. 1903
SCHOLASTICUS				
Quirk Carolus .....	29	1 Feb. 1889	22 Aug. 1906	
R				
SACERDOTES				
P. Redmond Patritius .....	10	17 Mar. 1872	7 Sep. 1892	2 Feb. 1912
P. Remy Julius J. B. ....	14	2 Nov. 1865	6 Sep. 1889	15 Aug. 1907
P. Reville Joannes C. ....	14	4 Feb. 1867	3 Sep. 1884	2 Feb. 1905
P. Rittmeyer Georgius A. ....	24	13 Apr. 1859	3 Sep. 1874	2 Feb. 1897
P. Ruhlmann Cyrillus .....	24	2 Jan. 1868	6 Sep. 1889	15 Aug. 1906
P. Ryan Patritius A. ....	20	18 Nov. 1873	12 Sep. 1891	15 Aug. 1911

COGNOMEN ET NOMEN	PAG.	ORTUS	INGRESSUS	GRADUS
<b>SCHOLASTICI</b>				
Ray Samuel.....	14	11 Jan. 1894	15 Aug. 1910	
Ray Theodorus .....	15	22 Jun. 1898	14 Aug. 1914	
Reagan Gulielmus.....	29	4 Oct. 1884	3 Aug. 1900	
Reed Gulielmus .....	29	22 Jul. 1883	5 Aug. 1908	
Rousseau Achilles .....	29	3 Mar. 1878	28 Jul. 1898	
Roy Albertus .....	29	8 Jan. 1889	20 Jun. 1908	
Ryan Jacobus.....	12	30 Sep. 1887	7 Sep. 1903	
Ruggeri Gulielmus .....	29	11 Jun. 1892	7 Sep. 1907	
<b>COADJUTORES</b>				
Rickard Franciscus A.....	25	4 Oct. 1882	11 Oct. 1899	2 Feb. 1914
Rittmeyer Henricus.....	12	5 Mar. 1864	31 Jul. 1880	2 Feb. 1898
<b>S</b>				
<b>SACERDOTES</b>				
P. Salentin Gulielmus.....	17	17 Mar. 1871	7 Aug. 1890	15 Aug. 1910
P. Salter Joannes M.....	7	23 Jun. 1877	12 Sep. 1894	2 Feb. 1913
P. Schuler Linus .....	7	11 Jan. 1864	8 Apr. 1885	15 Aug. 1902
P. Semmes M. Oliverius.....	13	10 Aug. 1868	2 Jul. 1887	15 Aug. 1909
P. Semple Henricus C.....	28	18 Oct. 1853	18 Feb. 1876	2 Feb. 1893
P. Sherry Joannes J.....	20	17 Apr. 1870	3 Oct. 1887	15 Aug. 1907
P. Slevin Thomas .....	19	25 Apr. 1858	6 Sep. 1877	2 Feb. 1897
P. Snebelen Amatus J.....	9	31 Jul. 1865	6 Sep. 1886	15 Aug. 1901
P. Stagg Ludovicus H.....	7	28 Mai. 1865	25 Jan. 1889	15 Aug. 1908
P. Stockalper (de) Alexius.....	26	1 Mar. 1855	9 Sep. 1872	2 Feb. 1891
P. Stritch Joannes H.....	21	25 Dec. 1873	25 Jul. 1889	15 Aug. 1909
P. Stritch Thomas E.....	7	2 Mar. 1870	23 Sep. 1888	15 Aug. 1908
P. Sullivan Florentius.....	28	26 Oct. 1883	12 Jul. 1898	
<b>SCHOLASTICI</b>				
Seidl Clemens.....	29	17 Nov. 1882	25 Aug. 1902	
Shields Franciscus .....	14	4 Aug. 1893	17 Aug. 1910	
St. Paul Georgius .....	15	22 Aug. 1897	13 Aug. 1913	
<b>COADJUTORES</b>				
Schwartz Bernardus.....	12	14 Nov. 1866	8 Mar. 1884	2 Feb. 1899
Sempe Ludovicus.....	19	19 Mar. 1867	12 Mar. 1887	15 Aug. 1899
Sengghen Leo.....	12	18 Jul. 1841	12 Jan. 1877	15 Aug. 1888
Steiner Joannes.....	12	12 Oct. 1853	1 Mar. 1873	15 Aug. 1885
<b>T</b>				
<b>SACERDOTES</b>				
P. Tacchi-Venturi Petrus .....	34	11 Aug. 1861	12 Nov. 1878	2 Feb. 1897
P. Twellmeyer Franciscus X.....	11	21 Jun. 1866	30 Jul. 1885	15 Aug. 1907
P. Tyrrell Gulielmus .....	27	8 Mar. 1854	15 Oct. 1873	2 Feb. 1891

COGNOMEN ET NOMEN	PAG.	ORTUS	INGRESSUS	GRADUS
SCHOLASTICUS				
Toups Laurentius .....	29	1 Dec. 1893	12 Sep. 1909	
V				
SACERDOS				
P. Veau Jacobus.....	11	15 Aug. 1880	11 Dec. 1896	
COADJUTOR				
Visser Franciscus .....	35	17 Dec. 1860	4 Oct. 1880	2 Feb. 1892
W				
SACERDOTES				
P. Wagemans Fridericus.....	24	2 Dec. 1866	7 Sep. 1888	2 Feb. 1905
P. Wagner Albertus.....	19	18 Apr. 1846	19 Aug. 1860	15 Aug. 1879
P. Wallace Jacobus J.....	27	20 Mai. 1879	22 Aug. 1895	2 Feb. 1914
P. Walmesley Hermannus.....	34	9 Feb. 1850	18 Dec. 1867	2 Feb. 1886
P. Walsh Michael.....	7	8 Mai. 1875	7 Sep. 1892	2 Feb. 1912
P. White Laurentius P.....	27	12 Apr. 1871	12 Sep. 1891	15 Aug. 1912
P. Wilkinson Gulielmus.....	24	13 Sep. 1863	6 Sep. 1883	15 Aug. 1902
P. Winkelried Josephus.....	23	9 Aug. 1844	16 Jun. 1865	15 Aug. 1883
P. Wocet Oscar.....	24	16 Apr. 1868	13 Sep. 1887	15 Aug. 1902
SCHOLASTICI				
Wagner Augustinus.....	28	3 Jul. 1888	24 Jul. 1905	
Wales Georgius.....	15	4 Mar. 1889	18 Mar. 1913	
Walsh Josephus.....	25	13 Nov. 1884	20 Jan. 1904	
Watters Michael.....	15	21 Jun. 1891	14 Aug. 1912	
Whipple Aloisius G.....	15	27 Oct. 1892	13 Aug. 1911	
Whipple Georgius A.....	12	27 Mar. 1887	2 Aug. 1903	
White Joannes.....	12	5 Aug. 1885	27 Sep. 1904	
COADJUTORES				
Weidinger Joannes B.....	35	19 Jun. 1890	9 Oct. 1906	
Wenzel Josephus.....	35	26 Aug. 1861	9 Aug. 1883	15 Aug. 1893
Y				
SCHOLASTICI				
Yancey Gulielmus.....	29	27 Mar. 1892	11 Oct. 1909	
Yancey Patritius.....	15	20 Oct. 1896	12 Aug. 1912	
Z				
SACERDOS				
P. Zamesa Isidorus.....	34	4 Apr. 1847	29 Mai. 1864	8 Sep. 1881
COADJUTOR				
Zuber Franciscus.....	19	29 Oct. 1854	1 Mar. 1873	15 Aug. 1885

# Inscriptiones Epistolarum

## AD RR. PP. PROVINCIALES

---

- Angliae*—J. Browne, 114, Mount Street, Grosvenor Square, London, W., England.
- Aragoniae*—R. Lloberola, Lauria, 13, Apartado 143, Barcelona, Spain.
- Austriae*—J. B. Wimmer, Canisiusgasse 16, Wien IX., Austria.
- Belgiae*—Æ. Thibaut, Rue Royale, 165, Bruxelles, Belgium.
- Californiae*—R. A. Gleeson, 3220 43rd St., S. E., Portland, Oregon.
- Campaniae*—L. Poullier, Maison S. Augustin, 7 Rue des Augustins, Enghien, Belgium.
- Canadensis*—J. Carriere, College Ste. Marie, Rue Bleury, Montreal, Canada.
- Castellanae*—P. Bianchi, Colegio de la Merced, Burgos, Spain.
- Franciae*—N. de Boynes, St. Mary's College, Canterbury, England.
- Galicianae*—P. Bapst, Maly Rynek, 8, Cracovie, Galicie, Austria.
- Germaniae*—J. Joye, Exaten bij Baaksem, Limburg, Holland.
- Hiberniae*—T. V. Nolan, St. Francis Xavier's, Upper Gardiner St., Dublin, Ireland.
- Hungariae*—F. X. Speiser, Maria-utca 25, Budapest VIII, Hungary.
- Lugdunensis*—C. Chanteur, St. Stanislaus, St. Leonards-on-Sea, England.
- Lusitanae*—A. Pinto, Pensionnat Sainte-Marie, Alseberg, Belgium.
- Maryl. Neo-Ebor.*—A. J. Maas, 30, W. 16th St., New York City.
- Mexicanae*—M. Renaud, Apartado 104 bis, Mexico, D. F., Mexico.
- Missourianae*—A. J. Burrowes, St. Louis University, St. Louis, Mo.
- Neapolitanae*—A. De Francesco, Via della Cerra, Villa Mellecrinis, Napoli, Italy.

*Neerlandicae*—R. van Oppenraaij, Da Costa-Straat, 44, 's Gravenhage, Holland.

*Neo-Aurelian.*—M. Moynihan, 140 Baronne Street, New Orleans, La.

*Romanae*—A. Spinetti, Via del Seminario, 120, Roma, Italy.

*Siculae*—C. Romano, Piazza Casa Professa, 2, Palermo, Italy.

*Taurinensis*—F. Calcagno, Via Barbaroux, 28, Torino, Italy.

*Toletanae*—J. M. Valera, Isabel la Catolica, 12, Madrid, Spain.

*Tolosanae*—D. Carrere, Calle de S. Pedro, 3, Fuenterrabia, Spain.

*Venetae*—D. Pasi, Fondamenta nuove, 4885, Venezia, Italy.



## Inscriptiones Epistolarum

---

### PROVINCIA NEO-AURELIANENSIS

- Augusta*—College of the S. Heart, 1306 Ellis St., Augusta, Ga.  
*Galveston*—University of St. Mary, 14th and Ave. 1, Galveston, Tex.  
*Grand Coteau*—St. Charles College, Grand Coteau, La.  
*Key West*—Church of St. Mary, Star of the Sea, Key West, Fla.  
*Macon*—St. Stanislaus College, Macon, Ga.  
     St. Joseph's Church, Poplar and New Sts., Macon, Ga.  
*Miami*—Church of the Holy Name, 10th St. and Ave. C, Miami, Fla.  
*Mobile*—St. Joseph's Church, Mobile, Ala.  
*New Orleans*—College of the Immaculate Conception, 140 Baronne St.,  
     New Orleans, La.  
     Loyola University, St. Charles Ave., New Orleans, La.  
*Selma*—Church of the Assumption, Selma, Ala.  
*Shreveport*—St. John's College, Texas Ave., Shreveport, La.  
*Spring Hill*—Spring Hill College, Spring Hill, Mobile Co., Ala.  
*Tampa*—College of the S. Heart, Florida Ave. and Madison St., Tampa, Fla.

### PROVINCIA ANGLIAE

- Accrington*—Church of Sacred Heart, Accrington.  
*Blackpool*—Catholic Church, Talbot Road, Blackpool.  
*Boscombe*—Catholic Church, Boscombe, Bournemouth.  
*Bournemouth*—Catholic Church, Bournemouth.  
*Bristol*—21, Trenchard Street, Bristol.  
*Bury St. Edmunds*—21, Westgate St., Bury St. Edmunds, Suffolk.

- Chesterfield*—Catholic Church, Chesterfield.
- Clitheroe*—Catholic Church, Clitheroe.
- Dalkeith*—Catholic Church, Dalkeith, Scotland.
- Edinburgh*—Sacred Heart, Lauriston Street, Edinburgh.
- Gateshead*—Whinney House, Low Fell, Gateshead.
- Glasgow*—College of St. Aloysius, Garnethill, Glasgow.  
St. Joseph's, North Woodside Road, Glasgow.
- Holywell*—Catholic Church, Holywell, North Wales.
- Isleworth*—Thornbury House, Isleworth.
- Llandrindod Wells*—Catholic Church, Llandrindod, North Wales.
- Liverpool*—8, Salisbury Street, Liverpool.
- Mount St. Mary's*—Mount St. Mary's College, Chesterfield.  
Telegr. "College, Renishaw."
- Leeds*—Church of Sacred Heart, Burley Road, Leeds.  
Catholic College, St. John's Road, Leeds.
- Leigh*—St. Joseph's, Leigh, Lancashire.
- London*—114, Mount Street, London, W.
- Manchester*—The Holy Name, Manchester.
- Oakwood*—Oakwood Hall, Romiley, Cheshire.
- Old Windsor*—Beaumont College, Old Windsor.  
St. John's, Beaumont, Old Windsor.
- Oxford*—St. Aloysius', Oxford.  
Pope's Hall, Oxford.
- Petworth*—Burton Hill, Petworth, Sussex.
- Portico*—Catholic Church, Portico, Prescot, Lancashire.
- Prescot*—Catholic Church, Prescot, Lancashire.
- Preston*—St. Wilfrid's, Preston, Lancashire.  
St. Ignatius', Preston, Lancashire.  
St. Walburge's, Preston, Lancashire.

*Rhyl*—Catholic Church, Rhyl, North Wales.

*Richmond*—Catholic Church, Richmond, Yorkshire.

*Roehampton*—Manresa House, Roehampton, London, S. W.

*St. Asaph*—St. Beuno's College, St. Asaph, North Wales.

*St. Helens*—Lowe House, St. Helens, Lancashire.

Holy Cross Church, St. Helens, Lancashire.

*Skipton*—Catholic Church, Skipton, Yorkshire.

*Stamford Hill*—St. Ignatius' College, Stamford Hill, London, N.

*Stonyhurst*—Stonyhurst College, Blackburn. Telegr. "Stonyhurst."

St. Mary's Hall, Stonyhurst, Blackburn.

Hodder, Stonyhurst, Blackburn.

*Wakefield*—Catholic Church, Wakefield.

*Wardour*—Presbytery, Wardour Castle, near Tisbury, Wiltshire.

*Wigan*—St. John's, Wigan.

*Wimbledon*—Wimbledon College, Wimbledon, London, S. W.

*Worcester*—Catholic Church, Worcester.

*Yarmouth*—Catholic Church, Great Yarmouth.

*Miss. Guian*—The Catholic Cathedral, Georgetown

Telegr. "Hornyold, Demerara."

The Church of the Sacred Heart, Georgetown

Catholic Church, Berbice

" " Buxton

" " Malgretout

" " Morawhanna

" " Morucca

" " Plaisance

" " Suddie

" " Takutu

" " Victoria

} British Guiana.

*Barbados*—Catholic Church, Barbados, West Indies.

*Zambesi*—St. Aidan's College, Grahamstown, Cape Province.

Bulawayo—P. O. Box 28, Bulawayo, Rhodesia.

Chikuni—Pemba Siding, Northern Rhodesia.

Chishawasha—Salisbury, Rhodesia.

Driefontein—Umvuma, Rhodesia.

Dunbrody—Blue Cliff, Cape Province.

Empandeni—Plum-tree, Bulawayo, Rhodesia.

Gokomere—Victoria, Rhodesia.

Gwelo—Catholic Church, Gwelo, Rhodesia.

Hama's—Victoria, Rhodesia.

Salisbury—Catholic Church, Salisbury, Rhodesia.

Umtali—Catholic Church, Umtali, Rhodesia.

#### PROVINCIA CALIFORNIAE

*Akularak*—St. Michael P. O. (for Akularak), Alaska.

*Browning*—St. Michael's Church, Browning, Mont.

*Chewelah*—Catholic Church, Chewelah, Stevens Co., Wash.

*Colville Mission*—St. Francis Mission, Ward P. O., Stevens Co., Wash.

*Cordova*—Catholic Church, Cordova, Alaska.

*Desmet*—Desmet P. O., Idaho.

*Douglas*—Catholic Church, Douglas, Alaska.

*Fairbanks*—Catholic Church, Fairbanks, Alaska.

*Havre*—St. Jude's Church, Havre, Mont.

*Hillyard*—St. Patrick's Church, 542 Grant St., Hillyard, Wash.

*Holy Cross Mission*—Holy Cross Mission, Holy Cross P. O., Alaska.

*Holy Family Mission*—Family P. O., Teton Co., Mont.

*Juneau*—Catholic Church, Juneau, Alaska.

*Ketchikan*—Catholic Church, Ketchikan, Alaska.

*Klamath Falls*—Catholic Church, Klamath Falls, Ore.

- Lakeview*—Catholic Church, Lakeview, Ore.
- Lewiston*—St. Stanislaus' Church, 633 Fifth Ave., Lewiston, Idaho.
- Los Angeles*—Los Angeles College, 225 W. Ave. 52, Los Angeles, Cal.
- Los Gatos*—Sacred Heart Novitiate, Los Gatos, Cal.
- Manresa*—Manresa, R. F. D. 3, Watsonville, Cal.
- Mary's Igloo*—Mary's Igloo, Shelton P. O., via Nome, Alaska.
- Missoula*—St. F. Xavier's Rectory, Missoula, Mont.
- Nez Perces Mission*—Slickpoo P. O., Nez Perce Co., Idaho.
- Nome*—St. Joseph's Church, Steadman Ave., Nome, Alaska.
- Nulato*—Catholic Church, Nulato, Alaska.
- Okinagan Mission*—Mission P. O., Okanogan Co., Wash.
- Pendleton*—St. Mary's Church, 610 Market St., S. E., Portland, Ore.
- Portland*—St. Ignatius' Church, 3220 43d St., S. E. Portland, Ore.  
 St. Michael's Church, 288 Mill St., Portland, Ore.
- Ruby*—Catholic Church, Ruby, Alaska.
- San Francisco*—St. Ignatius University, 2211 Hayes St., San Francisco, Cal.
- San Jose*—St. Joseph's Rectory, San Jose, Cal.  
 St. Mary's Rectory, 556 S. Second St., San Jose, Cal.  
 Holy Family Church, River and San Fernando Sts., San Jose, Cal.  
 Church of the Most Precious Blood, 580 N. Twelfth St., San Jose, Cal.
- Santa Barbara*—Church of Our Lady of Sorrows, 7 E. Figueroa St., Santa Barbara, Cal.
- Santa Clara*—Santa Clara University, Santa Clara, Cal.
- Seattle*—Immaculate Conception Church, 18th and E. Marion Sts., Seattle, Wash.  
 Seattle College, 916 E. Marion St., Seattle, Wash.  
 St. Joseph's Church, 18th and E. Aloha Sts., Seattle Wash.

*Spokane*—Gonzaga University, Spokane, Wash.

St. F. Xavier's Church, N. 3715 Standard St., Spokane, Wash.

*St. Ignatius Mission*—St. Ignatius, Missoula Co., Mont.

*St. Michael*—Catholic Church, St. Michael, Alaska.

*St. Paul's Mission*—St. Paul's P. O., Blaine Co., Mont.

*St. Xavier's Mission*—St. Xavier P. O., Big Horn Co., Mont.

*Skagway*—Catholic Church, Skagway, Alaska.

*Slickpoo*—Slickpoo P. O., Nez Perce Co., Idaho.

*Tacoma*—St. Leo's Rectory, 1324 S. Yakima Ave., Tacoma, Wash.

*Tanana*—St. Aloysius Gonzaga Mission, Tanana, Alaska.

*Umatilla Mission*—St. Andrew's School, R. R. No. 1, Box 30,  
Pendleton, Ore.

*Valdez*—Catholic Church, Valdez, Alaska.

*Yakima*—St. Joseph's Church, North Yakima, Wash.

## PROVINCIA CANADENSIS

*Montreal*—College Ste-Marie, 232, rue Bleury, Montreal.

Loyola College, 68, Drummond Street, Montreal.

College de l'Immaculee-Conception, rue Rachel, Montreal.

*Byng Inlet*—Eglise catholique, Byng Inlet North, Ont.

*Cape Croker*—Catholic Church, Cape Croker, Ont.

*Caughnawaga*—Mission Saint-Francois-Xavier, Caughnawaga, P. Q.

*Edmonton*—College des Jesuites, 2010, 28eme rue, Edmonton, Alta.

*Fort William*—St. Patrick's Rectory, Fort William, Ont.

Mission Bay, Fort William, Ont.

St. Peter's Church, Fort William, Ont.

St. Agnes Church, 1409, Brown St., West Fort William, Ont.

- French River*—Eglise catholique, French River, Ont.
- Garden River*—Eglise catholique, Garden River, Ont.
- Guelph*—St. Stanislaus Novitiate, R. R. No. 5, Guelph, Ont.  
Catholic Rectory, Guelph, Ont.
- Little Current*—Catholic Church, Little Current, Ont.
- Massey*—Eglise catholique, Massey Station, Ont.
- Nepigon*—Catholic Church, Nepigon, Ont.
- Parry Harbor*—Catholic Church, Parry Harbor, Ont.
- Port Arthur*—St. Andrew's Rectory, Port Arthur, Ont.
- Quebec*—24, rue Dauphine, Quebec.  
Manrese, Candiac, pres Quebec.
- Saint-Boniface*—College St-Boniface, Man.
- Sault-au-Recollet*—Maison Saint-Joseph, Sault-au-Recollet, P. Q.
- Sault-Ste-Marie*, Mich. St. Mary's Rectory, Sault-Ste-Marie, Mich, U. S. A.
- Schreiber*—Holy Angel's Rectory, Schreiber, Ont.
- Spanish*—Spanish, Ont.
- Steelton*—Eglise Saint Ignace, Steelton, Ont.
- Sudbury*—College de Sudbury, Sudbury, Ont..  
Eglise Ste-Anne, Sudbury, Ont.
- Waubashene*—Eglise catholique, Waubashene, Ont.
- Wikwemikong*—Holy Cross Mission, Wikwemikong, Ont.
- Winnipeg*—St. Ignatius Rectory, Cor. Stafford and Jessie Sts., Winnipeg, Man.

## PROVINCIA HIBERNIAE

- Dublin*—Belvedere College, Dublin.  
St. Francis Xavier's, Upper Gardiner St., Dublin.  
St. Ignatius, 35-36 Lower Leeson St., Dublin.
- Galway*—St. Ignatius College, Galway.

*Limerick*—College of the S. Heart, Limerick.  
Mungret College, Limerick.

*Milltown*—Milltown Park, Milltown, Co. Dublin

*Rathfarnham*—Rathfarnham Castle, Rathfarnham, Co. Dublin.

*Sallins*—Clongowes Wood College, Sallins, Co. Kildare.

*Tullamore*—St. Stanislaus' College, Tullamore, King's Co.

*North Sydney*—St. Francis Xavier's, Lavender Bay, North  
Sydney.

St. Mary's, Miller St., North Sydney.

*Norwood*—Manresa, Norwood, South Australia.

*Melbourne*—Manresa, Hawthorne, Melbourne.

St. Ignatius', Richmond, Melbourne.

St. Patrick's College, Melbourne.

Xavier College, Kew, Melbourne.

Australia.

*Sevenhill*—St. Aloysius', Sevenhill, South Australia.

*Sydney*—College of St. Ignatius, Riverview, Sydney.

Loyola, Greenwich, Sydney.

St. Aloysius' College, Milson's Point, Sydney.

#### PROVINCIA MARYL-NEO-EBORACENSIS

*Baltimore*—Loyola College, Calvert and Madison Sts., Baltimore, Md.

*Boston*—Boston College, 761 Harrison Ave., Boston, Mass.

St. Mary's Rectory, 45 Cooper St., Boston, Mass.

Holy Trinity, 14 Cobb St., Boston, Mass.

*Bowie*—Church of the Ascension, Bowie, Prince George's Co., Md.

*Brooklyn*—Brooklyn College, 1125 Carroll St., Brooklyn, N. Y.

*Buffalo*—Canisius College, Main and Jefferson Sts., Buffalo, N. Y.

Canisius High School, 651 Washington St., Buffalo, N. Y.

St. Ann's Rectory, 371 Watson St., Buffalo, N. Y.

*Fordham*—Fordham University, Fordham, New York, N. Y.



*Georgetown*—Georgetown College, Washington, D. C.

Holy Trinity Church, 36th and O Sts., N. W., Washington, D. C.

*Jersey City*—St. Peter's College, 144 Grand St., Jersey City, N. Y.

*Leonardtown*—St. Aloysius' Rectory, Leonardtown, St. Mary's Co. Md.

*New York*—College of St. Francis Xavier, 30 West 16th St.,  
New York, N. Y.

Loyola School, 980 Park Ave., New York, N. Y.

Rectory of Our Lady of Loretto, 303 Elizabeth St., New York, N. Y.

Kohlmann Hall, 181st St., New York, N. Y.

*Philadelphia*—St. Joseph's College, 18th and Thompson Sts.,  
Philadelphia, Pa.

St. Joseph's Church, 321 Willing's Alley, Philadelphia, Pa.

*Poughkeepsie*—Novitiate of St. Andrew-on-Hudson, Poughkeepsie, N. Y.

*South Norwalk*—Keyser Island, South Norwalk, Conn.

*St. Inigoes*—St. Inigoes, St. Mary's Co., Md.

*St. Thomas*—St. Thomas Manor, Bel Alton P. O., Charles Co., Md.

*Washington*—Gonzaga College, 19 Eye St., N. W., Washington, D. C.

*Woodstock*—Woodstock College, Woodstock, Md.

*Worcester*—Holy Cross College, Worcester, Mass.

*Brown's Town*—St. Ignatius', Brown's Town P. O.

*Buff Bay*—Buff Bay P. O.

*Kingston*—Winchester Park, Kingston

*Montego, Bay*—Montego Bay

*Spanish Town*—St. Joseph's Church, Spanish Town P. O.

} Jamaica  
West Indies

## PROVINCIA MISSOURIANA

- Belize*—St. John's College, Belize, British Honduras, Cent. Amer.
- Benque Viejo*—Catholic Church, Benque Viejo, Brit. Honduras, Cent. Amer.
- Beulah Isl.*—The Island, Mukwonago P. O., Wis.
- Chicago*—St. Ignatius College, 1076 W. 12th., Chicago, Ill.  
Sacred Heart Residence, 815 West 19th St., Chicago, Ill.  
Loyola Academy, Loyola Ave. and Sheridan Rd., Chicago, Ill.
- Cincinnati*—St. Xavier College, 7th and Sycamore Sts., Cincinnati, O.
- Cleveland*—St. Ignatius College, Carroll Ave. & W. 30th St., Cleveland, O.  
St. Stanislaus', Brooklyn Station, Cleveland, Ohio.
- Corozal*—Catholic Church, Corozal, British Honduras, Cent. America.
- Detroit*—University of Detroit, Jefferson Ave., Detroit, Mich.
- East St. Louis*—St. Francis Regis Residence, 35th St. & Trendley Ave., E. St. Louis, Ill.
- Florissant*—St. Stanislaus Seminary, Florissant, St. Louis Co., Mo.  
St. Ferdinand Residence, Florissant, St. Louis Co., Mo.
- Kansas City*—St. Aloysius Residence, 1107 Prospect Av., Kansas City, Mo.  
St. Francis Xavier Church, 53d St. and Forest Ave., Kansas City, Mo.
- Mankato*—SS. Peter and Paul's Church, Mankato, Min.
- Milwaukee*—Marquette University, 12th St. and Grand Ave., Milwaukee, Wis.
- Nez Perces*—Nez Perces Mission, Slickpoo P. O. Idaho.
- Omaha*—Creighton University, Omaha, Neb.
- Orange Walk*—Catholic Church, Orange Walk, British Honduras, Cent. Amer.
- Pine Ridge Mission*—Holy Rosary Mission, Pine Ridge Agency, South Dakota.

- Prairie du Chien*—Sacred Heart College, Prairie du Chien, Wis.
- Punta Gorda*—Catholic Church, Punta Gorda, British Honduras, Cent. Amer.
- St. Charles*—St. Charles Borromeo Residence, St. Charles, Mo.
- St. Francis Mission*—St. Francis P. O., South Dakota.
- St. Louis*—St. Louis University, Grand Ave. & W. Pine Bl., St. Louis, Mo.  
St. Joseph Residence, 1220 N. 11th St., St. Louis, Mo.  
St. Elizabeth Residence, 2721 Pine St., St. Louis, Mo.
- St. Marys*—St. Mary's College, St. Marys, Kan.
- St. Stephen's Mission*—St. Stephen's P. O., Fremont Co., Wyoming.
- San Esteban*—Catholic Church, San Esteban, Brit. Honduras, Cent. Amer.
- Stann Creek*—Catholic Church, Stann Creek, Brit. Honduras, Cent. Amer.
- Superior*—St. Patrick's Rectory, 2008 Lackawanna Av., Superior, Wis.
- Toledo*—St. John's College, 807 Superior St., Toledo, Ohio.  
St. Mary Residence, 618 Michigan St., Toledo, Ohio.
- Vermilion*—Loyola on the Lake, Vermilion P. O., Erie Co., Ohio.
- Waupaca*—Loyola Villa, Waupaca, Wis.